

## NOTICE OF CRP HAYLAND AVAILABLE FOR HARVEST

The Board of University and School Lands will accept sealed bids for a permit to harvest hay on the following land in Ramsey County:

Township 155 North, Range 60 West – **Minimum Bid \$1736.00**

Section 12: N2 (see attached aerial map for field location)

(185 acres hay more or less)

- Successful bidder will not hay CRP until approval notification is received from Farm Service Agency.
- Haying shall be limited to one cutting, with a minimum 3-inch stubble height remaining after harvest.
- The land may not be used for grazing.
- Haying must be conducted between August 2, 2017 and September 1, 2017.
- All hay must be removed by November 1, 2017.
- The acreage eligible for haying will be identified on an aerial photocopy map.
- All bidders must be livestock producers.
- Successful bidder agrees not to assign, sublease, or sell the hay harvested from CRP acreage.
- Successful bidder must request approval to hay eligible acreage from Ramsey County FSA office before haying can begin.
- Successful bidder is required to sign a certification form at the Ramsey County FSA office.

**Please Note: This CRP contract is expiring. This tract will be offered in October 2017 in Ramsey County at a public auction for hayland/grazing for a 5 year lease term beginning January 1, 2018.**

This is your bid form. Complete it and return to the ND State Land Department, 1707 N 9th Street, PO Box 5523, Bismarck, ND 58506-5523, by **3:00 PM CDT, July 25, 2017**. Please write "**SEALED BID**" on the outside of the envelope. Your payment must be submitted with your bid. The successful bidder will be notified and all other bids will be returned. Bidders must be 18 years or older. The Commissioner reserves the right to reject any and all bids. For more information, call (701) 328-2800. Anyone needing auxiliary aids and services, please call Catelin at (701) 328-2810.

Attached is a map of the approximate area designated for harvest in 2017.

I agree with the above state terms for use of the tract. In addition, I accept liability for injuries and damages to myself and others. The Land Department makes no representation concerning the condition, safety, or usability of the land and any improvements. I will use the land and any improvements on an "as is basis". The Land Department does not covenant that the land and its improvements are fit or safe for the purposes for which I intend to use them. I accept liability and indemnify and hold harmless the Land Department for any loss that may be suffered by the person or property of me, my employees and agents, and anyone else, when such loss is in any way related to my use and management of the land and its improvements.

My bid for the above hay cutting permit is \$\_\_\_\_\_.

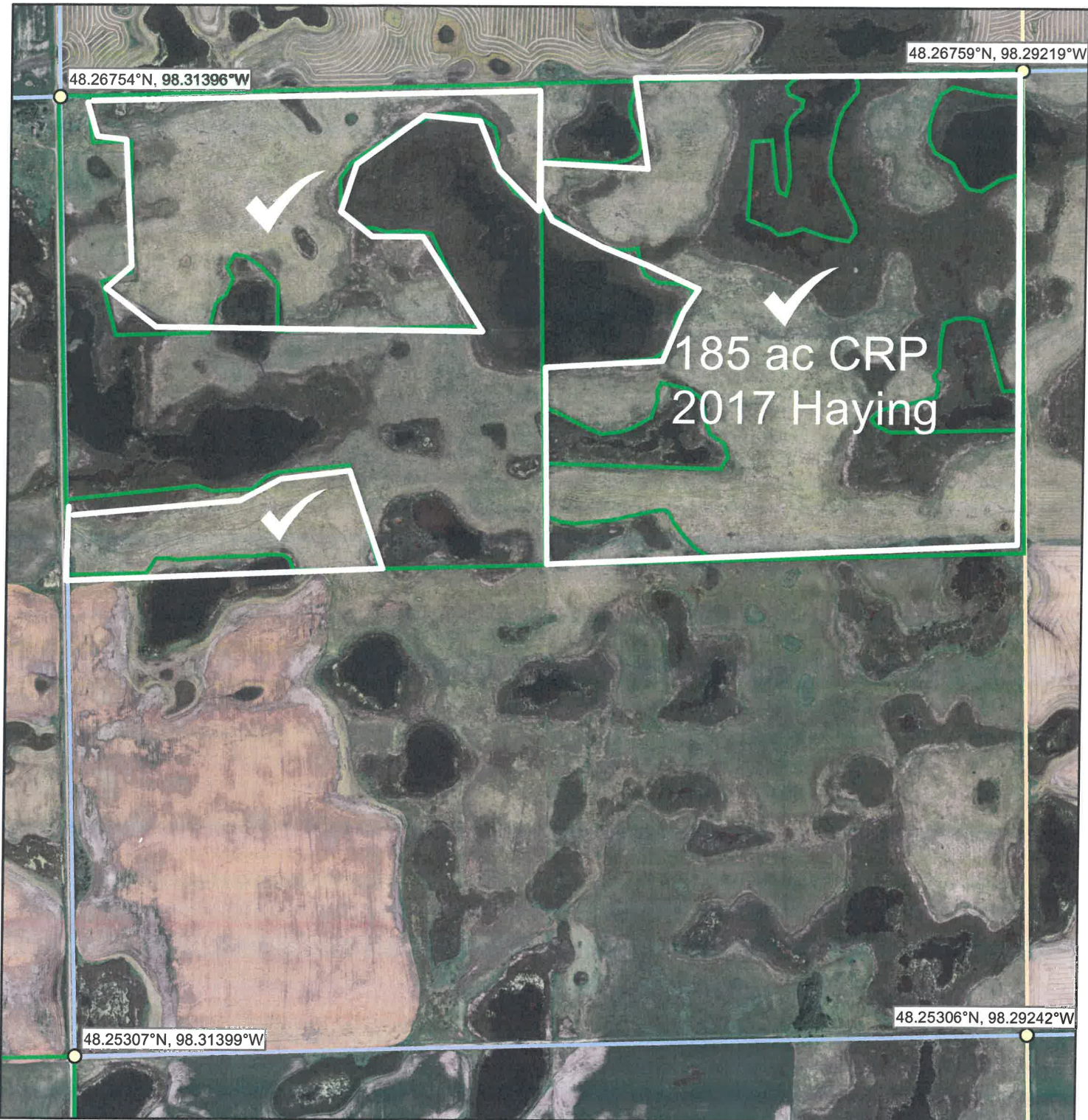
\_\_\_\_\_  
Signature

\_\_\_\_\_  
Date

# 12-T155-R60

Ramsey County

Township: Lillehoff



2017 Managed Haying of CRP

Map Datum is WGS 84 (same as NAD 83)

