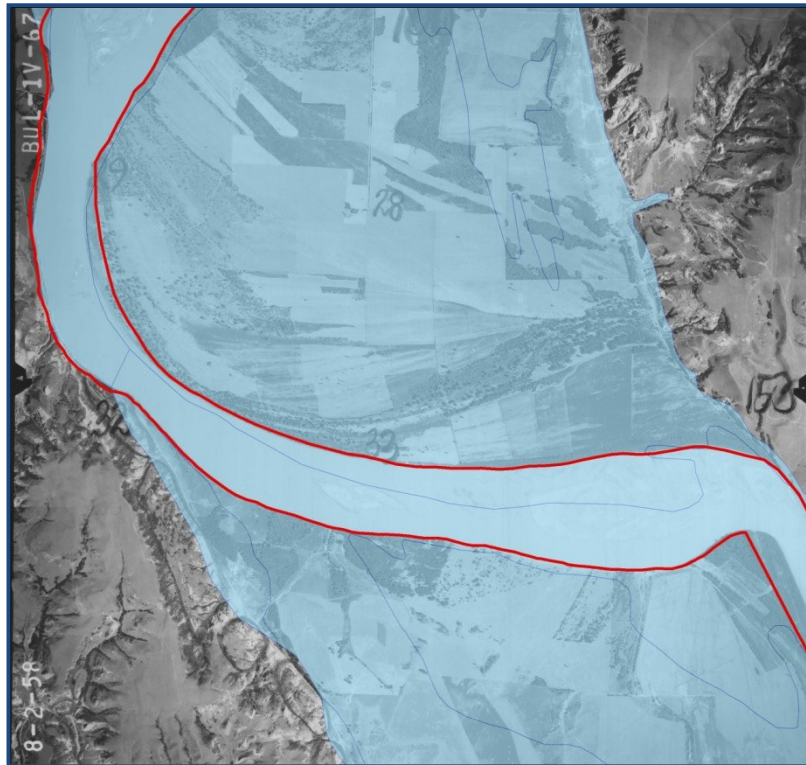


**FINAL**  
**TECHNICAL REPORT**  
**FOR THE**  
**ORDINARY HIGH WATER MARK INVESTIGATION**  
**FOR THE**  
**MISSOURI RIVER UNDER LAKE SAKAKAWEA**  
**(FROM FURLONG LOOP TO NEW TOWN, ND)**  
**MARCH 2011**



*Prepared for:*  
**ND STATE LAND DEPARTMENT**

*Prepared by:*

**BARTLETT** ———  
**& WEST**

**&**

**McCain**  
and Associates. Inc. ☼

## **I. TABLE OF CONTENTS**

**TECHNICAL REPORT  
FOR THE  
ORDINARY HIGH WATER MARK (OHWM) INVESTIGATION  
FOR THE  
HISTORIC MISSOURI RIVER UNDER LAKE SAKAKAWEA  
FOR THE  
NORTH DAKOTA STATE LAND DEPARTMENT**

**MARCH 2011**

- I. TABLE OF CONTENTS
- II. PROJECT DESCRIPTION
- III. BACKGROUND
- IV. METHODOLOGIES
- V. DESCRIPTION OF AREA
- VI. INVESTIGATION FINDINGS
- VII. PROJECT DATA
  - a. Final Acreage Determinations (Included with the Report)
  - b. IDF Table (Included with the Report)
  - c. Data Discs (Located in back cover of Final Report)
  - d. Final Acreage Maps Paper Copy (Separate from Report – One bound set)
  - e. Final Aerial Photo Mosaic Maps (Separate from Report – One bound set)

## II. PROJECT DESCRIPTION

The State of North Dakota acting through the ND State Land Department (SLD) in February 2010 requested and entered into a contract with Bartlett & West, Inc. (BW) for the purpose of identifying the Ordinary High Water Mark (OHWM) for the historic Missouri River under Lake Sakakawea from river mile marker 1574 near the Furlong Loop to river mile marker 1482 at the border of the Fort Berthold Reservation near the city of New Town, North Dakota. BW hired McCain & Associates as the main ecologist and investigators for the Project. This OHWM study was completed utilizing pre-1958 data and materials including historic aerial photography, elevation data, and topography maps. After the OHWM line was established, the final component of the Project was to calculate the acreage below and above the OHWM line for each quarter section in which the river resides within the Project area. The total length of the Project is approximately 92 miles. The investigation and data gathering commenced in March of 2010 and was completed in June of 2010.



Figure 1. Location map depicting the general project area.

### **III. BACKGROUND**

The OHWM is a legal definition of a physical feature found on the landscape. However, the location of their channels can meander, and therefore the OHWM can fluctuate over time. Over a period of years the OHWM can move, sometimes suddenly and abruptly (avulsion), but often times it moves more slowly and subtly (accretion and reliction). This project was completed with the understanding that this was a snapshot of the historic OHWM for the Missouri River as it existed prior to the completion of the Garrison Dam in the 1950's. Since neither the SLD nor the investigation team was aware of any historic OHWM determinations or delineations that would have been recorded prior to the completion of the Garrison Dam, the SLD and the team decided the most viable technique was to determine the OHWM using historic aerial photography, taken prior to the waters of Lake Sakakawea inundating the Missouri River in the Project area.

The OHWM is a transition between the aquatic and terrestrial environments. In some instances this transition occurs in a narrow stretch such as along a steep embankment that was easily identifiable in the photographs. In other cases it was a broad and gradual change, such as on an alluvial plain, which can be difficult to interpret and required more detailed analysis. The work completed under this contract was to investigate and identify the OHWM using historic data, and is not a final legal determination as to whether any specific property is "sovereign land".

As defined in the North Dakota Administrative Code (*NDAC 89-10-01-03*), Ordinary High Water Mark means "that line below which the action of the water is frequent enough either to prevent the growth of vegetation or to restrict its growth to predominantly wetland species. Islands in navigable streams and waters are considered to be below the ordinary high watermark in their entirety." The North Dakota Supreme Court (*State ex rel. Sprynczynatyk v. Mills, 1999 ND 75, ¶ 13, 592 N.W.2d 59*) has further defined "high water mark" as: "[w]hat its language imports - a water mark. It is co-ordinate with the limit of the bed of water, and that only is to be considered the bed which the water occupies sufficiently long and continuously to wrest it from vegetation, and destroy its value for agricultural purposes. In some places, however, where the banks are low and flat, the water does not impress on the soil any well-defined line of demarcation between the bed and the banks. In such cases the effect of the water upon vegetation must be the principal test in determining the location of high water mark as a line between the riparian owner and the public. It is the point up to which the presence of action of the water is so continuous as to destroy the value of the land for agricultural purposes by preventing the growth of vegetation, constituting what may be termed an ordinary agricultural crop." Areas below the OHWM may have vegetation suitable for grazing but wetland vegetation capable of being grazed is not an "ordinary agricultural crop". In 2007, the ND Office of the State Engineer, the North Dakota State office that regulates the state's sovereign lands, published the "*Ordinary High Water Mark Delineation Guidelines*". During this Project the team conducted the OHWM investigation in compliance of these Guidelines, to the extent possible.

#### **IV. METHODOLOGIES**

As noted above, historic aerial photography and extensive OHWM delineation knowledge garnered from previous delineation projects, was used to determine the OHWM as it existed for the Missouri River where the present day Lake Sakakawea resides. In order to maximize the accuracy in determining the location of the OHWM, the team utilized three separate sets of black and white historic aerial photographs. All three of the photographic sets were taken prior to the reservoir, Lake Sakakawea, being completely formed behind Garrison Dam, which construction was essentially completed in 1954. The photographic sets used included a 1943 set that is housed by the US Army Corps of Engineers (COE) in Riverdale, and 1951 and 1958 sets that are housed by the North Dakota Geological Survey (NDGS) in Bismarck. The reservoir took several years after the completion of the dam to fully form, which is why the team was able to utilize the 1958 set for a good portion of the study area. The NDGS photographs were approximately 9-inches square, and the COE photos were 12-inches square. It also seems apparent that all were taken with photographic equipment that was standard during that time.

To make the photographs usable for this study, a flat bed high resolution digital scanner, model Graphtec CS510 was used to digitally scan the images with a resolution of 1200 dots per inch (DPI). After several test runs, the team determined the best combination of settings including resolution and size to produce a high quality product to utilize for the study. A higher resolution could have been used, but the files would have been too large to utilize efficiently, and this would have hindered the team during the investigation. Additional sets of photos from various years were located during the investigation but they were deemed unusable as they were either missing flight paths within the project area or the image quality was deemed too poor to use. According to the photographs, the 1958 set was flown in the month of August, the 1951 set was flown in September, and the 1943 set was flown in May.

The 1943 photos obtained from the COE already had the approximate section lines and corners depicted on them. The COE was not sure when this was done, but likely it was done to assist the COE in determining flood easement acreages. Data from the Bureau of Land Management's (BLM) Public Land Survey System (PLSS) was used to geo-reference these 1943 images according to the Section, Township, and Range. The BLM data is based on Geographic Coordinate Data Base (GCDB) coordinate data. The locations of PLSS corners, as represented in geographic coordinate pairs, were derived from a variety of source documents, which include U.S. General Land Office and BLM survey/notes, as well as survey data obtained from other U.S. Government agencies, private sector survey firms and local governments. The GCDB Data was created to provide the BLM and the public with a set of geographic foundation data that accurately portrays the locations of PLSS corners. The GCDB Data is based on the best and

most current survey records available and uses known geographic positions of control stations within the PLSS network. Section corners from the 1943 photographs were then matched with the corresponding sections of the PLSS data. Once completed, the 1943 photographs were used to geo-reference the 1958 and 1951 NDGS photographs in a similar manner.

The NDGS photographs did not have section lines or corners depicted, so common physical features were identified by the investigation team, which were then used to geo-reference these additional images. While referencing the 1958 and 1951 photographs, a minimum of ten identical features were identified in each photo, between the 1943 and the NDGS photo sets. To assist with this process, the 2009 NAIP aerial imagery was also referenced for confirmation of large permanent structures or cliff faces, which would likely be unchanged during the 50+ year span between the photo sets, to be certain that the referencing was as accurate as possible.

For the investigation, the 1943 and 1958 photos were referenced from the Furlong Loop to the town of New Town. The 1958 set had the highest visual quality and it was the most recent, so it was the primary set used during the investigation. However, for the eastern most stretch of the river in the investigation area, we started to observe definite affects from the backwater of Lake Sakakawea in the 1958 photos. Due to these reasons, the 1951 set was also referenced from this area downstream to the end of the investigation area. The 1951 photos were referenced from Township 154, Range 97, Section 22 & 27 (Near Lund's Landing), to the New Town bridge.

As depicted in Figure 1, the OHWM investigation area begins at river mile 1574 near the Furlong Loop and extends downstream to the Highway 23 Bridge near New Town, between river miles 1481 and 1480. In order to document the investigation process, the team established a minimum of two points per mile for each side of the river (See Figure 2 below), in which an Investigation Documentation Form (IDF) would be processed. This form lists information as to how the OHWM was determined for that location and the location properties. Nearly 500 of these IDF points were completed during this project, and the complete listing of the IDF's are made part of this report. The points were placed at a scale range of 1:1000 at an approximate 2000' - 3000' interval. The points were input at a maximum scale of 1:4000. The IDF includes the Transect label, Comments, Photo Date, Photo File, Topographic File, and Date. The *Transect* label is the name of the point, and the *Comment* contains some information as to why the team placed the point in that location. The *Photo Date* is the year the imagery was flown, and *Photo File* is the name of the specific photo that was used. Finally, *Topo* is the name of the topographic file that was used, and the *Date* is the day the point was placed. The complete IDF listing is made part of this report as an attachment and is also added to the report DVD's, as an electronic spreadsheet file. This format will make it easier for the State to search for any specific IDF.

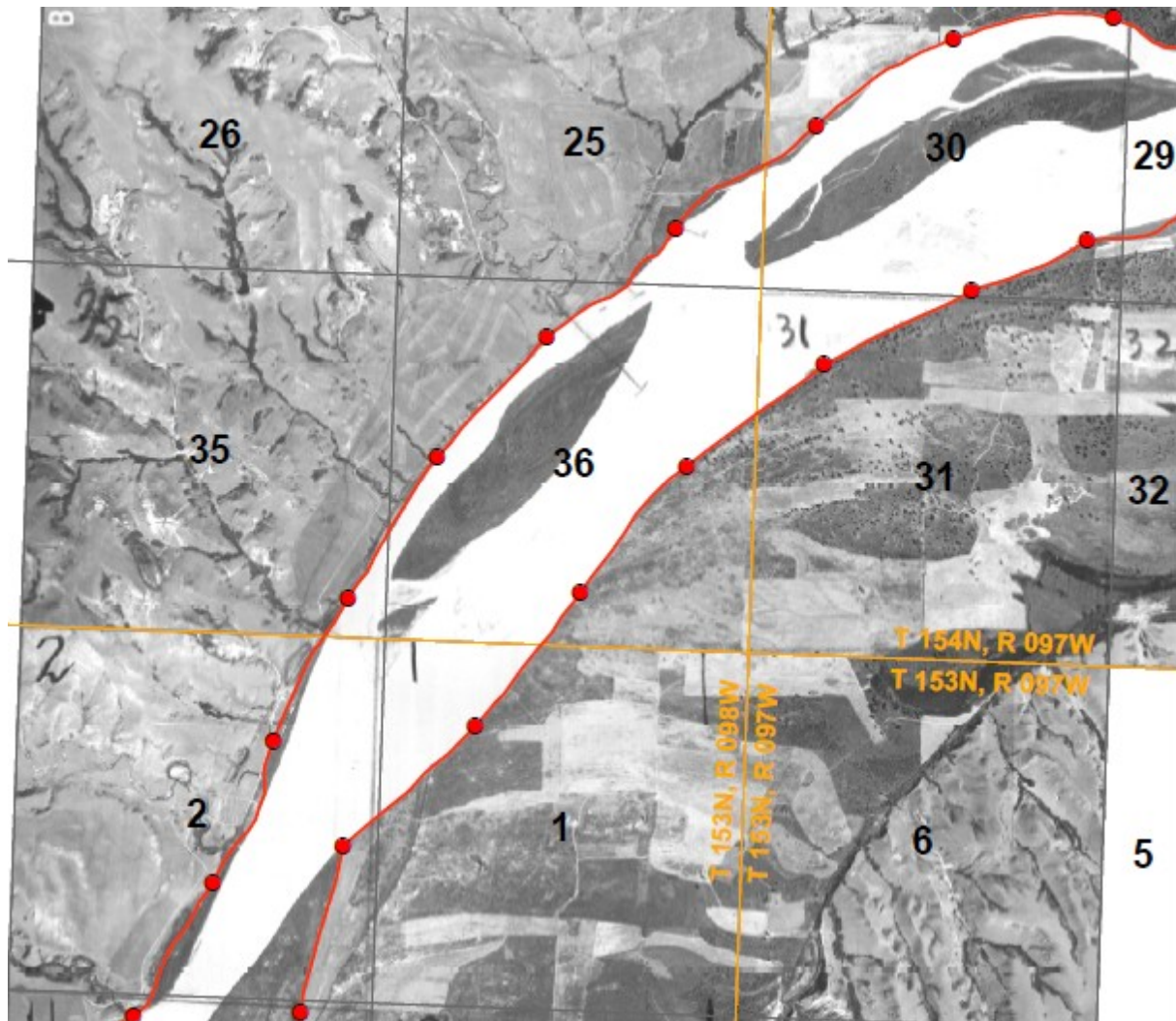


Figure 2. Example of a scanned and rectified aerial photo depicting the IDF locations (red dots) and the OHWM line.

Once the individual points were established, the OHWM line was then determined between the points using the same available information and identified features. This OHWM line was then made part of the overall GIS database. The placement of the line was also influenced by elevation changes in the topography, which was determined using the 1943 topographic maps. The OHWM followed vegetation density changes that appear along the water channels. Areas identified below the OHWM that have greater than 50% wetland vegetation may still have inclusions of upland vegetation or trees.

When the line was finalized internally in April of 2010 it was placed on paper maps so the investigation team and the SLD could make a final review and make any final adjustments. Once this line was finalized in May, the next step involved the acreage determination. To identify the quarter sections, BW downloaded the PLSS data from the BLM website. The layer

was uploaded as quarter-quarters, so one of the first steps involved merging the data into quarter sections. Once this was completed a query was ran to identify the quarter sections that was intersected by the OHWM line. Then a Construct Features tool was used to cut and extract the quarter sections that were located near the OHWM line. After the quarter sections were extracted the Calculate Geometry tool was used to calculate the acreages in each polygon. The final step was to determine if the polygons were above or below the OHWM line, and outputting the data into a spreadsheet so it can be easily referenced and utilized by the SLD.

Finally, in order to review the entire project area efficiently and qualitatively, it was decided to merge the historic aerial photographs into a single file called a photo mosaic. To accomplish this, a small portion of the photographs was extracted out, mostly two to four areas of the photograph that correlated best with the PLSS data. Portions of the photographs where the control points did not correlate well with the photograph were left out of the mosaic. Those extracted portions of the aerial images were then merged together to form the single mosaic. This mosaic should ONLY be used for reference, as the OHWM line depicted on the mosaic may vary slightly from the actual database file and acreage maps. This is due to the fact the actual investigation was completed using individual photos. When creating the mosaic it is nearly impossible to match the edges, and therefore certain edges may be shifted slightly on the mosaic. Due to the large file size, the mosaic was split into five separate sections. Four of them are comprised of the 1958 photo portion and one for the 1951 portion. An index was created and the mosaic was placed onto three DVD's and will be made part of the final report. A paper set of the mosaic maps is also being provided to the SLD.

The months/years depicted on the three sets of photographs used during the investigation displayed a wide range in water flow conditions for the Missouri River. Specifically, according to the USGS records for the Missouri River gaging station at Williston, in 1958 the average flow for the month of August was 14,500 cubic-feet per second (cfs), in 1951 the average flow for the month of September was 35,000 cfs, and in 1943 the average flow for the month of May was 21,000 cfs. According to the same USGS data, the long term average flow for the Missouri River past Williston from 1929 – 1964 was approximately 20,000 cfs. The average high month was the month of June with an average flow from 1929 – 1964 of 47,000 cfs. The average annual peak flow during the summer months over this same time period was 74,000 cfs. As one can see, all three of the flows depicted in the photographs were quite a bit less than the high monthly average of 47,000 cfs or the average peak of 74,000 cfs. This insures that the water surface depicted on the photographic sets that the investigators were analyzing, were from a flow that was considerably less than the ordinary high flows, making the OHWM area completely visible.



## **V. DESCRIPTION OF AREA**

This section of the report defines the conditions and features encountered during the investigation. On a general note, as evidenced in the aerial photographs, the Missouri River meandered through a wide alluvial plain. The river shows significant signs of erosion and deposition. Portions of this alluvial plain has been farmed (either cultivated or hayed) as evidenced by the 1958 aerial photography. Extensive irrigation canals, levees and drains were also constructed throughout the area to aid in the farming practices. One of the more complicated areas to assess included the older oxbow areas. These occur in various levels of development thus including similar vegetation with slight variations in amounts of tree or shrubby growth. The line determination was based on changes in the density of vegetation along older back channels. Whether a determination of the OHWM is made by aerial photographs or by field survey, the vegetative transition from wetland to upland species can be gradual. Vegetation below the OHWM often has inclusions of upland vegetation and vegetation above the OHWM often has inclusions of wetland vegetation. In areas with an apparent gradual transition, where the OHWM was placed in an oxbow area, the OHWM followed a “developmental” line. This OHWM placement was based on vegetation maturity often evidenced by more ‘recent’ water movement through the area.

Another complicated area included the low lying hay fields. For this study, the term “field” refers to hayed or mowed areas, and does not imply that the area has been cultivated or seeded. Farming practices along the river during drier, low water periods often extended into the lower floodplain areas, closer to the water’s edge. These “fields” may be cut for hay, or cultivated for a short time, but rapid colonization of wetland species on these hay fields likely occurred when the wetter period and subsequent higher water levels returned. Levees and drainage ditches are fairly common along these lower floodplains, which were established to protect areas from inundation from the river. These features were mostly established prior to 1943 (shown on 1943 topography maps) and had a large impact in the area along the Missouri River, ultimately disrupting or affecting the local natural hydrology and vegetation patterns.

An easier feature to identify and utilize during the investigation was the cut banks. In these areas the OHWM was easily identified and the line matched very well with the 1943 topography. Many times during the investigation, the team would compare the approximate elevations of the OHWM on the cut bank side, with the deposit side, as another reference check.

## **VI. INVESTIGATION FINDINGS**

The western portion of the OHWM investigation began at the north edge of Section 21, T152N, R103W, near what is referred to as the Furlong Loop. In the 1958 photographs, near River Mile 1574, the river meanders northerly within the alluvial valley for approximately two and half miles before turning back south creating an active oxbow, locally known as Furlong Loop (Sheet 2). Level areas within the alluvial plain are intensively farmed (either cultivated or hayed) as evidenced by the 1958 aerial photography. Upland areas include drained fields and an extensive series of irrigation ditches. The COE had begun construction of a diversion or cut-off channel in the south half of Section 15 by 1958. It was later determined that this channel was likely created to divert water to the east, creating a straighter path so as to limit ice jamming and subsequent overland flooding.

The left bank of the river turns southerly along a cut bank between River Mile 1572 and 1569 (Sheet 2). The majority of the upland area is farmed. An irrigation ditch parallels the main river channel. The right bank of the river is a long depositional peninsula. Old stream channels, especially near the end of the peninsula are readily identifiable by the maturation stages of the vegetation along natural levees to the barren end of the peninsula. Near River Mile 1568 the right bank of the river turns along a high steep bank as the channel narrows and begins to turn back north. Between River Mile 1568 and 1565, the river flows north-northeast in a narrow channel below a steep cut with dissected grasslands above the right bank. Level farmland is on the alluvial plain above the left bank.

The channel widens and turns north-northwesterly near River Mile 1564 (Sheet 3). On the left bank, the OHWM follows the approximate 1948 elevation contour line above a low willow flat. There is a hayed area with a rise in elevation. The OHWM dissects a hayed area along a contour change and then back-floods a low area behind the field before resuming its path downstream (LS15310228L3). An old oxbow northwest of River Mile 1562 had only one small channel near LS15310221L3 connecting it to the river by 1958. The drainage is on the downstream end of the oxbow and appears to flow into the river. Cropland separates the river from the oxbow on the upstream end. This oxbow area became known as Trenton Lake or Trenton Loop.

Well-established roads and major diversion ditches are in place by 1958 (north and east of the oxbow). Sandbar willow flats are above an irrigation ditch, but appear to be present due to upland runoff and a constructed dike holding back water flow from the river (Sheet 3). Vegetation below the dike is low willows with a few scattered trees, most likely peach-leaved willow. Upland areas are cut for hay as evidenced by bales remaining on field in Section 25.

Areas that are hayed have only slight rises in elevations, and the backwater areas are behind the hayed fields and below the road. It appears that the haying practices in this field include areas of exclusion, likely due to wetter soil conditions or willow encroachment.

Along the right bank in Sections 34 and north to Section 27 and 26 (T153N, R102W), the OHWM continues around the edge of an older peninsula. The majority of this peninsula is hayed or farmed. Areas with scattered or developed trees lie along the west edge and in a central area. In the 1943 photographs, the water appeared to flow through east/west across the north edge of Sec 34, 35 and 36. Most of the peninsula was farmed. Fields are more apparent in the 1943 aerial photograph. The tip of the peninsula in Section 22 is barren sandbars, with depositional willow flats along the right bank in Section 26. On the left bank, some areas appear to have been cut and the area is mostly used for hay fields. The areas in Section 26 do not appear to have been tilled near the water's edge. It also appears that someone tried unsuccessfully to cut a portion of the willow flat near a backwater channel.

Continuing on, the river diverts back to north in Section 19, and a large willow flat abuts the main river channel on the left bank (Sheet 3). Various older drainages dissect the prominent drainage giving the appearance of an older island that is below OHWM boundary. Irrigation ditches and field drainage has affected the area and the local hydrology. Fields in the area are hayed, but it does not appear that they were cultivated. The OHWM continues between willow flats and areas with scattered trees and established trails. Fields farther upland are drained into this area. The OHWM follows a slight low area in willow flat at the north end. The right bank in this area is along a steep cut bank at the river's edge.

In the north portion of Section 13, T153N, R102W, and continuing north into Section 12, the left bank of the OHWM follows along a cut bank with fields on the adjacent upland (Sheet 4). Continuing into Sections 1 and 6, the OHWM continues near the bank above a narrow band of willows. The right bank has small channels dissecting a wide willow flat in Section 7, narrowing to a cut bank near the bridge in Section 6. Level cropland areas are on the uplands.

East of the Lewis and Clark Bridge, the river narrows (Sheet 4). The left OHWM continues near the bank with occasional narrow flats between the main channel and the OHWM. Cropland areas are located on the upland area. The 1958 photograph shows the beginning of the levee construction on the left bank near Williston. Drainage channels are apparent on the 1958 photographs, which drain the old oxbow (as shown in the 1943 COE photo.)

The river widens and begins to deviate in Section 33, creating a bend on the left bank with several islands at the turn and a large depositional willow area on the right bank. Uplands are

farmed or hayed. In Section 35, the river begins to turn northeast, creating several sandbars along the right bank and large willow flat on the left bank.

The meandering river creates a large oxbow going into Sections 30 and 31 (Sheet 5). Uplands along the left bank are farmed to the depositional areas in Sections 5 and 6 where striated vegetation indicates the change is more recent. Large willow flats are common along the left bank. The river turns along the steep upper bank in the southeast corner of Section 6 before turning to the south.

The river continues in a southerly direction between River Mile 1542 and 1536 (Sheet 6), meandering from left to right between steep uplands. Areas between the steep banks are cultivated on more mature areas, and include dense willow growth on recent depositions. In Section 5, T152N, R100W, the river turns back east (Sheet 7). At this point, the river channel widens and sandbars become common. Depositional areas with dense willows are dominant on both sides of the river as it turns northerly in Sections 3 and 10.

The Missouri River continues its course north and east, meandering across the wide alluvial plain defined by the steep upland grasslands (Sheets 8-9). Similar depositional and erosion features are present with croplands interspersed along the striated floodplain. The density of the vegetation along the striated plains aided in the placement of the OHWM. Continuous standing water is often apparent in numerous older channels. Hayed fields are occasionally present below the OHWM but generally include several wetland areas and are presumed to be accessible or available to hay only during low water times, and even then will likely contain abundant wetland vegetation.

The Missouri River follows the edge of the alluvial plain in Sections 36, T154, R97W (Sheet 10). Well-vegetated islands are common in the main channel. In Section 25, the river begins to turn easterly, and cropland areas are present between the OHWM and the edge of the alluvial plain. Near LS15409729L1, the OHWM follows an obvious vegetation change back to the primary steep cut of the alluvial plain in Section 20 (Sheet 11). Two-tracks in the area are dry above the OHWM and become darker or wetter below the OHWM, appearing to be only accessed seasonally.

Below the OHWM, marshy areas with standing water and large wetland areas are present in the striated plain. Tobacco Garden Creek enters the Missouri river in Section 15 causing a delta area (Sheet 11). It appears that the area is low grassland and most likely grazed between the two water channels. Two-tracks in this area appear dry and the OHWM was delineated below this area. A field in Section 23 is included within the OHWM. It is presumed the area was created when waters receded. The 1958 photo shows standing water on both sides of the field.

In T154N, R96W, the river flows easterly (Sheet 12). Large wooded areas in Sections 20, 21 and 22 were delineated above the OHWM based on their apparent maturity. In Sections 23 and 24, Beaver Creek enters the Missouri River creating a small delta above the OHWM. In Section 25, the river shifts slightly to the south, creating a large deposit area along the right bank. This area includes some fields and trees, but old channels are apparent. It is presumed that these are only accessed seasonally. Through T154N, R95W, the OHWM is positioned above depositional areas that appear to be uniform low willow stands (Sheet 13). Determinations were made on variations in vegetation, with more mature vegetation identified above the OHWM.

The river turns near the south edge of T154N. A very large sandbar is present at the turn in Sections 34, T154N, R94W and Section 3 T153N, R94W. Mature vegetation is apparent on the sandbar (Sheet 14). On the right bank, the OHWM is above a narrow channel. A much wider channel is present on the left bank. The two channels converge in Section 10 as the river turns easterly.

In 1951, the White Earth River entered the Missouri River at the north edge of Section 2, T153N, R94W (Sheet 14). In 1943, the White Earth entered the Missouri farther downstream and farmland was present between the two rivers (COE 1943 aerial photograph). By 1951, the White Bear River turned and entered the Missouri River farther upstream, causing the farmed land in Section 2 to be inaccessible. In Section 2 and 1, and through Section 8, T153N, R93W, the OHWM follows the left bank of the former White Earth River channel (Sheets 14 and 15). In Section 17 and 20, the right bank of the river follows an old channel above a willow flat before turning against the high cut bank in Section 29 (Sheets 15 and 16). This turn creates a large depositional area on the left bank with various stages of vegetation growth. In this area, the OHWM follows a smaller old flow line, with backwater into Sections 21 and 22 (Sheet 16).

In Section 26, T153N, R93W, the main river channel becomes very narrow as it hits the high cut bank on the left bank and subsequently the river turns and heads south. In Section 10, T152N, R93W, the river turns creating a large depositional area on the right bank. The OHWM was delineated along a change in vegetation structure in Section 11. Based on the quality of the photograph, back channels were not visible. The Little Knife River enters the Missouri River on the east side of the channel in Section 11. From this point, the OHWM follows the cut bank.

The OHWM Phase II investigation was completed at the Highway 23 bridge crossing near the city of New Town.

OBJECTID	Transect	Comment	Photo_Date	Date_	Confidence	Township	Range	Section_	Photo_File	Topo
1	LS15410030L2	Cut bank, shadowing on wall, shading of upland vegetation	Aug. 1958	4/7/2010	Yes	154	100	30	BUL-2V-131	ga015_1943
2	LS15410030L1	Color change in photo, vegetation change near river, '43 topo elevation change	Aug. 1958	4/7/2010	Yes	154	100	30	BUL-2V-131	ga014_1943
3	LS15410030L3	Cut bank, shadowing on wall, vegetation change, old oxbow above OHWL	Aug. 1958	4/7/2010	Yes	154	100	30	BUL-2V-131	ga015_1943
4	LS15410125R1	Mature trees vs. low vegetation, '43 topo lines, clear riverbank	Aug. 1958	4/7/2010	Yes	154	101	25	BUL-2V-130	ga015_1943
5	LS15410136R1	River channel and cut above, Mature vegetation above and water below, willow flat below channel	Aug. 1958	4/7/2010	Yes	154	101	36	BUL-2V-130	ga015_1943
6	LS15410136R2	Mature vegetation along river edge, color change, '43 topo elevation change, on main river channel	Aug. 1958	4/7/2010	Yes	154	101	36	BUL-2V-130	ga015_1943
7	LS15410031L1	Clear change from main channel, mature vegetation, cut bank, old oxbow above OHWL	Aug. 1958	4/7/2010	Yes	154	100	31	BUL-2V-131	ga015_1943
8	LS15410031L2	Long line of mature trees into cut bank, willow flat west of tree line, turning point of high bank, riverbank north of tree line, old oxbow above OHWL	Aug. 1958	4/7/2010	Yes	154	100	31	BUL-2V-131	ga015_1943
9	LS15310006L1	Edge of willow area vs. row of trees below cultivated field, old oxbow above OHWL	Aug. 1958	4/7/2010	Yes	153	100	6	BUL-2V-131	ga015_1943
10	LS15310006L2	Abrupt change in vegetation, old water channel above OHWL with mature trees, willows below OHWL, old oxbow above OHWL	Aug. 1958	4/7/2010	Yes	153	100	6	BUL-2V-84	ga015_1943
11	LS15310005L1	Vegetation change, potentially willows above, follows '43 topo, old oxbow above OHWL	Aug. 1958	4/7/2010	NO	153	100	5	BUL-2V-84	ga015_1943
12	LS15310009L3	Cut bank with willows below, steep hills above, old oxbow above OHWL	Aug. 1958	4/7/2010	Yes	153	100	9	BUL-2V-82	ga019_1943
13	LS15310008L1	Above a smaller channel lined by willows, trees and open above the OHWL, ridge apparent in 2009 aerial imagery and 1943 photo	Aug. 1958	4/7/2010	Yes	153	100	8	BUL-2V-83	ga015_1943
14	LS15310008L2	Above a smaller channel lined be willows, trees and open above the OHWL, ridge apparent in 2009 aerial imagery and 1943 photo	Aug. 1958	4/7/2010	Yes	153	100	8	BUL-2V-83	ga015_1943
15	LS15310009L1	Above a willow flat, below start of larger vegetation	Aug. 1958	4/7/2010	Yes	153	100	9	BUL-2V-83	ga015_1943
16	LS15310009L2	Above a small channel, below a bank, at turn in river to a cut bank, '43 topo shows rise in elevation	Aug. 1958	4/7/2010	Yes	153	100	9	BUL-2V-83	ga019_1943
17	LS15310101R1	Cut bank, vegetation line, scattered trees above.	Aug. 1958	4/7/2010	Yes	153	101	1	BUL-2V-85	ga015_1943
18	LS15310101R2	Above willow flat, below cut bank noted on photo, vegetation line	Aug. 1958	4/7/2010	Yes	153	101	1	BUL-2V-85	ga015_1943
19	LS15310006R1	Above willow flat, below cut bank noted on photo, vegetation line	Aug. 1958	4/7/2010	Yes	153	100	6	BUL-2V-85	ga015_1943
20	LS15310006R2	Above willow flat, below cut bank noted on photo, vegetation line, appears to be upland drain above	Aug. 1958	4/7/2010	Yes	153	100	6	BUL-2V-85	ga015_1943
21	LS15310007R1	Larger, more dense vegetation above OHWL, shorter stature below, apparent small river in 2009 aerials indicating elevation change	Aug. 1958	4/7/2010	Yes	153	100	7	BUL-2V-84	ga015_1943
22	LS15310007R2	Larger, more dense vegetation above OHWL, shorter stature below, apparent small river in 2009 aerials indicating elevation change	Aug. 1958	4/7/2010	Yes	153	100	7	BUL-2V-84	ga015_1943
23	LS15310008R1	Larger, more dense vegetation above OHWL, shorter stature below, longer willow flat	Aug. 1958	4/7/2010	Yes	153	100	8	BUL-2V-84	ga015_1943
24	LS15310008R2	Cut bank at main river channel, evidence of farming or haying, clear riverbank and '43 topo line	Aug. 1958	4/7/2010	Yes	153	100	8	BUL-2V-83	ga015_1943
25	LS15310009R1	Apparent bank and '43 topo line	Aug. 1958	4/9/2010	Yes	153	100	9	BUL-2V-46	ga015_1943
26	LS15310009R2	Turn in peninsula, mature trees vs. barren ground, clear bank	Aug. 1958	4/9/2010	Yes	153	100	9	BUL-2V-46	ga015_1943
27	LS15310016R1	Change in vegetation density, shrubs and open vs. trees, '43 topo shows elevation change	Aug. 1958	4/9/2010	Yes	153	100	16	BUL-2V-46	ga015_1943
28	LS15310016R2	Depositional levee, some trees forming and establishing below OHWL, vegetation more dense and taller above OHWL, color change	Aug. 1958	4/9/2010	Yes	153	100	16	BUL-2V-46	ga015_1943
29	LS15310017R1	Depositional levee, some trees forming and establishing below OHWL but less then at LS15310016R2, vegetation more dense and taller above OHWL, color change	Aug. 1958	4/9/2010	Yes	153	100	17	BUL-2V-46	ga015_1943
30	LS15310020R1	Depositional levee, vegetation more dense and taller above OHWL, color change, below is relatively barren	Aug. 1958	4/9/2010	Yes	153	100	20	BUL-2V-46	ga015_1943
31	LS15310020R2	Vegetation more dense and taller above OHWL, color change, lower structure below	Aug. 1958	4/9/2010	Yes	153	100	20	BUL-2V-46	ga016_1943
32	LS15310019R1	Willow flat below OHWL, dense, more mature vegetation and trees above, at turn in river	Aug. 1958	4/9/2010	Yes	153	100	19	BUL-2V-45	ga016_1943
33	LS15310019R2	Cut bank, '43 topo elevation change	Aug. 1958	4/9/2010	Yes	153	100	19	BUL-2V-45	ga016_1943
34	LS15310016L1	Cut bank, at edge of main channel, vegetation above, water below.	Aug. 1958	4/9/2010	Yes	153	100	16	BUL-2V-47	ga019_1943
35	LS15310016L2	Cut bank, at edge of main channel, vegetation above, water below, two-tracks above OHWL	Aug. 1958	4/9/2010	Yes	153	100	16	BUL-2V-47	ga015_1943
36	LS15310016L3	Cut bank at main channel with wooded vegetation above, '43 topo shows elevation change	Aug. 1958	4/9/2010	Yes	153	100	16	BUL-2V-47	ga015_1943
37	LS15310020L1	Cut bank at main channel with wooded vegetation above, '43 topo shows elevation change, cultivated field and road within ¼ mile	Aug. 1958	4/9/2010	Yes	153	100	20	BUL-2V-47	ga016_1943
38	LS15310020L2	Bank of main river channel, some wooded vegetation above, two-tracks above	Aug. 1958	4/9/2010	Yes	153	100	20	BUL-2V-47	ga016_1943
39	LS15310020L3	Bank of main river channel, some wooded vegetation above, cultivated or hayed field 175ft above.	Aug. 1958	4/9/2010	Yes	153	100	20	BUL-2V-47	ga016_1943
40	LS15310030R1	Cut bank, vertical barren area along main channel, topo shows steep elevation change	Aug. 1958	4/9/2010	Yes	153	100	30	BUL-1V-68	ga016_1943
41	LS15310030R2	Cut bank, vertical barren area along main channel, topo shows steep elevation change	Aug. 1958	4/9/2010	Yes	153	100	30	BUL-1V-68	ga016_1943
42	LS15310029R1	Cut bank, vertical barren area along main channel, topo shows steep elevation change	Aug. 1958	4/9/2010	Yes	153	100	29	BUL-1V-68	ga016_1943
43	LS15310032R1	Cut bank, tree line above OHWL, apparent bank on main channel	Aug. 1958	4/9/2010	Yes	153	100	32	BUL-1V-68	ga016_1943
44	LS15310032R2	Along wooded vegetation adjacent to hay field, along main channel	Aug. 1958	4/9/2010	Yes	153	100	32	BUL-1V-68	ga016_1943
45	LS15310033R1	Along cut bank, along main channel, upland vegetation, trees	Aug. 1958	4/9/2010	Yes	153	100	33	BUL-1V-67	ga016_1943
46	LS15310033R2	Along clear bank on main river channel, cleared field above, river below	Aug. 1958	4/9/2010	Yes	153	100	33	BUL-1V-67	ga020_1943
47	LS15310034R1	Along clear bank on main river channel, cleared field above, river below	Aug. 1958	4/9/2010	Yes	153	100	34	BUL-1V-67	ga020_1943
48	LS15310034R2	North side is cut bank, turn in river, wooded above OHWL, lacking wooded vegetation below OHWL	Aug. 1958	4/9/2010	Yes	153	100	34	BUL-1V-66	ga020_1943
49	LS15310034R3	Wooded vegetation above OHWL, low structure vegetation below,	Aug. 1958	4/9/2010	Yes	153	100	34	BUL-1V-66	ga020_1943
50	LS15210006R1	Farmstead above, main river channel below, end of willow flat to the north	Aug. 1958	4/9/2010	Yes	152	100	6	BUL-1V-44	ga020_1943
51	LS15210005R1	Apparent cut on over bank, wooded dense vegetation above, fields behind trees	Aug. 1958	4/9/2010	Yes	152	100	5	BUL-1V-44	ga020_1943
52	LS15210005R2	Apparent bank along river channel, hay field above, section lines demarcated on 1958 photo are incorrect	Aug. 1958	4/9/2010	Yes	152	100	5	BUL-1V-44	ga020_1943
53	LS15210008R1	Apparent bank along river channel, hay or crop field above,	Aug. 1958	4/9/2010	Yes	152	100	8	BUL-1V-44	ga020_1943
54	LS15210008R2	Apparent bank along river channel, hay or crop field above, begins turn in river	Aug. 1958	4/9/2010	Yes	152	100	8	BUL-1V-44	ga020_1943
55	LS15210009R1	Apparent bank along river channel, wooded area to west and beginning of willow flat to the east, turns away from main channel	Aug. 1958	4/9/2010	Yes	152	100	9	BUL-1V-44	ga020_1943
56	LS15210009R2	Bank above secondary channel, willow flat below, wooded trees above, old oxbow behind	May-43	4/9/2010	Yes	152	100	9	MRD-8-114	ga020_1943
57	LS15210010R1	Apparent bank, behind secondary channel, willow flat below, wooded area above, hay field between and behind LS15210009R2 and LS15210010R1, old oxbow behind	Aug. 1958	4/9/2010	Yes	152	100	10	BUL-1V-47	ga022_1943
58	LS15210010R2	Behind secondary channel, transitional area, less then 50% tree species, apparent vegetation change along older bank, old oxbow behind	Aug. 1958	4/9/2010	No	152	100	10	BUL-1V-47	ga022_1943
59	LS15210003R1	Behind secondary channel, transitional area, less then 50% tree species, apparent vegetation change along older bank, old oxbow behind	Aug. 1958	4/9/2010	No	152	100	3	BUL-1V-47	ga022_1943
60	LS15210002R1	Behind secondary channel, transitional area, less then 50% tree species, apparent vegetation change along older bank, old oxbow behind	Aug. 1958	4/9/2010	No	152	100	2	BUL-1V-47	ga022_1943

OBJECTID	Transect	Comment	Photo_Date	Date_	Confidence	Township	Range	Section_	Photo_File	Topo
61	LS15210002R2	Secondary river channel, apparent bank above, trees behind, islands in front of channel	Aug. 1958	4/9/2010	Yes	152	100	2	BUL-1V-47	ga022_1943
62	LS15310029L1	Transition area between low, shrub and tree vegetation	Aug. 1958	4/9/2010	Yes	153	100	20	BUL-1V-67	ga016_1943
63	LS15310029L2	Transition area between low, shrub and tree vegetation, few trees below, but not 50%	Aug. 1958	4/9/2010	Yes	153	100	29	BUL-1V-67	ga016_1943
64	LS15310029L3	Transition area between low, shrub and tree vegetation, lacking vegetation below	Aug. 1958	4/9/2010	Yes	153	100	29	BUL-1V-67	ga016_1943
65	LS15310032L1	Transition area, area between OHWL and river is narrowing from upstream	Aug. 1958	4/9/2010	Yes	153	100	32	BUL-1V-67	ga016_1943
66	LS15310033L1	Along main river channel, narrow band of vegetation below a cultivated field above OHWL	Aug. 1958	4/9/2010	No	153	100	33	BUL-1V-67	ga016_1943
67	LS15310033L2	Along main river channel, narrow band of vegetation below a cultivated field above OHWL	Aug. 1958	4/9/2010	No	153	100	33	BUL-1V-67	ga016_1943
68	LS15310034L1	Along main river channel with few island forming, vegetation behind, potentially willow shrubs, hayed field 600' from OHWL	Aug. 1958	4/9/2010	No	153	100	34	BUL-1V-66	ga020_1943
69	LS15310034L2	River turns along cut bank, '43 topo shows steep change in elevation	Aug. 1958	4/9/2010	Yes	153	100	34	BUL-1V-66	ga020_1943
70	LS15310034L3	Vegetation transition line, dense above, low stature below	Aug. 1958	4/9/2010	Yes	153	100	34	BUL-1V-66	ga020_1943
71	LS15310035L1	Along main river channel, dense wooded vegetation above	Aug. 1958	4/9/2010	Yes	153	100	35	BUL-1V-66	ga020_1943
72	LS15210005L1	Along main river channel, dense wooded vegetation above, cultivated area within 100'	Aug. 1958	4/9/2010	Yes	152	100	5	BUL-1V-44	ga020_1943
73	LS15210005L2	Along main river channel, upland is dense wooded vegetation	Aug. 1958	4/9/2010	Yes	152	100	5	BUL-1V-44	ga020_1943
74	LS15210004L1	Transition area between shrubs and trees, taller vegetation above, willow flat below	Aug. 1958	4/9/2010	Yes	152	100	4	BUL-1V-44	ga020_1943
75	LS15210004L2	Behind secondary channel, above willow flat, below dense trees	Aug. 1958	4/9/2010	Yes	152	100	4	BUL-1V-44	ga020_1943
76	LS15210004L3	Above secondary channel, dense trees above, islands with low willows	Aug. 1958	4/9/2010	Yes	152	100	4	BUL-1V-47	ga022_1943
77	LS15210003L1	Above secondary channel, dense trees above, islands with low willows	Aug. 1958	4/9/2010	Yes	152	100	3	BUL-1V-47	ga022_1943
78	LS15210003L2	Along main river channel, sandy terrain below, wooded vegetation above	Aug. 1958	4/9/2010	Yes	152	100	3	BUL-1V-47	ga022_1943
79	LS15309931L1	Vegetation line between willow flat and trees, field within 160'	Aug. 1958	4/9/2010	Yes	153	99	31	BUL-1V-62	ga022_1943
80	LS15309931L2	Vegetation line between willow flat and trees	Aug. 1958	4/9/2010	Yes	153	99	31	BUL-1V-62	ga022_1943
81	LS15309932L1	Vegetation line between willow flat and trees	Aug. 1958	4/9/2010	Yes	153	99	32	BUL-1V-62	ga022_1943
82	LS15309932L2	Vegetation line between willow flat and trees	Aug. 1958	4/9/2010	Yes	153	99	32	BUL-1V-62	ga022_1943
83	LS15309933L1	On main channel, dense tree area above, farmed field 800' to the north	Aug. 1958	4/9/2010	Yes	153	99	33	BUL-1V-62	ga022_1943
84	LS15309933L2	On main channel, dense tree area above,	Aug. 1958	4/9/2010	Yes	153	99	33	BUL-1V-61	ga022_1943
85	LS15309933L3	On main river channel, vegetation above, farmed field 250' to the north	Aug. 1958	4/9/2010	Yes	153	99	33	BUL-1V-61	ga025_1943
86	LS15309934L1	On main river channel, vegetation on old clearing above, farmed field 320' to the north	Aug. 1958	4/9/2010	Yes	153	99	34	BUL-1V-61	ga025_1943
87	LS15309934L2	On main river channel and on an old channel, vegetation established, some upland areas are cultivated, beginning of old oxbow	Aug. 1958	4/9/2010	No	153	99	34	BUL-1V-59	ga025_1943
88	LS15309935L1	A bank above willow flat, upland vegetated with scattered trees and fields, beginning of old oxbow	Aug. 1958	4/9/2010	No	153	99	35	BUL-1V-59	ga025_1943
89	LS15309935L2	A bank above willow flat, upland vegetated with scattered trees and fields, beginning of old oxbow	Aug. 1958	4/9/2010	No	153	99	35	BUL-1V-59	ga025_1943
90	LS15309935L3	Entrance to oxbow, trees above OHWL, barren below with some low willows	Aug. 1958	4/9/2010	No	153	99	35	BUL-1V-59	ga025_1943
91	LS15309936L1	Trees above OHWL, barren below	Aug. 1958	4/9/2010	No	153	99	36	BUL-1V-59	ga025_1943
92	LS15309932R1	On main river channel, fields above, narrow band of dense vegetation with trees	Aug. 1958	4/9/2010	Yes	153	99	32	BUL-1V-62	ga022_1943
93	LS15309932R2	Near main river channel, dense vegetation between fields upland, two-track above	Aug. 1958	4/9/2010	No	153	99	32	BUL-1V-62	ga022_1943
94	LS15309932R3	Appears to be willow flats, barren areas, and hayed grass areas below; two-track on tilled fields above. old river channel area	Aug. 1958	4/9/2010	No	153	99	32	BUL-1V-61	ga022_1943
95	LS15309933R1	Appears to be willow flats, barren areas, and hayed grass areas below; two-track on tilled fields above. old river channel area	Aug. 1958	4/9/2010	No	153	99	33	BUL-1V-61	ga022_1943
96	LS15210001R1	Appears to be willow flats, barren areas, and hayed grass areas below; two-track on tilled fields above. old river channel area	Aug. 1958	4/9/2010	No	152	100	1	BUL-1V-49	ga025_1943
97	LS15209906R1	Cut bank of old river channel, willows and hayed grass below, Topo shows steep elevation change	Aug. 1958	4/9/2010	No	152	99	6	BUL-1V-49	ga025_1943
98	LS15209906R2	Cut bank of old river channel, willows and hayed grass below, Topo shows steep elevation change	Aug. 1958	4/9/2010	No	152	99	6	BUL-1V-49	ga025_1943
99	LS15209905R1	Cut bank of old river channel, willow below, topo shows steep elevation change	Aug. 1958	4/9/2010	Yes	152	99	5	BUL-1V-58	ga025_1943
100	LS15209905R2	Cut bank of main river channel, no vegetation below, topo shows steel elevation change	Aug. 1958	4/9/2010	Yes	152	99	5	BUL-1V-58	ga025_1943
101	LS15309935R1	Cut bank of main river channel, no vegetation below, trees above, topo shows steel elevation change	Aug. 1958	4/9/2010	Yes	153	99	35	BUL-1V-58	ga025_1943
102	LS15410131L1	Main river channel, construction behind, follows the line area where vegetation has not been disturbed	Aug. 1958	4/12/2010	Yes	154	101	31	BUL-2V-90	ga007_1943
103	LS15410132L1	On secondary channel behind willow sandbar, higher denser vegetation above	Aug. 1958	4/12/2010	Yes	154	101	32	BUL-2V-127	ga007_1943
104	LS15410132L2	On main river channel, above there are trees and shrubs for 300' and the rest fields	Aug. 1958	4/12/2010	Yes	154	101	32	BUL-2V-127	ga007_1943
105	LS15410132L3	On main river channel, narrow band of trees and fields behind, '43 COE photos show old river bed to the north	Aug. 1958	4/12/2010	Yes	154	101	32	BUL-2V-127	ga007_1943
106	LS15410133L1	Behind willow flat, below field, '43 COE photos show old river bed to the north	Aug. 1958	4/12/2010	Yes	154	101	33	BUL-2V-127	ga007_1943
107	LS15410133L2	Main river channel, upland is old field with two-track adjacent to river, '43 COE photos show old river bed to the north	Aug. 1958	4/12/2010	Yes	154	101	33	BUL-2V-127	ga007_1943
108	LS15410134L1	On main river channel behind sandbar. upland is field and two-track, '43 COE photos show old river bed to the north	Aug. 1958	4/12/2010	Yes	154	101	34	BUL-2V-128	ga011_1943
109	LS15410134L2	Main river channel, upland is old field with two-track adjacent to river, '43 COE photos show old river bed to the north	Aug. 1958	4/12/2010	Yes	154	101	34	BUL-2V-128	ga011_1943
110	LS15410134L3	Behind willow sandbar, field upland, '43 COE photos show old river bed to the north	Aug. 1958	4/12/2010	Yes	154	101	34	BUL-2V-128	ga011_1943
111	LS15410135L1	Above willow flat, upland is old river bed with trees, trees following old levees and expanding out, '43 COE photos show old river bed to the north	Aug. 1958	4/12/2010	Yes	154	101	35	BUL-2V-130	ga011_1943
112	LS15410135L2	Above willow flat, fields above with scattered trees, '43 COE photos show old river bed to the north	Aug. 1958	4/12/2010	Yes	154	101	35	BUL-2V-130	ga011_1943
113	LS15410135L3	Above willow flat, fields above with scattered trees, '43 COE photos show old river bed to the north	Aug. 1958	4/12/2010	No	154	101	35	BUL-2V-130	ga011_1943
114	LS15410125L1	Above willow flat, upland is corner of cleared field, drainage fields above levee construction, '43 COE photos show old river bed to the north	Aug. 1958	4/12/2010	No	154	101	25	BUL-2V-130	ga011_1943
115	LS15410125L2	Above willow flat, upland vegetation modified, drainage fields above levee construction	Aug. 1958	4/12/2010	No	154	101	25	BUL-2V-130	ga015_1943
116	LS15410125L3	Above willow flat, upland vegetation modified, drainage fields above levee construction	Aug. 1958	4/12/2010	No	154	101	25	BUL-2V-130	ga015_1943
117	LS15310106R3	On main river channel, wooded area with mature trees above, near bridge, old river channel behind	Aug. 1958	4/12/2010	Yes	153	101	6	BUL-2V-127	ga007_1943
118	LS15410132R1	Along tree line, vegetation more dense above and high stature, old river channel behind	Aug. 1958	4/12/2010	Yes	154	101	32	BUL-2V-127	ga007_1943
119	LS15410132R2	Along tree line, vegetation more dense above and high stature, old river channel behind	Aug. 1958	4/12/2010	Yes	154	101	32	BUL-2V-127	ga007_1943
120	LS15410133R1	Along tree line, vegetation more dense above and high stature, old river channel behind	Aug. 1958	4/12/2010	Yes	154	101	33	BUL-2V-127	ga007_1943

OBJECTID	Transect	Comment	Photo_Date	Date_	Confidence	Township	Range	Section_	Photo_File	Topo
121	LS15310104R1	Along tree line, vegetation more dense above and high stature, old river channel behind	Aug. 1958	4/12/2010	Yes	153	101	4	BUL-2V-127	ga011_1943
122	LS15310103R1	Along tree line, vegetation more dense above and high stature, old river channel behind	Aug. 1958	4/12/2010	Yes	153	101	3	BUL-2V-128	ga011_1943
123	LS15310103R2	Along tree line, vegetation more dense above and high stature, old river channel behind, homestead adjacent, some standing water below	Aug. 1958	4/12/2010	Yes	153	101	3	BUL-2V-128	ga011_1943
124	LS15310103R3	Along back channel, below hayed field	Aug. 1958	4/12/2010	Yes	153	101	3	BUL-2V-128	ga011_1943
125	LS15310102R1	Behind old channel with willow flat, below field	Aug. 1958	4/12/2010	Yes	153	101	2	BUL-2V-130	ga011_1943
126	LS15310102R2	Behind old channel with willow flat, below field	Aug. 1958	4/12/2010	Yes	153	101	2	BUL-2V-130	ga011_1943
127	LS15410136R1	Cut bank along main river channel, upland is wooded and fields	Aug. 1958	4/12/2010	Yes	154	101	36	BUL-2V-130	ga011_1943
128	LS15410136R2	Along wooded tree line, narrow willow flat below,	Aug. 1958	4/12/2010	Yes	154	101	36	BUL-2V-130	ga015_1943
129	LS15410136R3	Along main river channel cut bank	Aug. 1958	4/12/2010	Yes	154	101	36	BUL-2V-130	ga015_1943
130	LS15309936R1	Cut on main river channel, wooded vegetation upland, may include some wetland vegetation from runoff	Aug. 1958	4/12/2010	Yes	153	99	36	BUL-1V-58	ga025_1943
131	LS15309936R2	Cut on main river channel, wooded vegetation upland, may include some wetland vegetation from runoff	Aug. 1958	4/12/2010	Yes	153	99	36	BUL-1V-57	ga027_1943
132	LS15309831R1	Above willow flat with more wooded species above	Aug. 1958	4/12/2010	Yes	153	98	31	BUL-1V-57	ga027_1943
133	LS15309831R2	Above wetland area in sandbar flat, trees above	Aug. 1958	4/12/2010	Yes	153	98	31	BUL-1V-57	ga027_1943
134	LS15309832R1	Above wetland area in sandbar flat, trees above	Aug. 1958	4/12/2010	Yes	153	98	32	BUL-1V-57	ga027_1943
135	LS15309832R2	Above channel area in sandbar flat, trees above	Aug. 1958	4/12/2010	Yes	153	98	32	BUL-1V-57	ga027_1943
136	LS15309832R3	Above secondary channel and willow flat, below field	Aug. 1958	4/12/2010	Yes	153	98	32	BUL-1V-56	ga027_1943
137	LS15309833R1	Above secondary channel and willow flat, below wooded area and field	Aug. 1958	4/12/2010	Yes	153	98	33	BUL-1V-56	ga027_1943
138	LS15309828R1	On main channel, upland is wooded areas between fields	Aug. 1958	4/12/2010	Yes	153	98	28	BUL-1V-55	ga027_1943
139	LS15309833R2	Old river bed area, primarily low & clumped willows, some trees but not many, fields are within area but have obvious drains, adjacent uplands steep & have significant runoff drainages influencing the area	Aug. 1958	4/12/2010	No	153	98	33	BUL-1V-54	ga030_1943
140	LS15309834R1	Old river bed area, primarily low & clumped willows, some trees but not many, fields are within area but have obvious drains, adjacent uplands steep & have significant runoff drainages influencing the area	Aug. 1958	4/12/2010	No	153	98	34	BUL-1V-54	ga030_1943
141	LS15309834R2	Old river bed area, primarily low & clumped willows, some trees but not many, fields are within area but have obvious drains, adjacent uplands steep & have significant runoff drainages influencing the area	Aug. 1958	4/12/2010	No	153	98	34	BUL-1V-54	ga030_1943
142	LS15309834R3	Old river bed area, primarily low & clumped willows, some trees but not many, fields are within area but have obvious drains, adjacent uplands steep & have significant runoff drainages influencing the area	Aug. 1958	4/12/2010	No	153	98	34	BUL-1V-54	ga030_1943
143	LS15309826R1	Old river bed area, primarily low & clumped willows, some trees but not many, fields are within area but have obvious drains, adjacent uplands steep & have significant runoff drainages influencing the area	Aug. 1958	4/12/2010	No	153	98	26	BUL-1V-54	ga030_1943
144	LS15309826R2	Old river bed area, primarily low & clumped willows, some trees but not many, fields are within area but have obvious drains, adjacent uplands steep & have significant runoff drainages influencing the area	Aug. 1958	4/12/2010	No	153	98	26	BUL-1V-54	ga030_1943
145	LS15309826R3	Old river bed area, primarily low & clumped willows, some trees but not many, fields are within area but have obvious drains, adjacent uplands steep & have significant runoff drainages influencing the area	Aug. 1958	4/12/2010	No	153	98	26	BUL-1V-54	ga030_1943
146	LS15309823R1	Old river bed area, primarily low & clumped willows, some trees but not many, fields are within area but have obvious drains, adjacent uplands steep & have significant runoff drainages influencing the area	Aug. 1958	4/12/2010	No	153	98	23	BUL-1V-53	ga030_1943
147	LS15309926L1	River is turning and creating an oxbow, OHWL is drawn at waters edge, vegetation is low with some trees, wet areas and fields apparent above OHWL,	Aug. 1958	4/12/2010	No	153	99	26	BUL-1V-59	ga025_1943
148	LS15309926L2	River is turning and creating an oxbow, OHWL is drawn at waters edge, vegetation is low with some trees, wet areas and fields apparent above OHWL,	Aug. 1958	4/12/2010	No	153	99	26	BUL-1V-59	ga025_1943
149	LS15309926L3	River is turning and creating an oxbow, OHWL is drawn at waters edge, vegetation is low with some trees, wet areas and fields apparent above OHWL,	Aug. 1958	4/12/2010	No	153	99	26	BUL-1V-59	ga025_1943
150	LS15309923L1	Cut bank with steep elevations above	Aug. 1958	4/12/2010	No	153	99	23	BUL-1V-59	ga025_1943
151	LS15309923L2	Cut bank with steep elevations above	Aug. 1958	4/12/2010	No	153	99	23	BUL-1V-59	ga025_1943
152	LS15309924L1	Cut bank with steep elevations above	Aug. 1958	4/12/2010	No	153	99	24	BUL-1V-59	ga025_1943
167	LS15309813L2	Willows below most likely sandbar with diamond, scattered trees above in linear formations	Aug. 1958	4/19/2010	No	153	98	13	BUL-2V-61	ga029_1943
168	LS15309814L1	Willows below most likely sandbar with diamond, scattered trees above in linear formations and a hayed area	Aug. 1958	4/19/2010	No	153	98	14	BUL-2V-61	ga029_1943
169	LS15309811L1	Along secondary channel, willow flat area, old river bed above	Aug. 1958	4/19/2010	No	153	98	11	BUL-2V-61	ga029_1943
170	LS15309811L2	Cut bank, elevation changes above, along main river channel	Aug. 1958	4/19/2010	Yes	153	98	11	BUL-2V-68	ga029_1943
171	LS15309811L3	Cut bank, elevation changes above, along main river channel	Aug. 1958	4/19/2010	Yes	153	98	11	BUL-2V-68	ga029_1943
172	LS15309802L1	Sandbar flat below, steep bank and road above	Aug. 1958	4/19/2010	Yes	153	98	2	BUL-2V-68	ga029_1943
173	LS15309802L2	In a willow flat, channel above as assumed to be from overland flow, cultivated fields above	Aug. 1958	4/19/2010	Yes	153	98	2	BUL-2V-68	ga029_1943
174	LS15409835L1	On main river channel. consistent with topo change, steep elevation change	Aug. 1958	4/19/2010	Yes	154	98	35	BUL-2V-68	ga029_1943
175	LS15409836L1	On main river channel. consistent with topo change, steep elevation change	Aug. 1958	4/19/2010	Yes	154	98	36	BUL-2V-68	ga029_1943
176	LS15409836L2	On main river channel. consistent with topo change, steep elevation change	Aug. 1958	4/19/2010	Yes	154	98	36	BUL-2V-149	ga029_1943
177	LS15409825L1	Above channel, behind willow sandbar, some fields above, topo shows elevation change	Aug. 1958	4/19/2010	Yes	154	98	25	BUL-2V-149	ga029_1943
178	LS15409730L1	Above willows and below field	Aug. 1958	4/19/2010	Yes	154	97	30	BUL-2V-149	ga032_1943
179	LS15409730L2	On main river channel. below field	Aug. 1958	4/19/2010	Yes	154	97	30	BUL-2V-149	ga031_1943
180	LS15409730L3	On main river channel, below tree growth, old river bed above	Aug. 1958	4/19/2010	No	154	97	30	BUL-2V-149	ga031_1943
181	LS15309824R1	On main river channel, below an older depositional area	Aug. 1958	4/19/2010	Yes	153	98	24	BUL-2V-61	ga030_1943
182	LS15309824R2	On main river channel, at steep bank above	Aug. 1958	4/19/2010	Yes	153	98	24	BUL-2V-61	ga030_1943
183	LS15309813R1	On main river channel, at steep bank above	Aug. 1958	4/19/2010	Yes	153	98	13	BUL-2V-61	ga029_1943
184	LS15309813R2	On main river channel, at steep bank above	Aug. 1958	4/19/2010	Yes	153	98	13	BUL-2V-61	ga029_1943
185	LS15309813R3	On main river channel, old river channel above with two-tracks through the area	Aug. 1958	4/19/2010	Yes	153	98	13	BUL-2V-61	ga029_1943
186	LS15309812R1	On main river channel, old river channel above with two-tracks and fields through the area	Aug. 1958	4/19/2010	Yes	153	98	12	BUL-2V-68	ga029_1943
187	LS15309811R1	Above willow flat, remnant back channel	Aug. 1958	4/19/2010	Yes	153	98	11	BUL-2V-68	ga029_1943
188	LS15309811R2	Above willow flat, remnant back channel	Aug. 1958	4/19/2010	Yes	153	98	11	BUL-2V-68	ga029_1943
189	LS15309802R1	On bank with field above	Aug. 1958	4/19/2010	Yes	153	98	2	BUL-2V-68	ga029_1943
190	LS15309801R1	Cut bank, fields above	Aug. 1958	4/19/2010	Yes	153	98	1	BUL-2V-68	ga029_1943
191	LS15409836R1	On cut bank along main channel	Aug. 1958	4/19/2010	Yes	154	98	36	BUL-2V-68	ga029_1943
192	LS15409836R2	On cut bank along main channel	Aug. 1958	4/19/2010	Yes	154	98	36	BUL-2V-68	ga029_1943
193	LS15409731R1	On cut bank along main channel, scattered trees and fields above	Aug. 1958	4/19/2010	Yes	154	97	31	BUL-2V-149	ga032_1943
194	LS15409730R1	On cut bank along main channel, scattered trees and fields above	Aug. 1958	4/19/2010	Yes	154	97	30	BUL-2V-150	ga032_1943



OBJECTID	Transect	Comment	Photo_Date	Date_	Confidence	Township	Range	Section_	Photo_File	Topo
195	LS15409730R2	On main river channel, willow flat below, scattered trees and fields above	Aug. 1958	4/19/2010	Yes	154	97	30	BUL-2V-150	ga032_1943
196	LS15409729R1	On main river channel, island forming below, above scattered trees and two-track to field	Aug. 1958	4/19/2010	Yes	154	97	29	BUL-2V-150	ga032_1943
197	LS15409729R2	Placement based on vegetation density, willows and channels below, above older river bed, two-tracks, fields, remnant channel segments above	Aug. 1958	4/19/2010	Yes	154	97	29	BUL-2V-150	ga032_1943
198	LS15409728R1	Placement based on vegetation density, willows and channels below, above older river bed, two-tracks, fields, remnant channel segments above	Aug. 1958	4/19/2010	Yes	154	97	28	BUL-2V-150	ga032_1943
199	LS15409728R2	Above back channel, narrow wooded banded field above	Aug. 1958	4/19/2010	Yes	154	97	28	BUL-2V-150	ga032_1943
200	LS15409727R1	Above back channel, narrow wooded banded field above	Aug. 1958	4/19/2010	Yes	154	97	27	BUL-2V-152	ga035_1943
201	LS15409727R2	On main river channel, dense wooded area above	Aug. 1958	4/19/2010	Yes	154	97	27	BUL-2V-152	ga034_1943
202	LS15409726R1	On main river channel, fields above	Aug. 1958	4/19/2010	Yes	154	97	26	BUL-2V-152	ga034_1943
203	LS15409723R1	On main river channel, fields above	Aug. 1958	4/19/2010	Yes	154	97	23	BUL-2V-152	ga034_1943
204	LS15409724L1	Above secondary channel, fields above	Sept. 1951	4/19/2010	Yes	154	97	24	340-271	ga034_1943
205	LS15409724L2	On main river channel, fields above	Sept. 1951	4/19/2010	Yes	154	97	24	340-271	ga034_1943
206	LS15409724L3	On main river channel, fields above	Sept. 1951	4/19/2010	Yes	154	97	24	340-271	ga034_1943
207	LS15409619L1	On main river channel, fields above	Sept. 1951	4/19/2010	Yes	154	96	19	340-271	ga036_1943
208	LS15409630L1	On main river channel, fields above	Sept. 1951	4/19/2010	Yes	154	96	30	340-271	ga036_1943
209	LS15409630L2	Line of demarcations, between river flow direction, vegetation below shows east, west growth, above vegetation shows north, south growth with scattered trees along old levees, '43 topo shows sandbar below OHWL	Sept. 1951	4/19/2010	Yes	154	96	30	340-271	ga036_1943
210	LS15409629L1	On main river channel, wooded vegetation above, on old river channel	Sept. 1951	4/19/2010	Yes	154	96	29	340-271	ga036_1943
211	LS15409629L2	On main river channel, wooded vegetation above, on old river channel	Sept. 1951	4/19/2010	Yes	154	96	29	340-271	ga036_1943
212	LS15409629L3	Above sandbar willow flat, dense larger wooded vegetation above	Sept. 1951	4/19/2010	Yes	154	96	29	340-271	ga036_1943
213	LS15409621L1	Above sandbar willow flat, dense larger wooded vegetation above	Sept. 1951	4/19/2010	Yes	154	96	21	340-271	ga036_1943
214	LS15409628L1	On main river channel, wooded vegetation above, on old river channel	Sept. 1951	4/19/2010	Yes	154	96	28	340-271	ga036_1943
215	LS15409627L1	On main river channel, wooded vegetation above, on old river channel	Sept. 1951	4/19/2010	Yes	154	96	27	340-271	ga036_1943
216	LS15409627L2	Above sandbar willow flat, dense larger wooded vegetation above	Sept. 1951	4/19/2010	Yes	154	96	27	340-271	ga038_1943
217	LS15409627L3	Above sandbar willow flat, dense larger wooded vegetation above	Sept. 1951	4/19/2010	Yes	154	96	27	340-271	ga038_1943
218	LS15409626L1	Above sandbar willow flat, dense larger wooded vegetation above	Sept. 1951	4/19/2010	Yes	154	96	26	340-271	ga038_1943
219	LS15409626L2	On main river channel, appears to be an old field above	Sept. 1951	4/19/2010	Yes	154	96	26	340-271	ga038_1943
220	LS15409723R2	Above sandbar willow flat, dense larger wooded vegetation above	Sept. 1951	4/19/2010	Yes	154	97	23	340-271	ga034_1943
221	LS15409725R1	Above sandbar willow flat, dense larger wooded vegetation above	Sept. 1951	4/19/2010	Yes	154	97	25	340-271	ga034_1943
222	LS15409726R2	Above secondary channel, sandbar willow flat below, fields above	Sept. 1951	4/19/2010	Yes	154	97	26	340-271	ga035_1943
223	LS15409736R1	Above sandbar willow flat, dense larger wooded vegetation above	Sept. 1951	4/19/2010	Yes	154	97	36	340-271	ga035_1943
224	LS15409736R2	Above sandbar willow flat, dense larger wooded vegetation above	Sept. 1951	4/19/2010	Yes	154	97	36	340-271	ga035_1943
225	LS15409631R1	Above sandbar willow flat, dense larger wooded vegetation above	Sept. 1951	4/19/2010	Yes	154	96	31	340-271	ga035_1943
226	LS15409630R1	Along main river channel cut, elevation change, field above	Sept. 1951	4/19/2010	Yes	154	96	30	340-271	ga037_1943
227	LS15409630R2	On main river channel, elevation change, potential fields above	Sept. 1951	4/19/2010	Yes	154	96	30	340-271	ga037_1943
228	LS15409629R1	On main river channel, elevation change, potential fields above	Sept. 1951	4/19/2010	Yes	154	96	29	340-271	ga037_1943
229	LS15409629R2	Above sandbar willow flat, '43 topo shows elevation change	Sept. 1951	4/19/2010	Yes	154	96	29	340-271	ga037_1943
230	LS15409628R1	Above sandbar willow flat, '43 topo shows elevation change	Sept. 1951	4/19/2010	Yes	154	96	28	340-271	ga037_1943
231	LS15409628R2	On main river channel, dense wooded area above, large island in river	Sept. 1951	4/19/2010	Yes	154	96	28	340-271	ga037_1943
153	LS15309924L2	Cut bank with trees and fields above	Aug. 1958	4/12/2010	No	153	99	24	BUL-1V-58	ga025_1943
154	LS15309925L1	Cut bank with trees and fields above	Aug. 1958	4/12/2010	No	153	99	24	BUL-1V-58	ga025_1943
155	LS15309830L1	Cut bank with trees and fields above	Aug. 1958	4/12/2010	No	153	98	30	BUL-1V-57	ga027_1943
156	LS15309830L2	OHWL at obvious line between shrubs and trees	Aug. 1958	4/12/2010	No	153	98	30	BUL-1V-57	ga027_1943
157	LS15309831L1	On main river channel, near oxbow outlet, cut bank with trees above	Aug. 1958	4/12/2010	Yes	153	98	31	BUL-1V-57	ga027_1943
158	LS15309830L3	On main river channel, cut bank with trees above	Aug. 1958	4/12/2010	Yes	153	98	30	BUL-1V-56	ga027_1943
159	LS15309829L1	On main river channel, cut bank with trees and fields above	Aug. 1958	4/12/2010	Yes	153	98	29	BUL-1V-56	ga027_1943
160	LS15309829L2	On main river channel, cut bank with trees and fields above	Aug. 1958	4/12/2010	Yes	153	98	29	BUL-1V-56	ga027_1943
161	LS15309822L1	Cut bank, barren sandbar below, elevation changes above	Aug. 1958	4/19/2010	Yes	153	98	22	BUL-2V-60	ga030_1943
162	LS15309822L2	Cut bank, trees above, along main river channel	Aug. 1958	4/19/2010	Yes	153	98	22	BUL-2V-60	ga030_1943
163	LS15309823L1	Cut bank, trees above, along main river channel	Aug. 1958	4/19/2010	Yes	153	98	23	BUL-2V-60	ga030_1943
164	LS15309823L2	Cut bank, trees above, along main river channel	Aug. 1958	4/19/2010	Yes	153	98	23	BUL-2V-61	ga030_1943
165	LS15309824L1	Cut bank, scattered trees above, along main river channel	Aug. 1958	4/19/2010	Yes	153	98	24	BUL-2V-61	ga030_1943
166	LS15309813L1	Above willow flat with few trees, several trees above	Aug. 1958	4/19/2010	Yes	153	98	13	BUL-2V-61	ga029_1943
399	LS15210312L2	Wooded area with fields and irrigation canal above OHWL, OHWL on main channel	Aug. 1958	4/22/2010	Yes	152	103	12	BUL-1V-38	ga004_1943
400	LS15210207L1	Wooded area with fields and irrigation canal above OHWL, OHWL on main channel	Aug. 1958	4/22/2010	Yes	152	102	7	BUL-1V-38	ga004_1943
401	LS15210206L1	Wooded area with fields and irrigation canal above OHWL, OHWL on main channel	Aug. 1958	4/22/2010	Yes	152	102	6	BUL-1V-38	ga004_1943
402	LS15210206L2	Wooded area with fields above OHWL, OHWL on main channel	Aug. 1958	4/22/2010	Yes	152	102	6	BUL-1V-38	ga004_1943
403	LS15310234L1	Along main river channel, wetland vegetation above OHWL attributed to upland drains from fields above	Aug. 1958	4/22/2010	Yes	153	102	34	BUL-2V-7	ga004_1943
404	LS15310233L1	Along main river channel, fields above with drainage lines to river creating some wetland above OHWL	Aug. 1958	4/22/2010	Yes	153	102	33	BUL-2V-7	ga004_1943
405	LS15310233L2	OHWL above willow flat, fields above with drains to river, unable to determine vegetation type immediately	Aug. 1958	4/22/2010	Yes	153	102	33	BUL-2V-7	ga004_1943
406	LS15310228L1	OHWL above willow flat, hayed field directly above	Aug. 1958	4/22/2010	Yes	153	102	27	BUL-2V-7	ga004_1943

OBJECTID	Transect	Comment	Photo_Date	Date_	Confidence	Township	Range	Section_	Photo_File	Topo
407	LS15310228L2	Above willow flat with some hayed areas, upland includes hayed fields and several irrigation manipulations	Aug. 1958	4/22/2010	Yes	153	102	28	BUL-2V-8	ga004_1943
408	LS15310221L1	OHWL at elevation change in hayed area	Aug. 1958	4/22/2010	Yes	153	102	21	BUL-2V-8	ga004_1943
409	LS15310228L3	OHWL follows contour lines and wetland vegetation in back water channel, diverting north at this point, resuming it flow downstream	Aug. 1958	4/22/2010	Yes	153	102	28	BUL-2V-8	ga004_1943
410	LS15310221L2	Above channel where Trenton Lake enters into the river, sandbar willow below OHWL, trees above	Aug. 1958	4/22/2010	Yes	153	102	21	BUL-2V-8	ga004_1943
411	LS15310221L3	OHWL above sandbar willow flat and below field areas, irrigation canal about 1000' north of OHWL	Aug. 1958	4/22/2010	Yes	153	102	21	BUL-2V-36	ga004_1943
412	LS15310222L1	OHWL above willow flat, below row of trees along irrigation dam and fields	Aug. 1958	4/22/2010	Yes	153	102	22	BUL-2V-36	ga004_1943
413	LS15310222L2	Above willow flat, upland is a field	Aug. 1958	4/22/2010	Yes	153	102	22	BUL-2V-36	ga004_1943
414	LS15310222L3	Above sandbar willow flat, follows vegetation line and irrigation ditch	Aug. 1958	4/22/2010	Yes	153	102	22	BUL-2V-38	ga004_1943
415	LS15310223L1	Above sandbar willow flat, follows vegetation line and irrigation ditch	Aug. 1958	4/22/2010	Yes	153	102	23	BUL-2V-38	ga004_1943
416	LS15310226L1	Above sandbar willow flat, upland distinguished by tree growth and two-tracks	Aug. 1958	4/22/2010	Yes	153	102	26	BUL-2V-38	ga004_1943
417	LS15310226L2	Above willow flat, below hayed area with significant disturbance of trailing and cultivation	Aug. 1958	4/22/2010	Yes	153	102	26	BUL-2V-5	ga004_1943
418	LS15310225L1	Above sandbar willow flat, with one small hayed inclusion, upland area includes fields, road, and trails	Aug. 1958	4/22/2010	Yes	153	102	25	BUL-2V-5	ga008_1943
419	LS15310225L2	Above sandbar willow flat, with one small hayed inclusion, upland area includes fields, road, and trails	Aug. 1958	4/22/2010	Yes	153	102	25	BUL-2V-5	ga008_1943
420	LS15310225L3	Back water area, OHWL above back water channel, below upland road	Aug. 1958	4/22/2010	Yes	153	102	25	BUL-2V-5	ga008_1943
421	LS15310225L4	OHWL above sandbar willow flat, below wooded area with established trails	Aug. 1958	4/22/2010	Yes	153	102	25	BUL-2V-5	ga008_1943
422	LS15310130L1	On main river channel, upland low vegetation with established trails	Aug. 1958	4/22/2010	Yes	153	101	30	BUL-2V-5	ga008_1943
423	LS15310119L1	Above willow flat, below area with scattered trees and established trails	Aug. 1958	4/22/2010	Yes	153	101	19	BUL-2V-5	ga008_1943
424	LS15310119L2	Above willow flat, below area with scattered trees and established trails	Aug. 1958	4/22/2010	Yes	153	101	19	BUL-2V-39	ga008_1943
425	LS15310118L1	OHWL is between sandbar willow flat, and area with dense tree growth	Aug. 1958	4/22/2010	Yes	153	101	18	BUL-2V-39	ga007_1943
426	LS15310118L2	Follows lower channel in willow flat, drained fields above	Aug. 1958	4/22/2010	Yes	153	101	18	BUL-2V-39	ga007_1943
427	LS15310213L1	Cut bank with fields above	Aug. 1958	4/22/2010	Yes	153	102	13	BUL-2V-91	ga007_1943
428	LS15310112L1	Cut bank with fields above	Aug. 1958	4/22/2010	Yes	153	102	12	BUL-2V-91	ga007_1943
429	LS15310212L2	On main river channel, field upland	Aug. 1958	4/22/2010	Yes	153	102	12	BUL-2V-91	ga007_1943
430	LS15310201L1	On main river channel, upland is disturbed from railroad	Aug. 1958	4/22/2010	Yes	153	102	1	BUL-2V-91	ga007_1943
431	LS15310106L1	On main river channel, upland is disturbed from railroad	Aug. 1958	4/22/2010	Yes	153	101	6	BUL-2V-91	ga007_1943
432	LS15310106L2	On main river channel, upland is disturbed from railroad	Aug. 1958	4/22/2010	Yes	153	101	6	BUL-2V-91	ga007_1943
433	LS15210321R1	Above willow flat, trees and fields above	Aug. 1958	4/22/2010	Yes	152	103	21	BUL-1V-13	ga002_1943
434	LS15210315R1	Above willow flat, trees and fields above	Aug. 1958	4/22/2010	Yes	152	103	15	BUL-1V-13	ga002_1943
435	LS15210315R2	Along construction area for Furlong diversion, willows below OHWL	Aug. 1958	4/22/2010	Yes	152	103	15	BUL-1V-13	ga002_1943
436	LS15210315R3	Above older back channel, with wooded area above	Aug. 1958	4/22/2010	Yes	152	103	15	BUL-1V-13	ga002_1943
437	LS15210315R4	Above older back channel, with wooded area above	Aug. 1958	4/22/2010	Yes	152	103	15	BUL-1V-13	ga002_1943
438	LS15210310R1	Above older back channel, with wooded area above	Aug. 1958	4/22/2010	Yes	152	103	10	BUL-1V-13	ga002_1943
439	LS15210315R5	OHWL above willow flat, below wooded area	Aug. 1958	4/22/2010	Yes	152	103	15	BUL-1V-13	ga002_1943
440	LS15210315R6	OHWL above back channel, follows more mature tree growth	Aug. 1958	4/22/2010	Yes	152	103	15	BUL-1V-13	ga002_1943
441	LS15210323R1	Follows back channel along more mature tree growth	Aug. 1958	4/22/2010	Yes	152	103	23	BUL-1V-11	ga002_1943
442	LS15210323R2	OHWL above barren shore area and below established trees	Aug. 1958	4/22/2010	Yes	152	103	23	BUL-1V-11	ga002_1943
443	LS15210314R1	Cut bank along main river channel	Aug. 1958	4/22/2010	Yes	152	103	14	BUL-1V-11	ga002_1943
444	LS15210313R1	Cut bank along main river channel with small willow flat in front of bank, steep elevation change	Aug. 1958	4/22/2010	Yes	152	103	13	BUL-1V-11	ga005_1943
445	LS15210313R2	Cut bank along main river channel	Aug. 1958	4/22/2010	Yes	152	103	13	BUL-1V-11	ga005_1943
446	LS15210312R1	Cut bank along main river channel	Aug. 1958	4/22/2010	Yes	152	103	12	BUL-1V-38	ga005_1943
447	LS15210207R1	Cut bank along main river channel	Aug. 1958	4/22/2010	Yes	152	102	7	BUL-1V-38	ga004_1943
448	LS15210207R2	Cut bank along main river channel	Aug. 1958	4/22/2010	Yes	152	102	7	BUL-1V-38	ga004_1943
449	LS15210206R1	Cut bank along main river channel	Aug. 1958	4/22/2010	Yes	152	102	6	BUL-1V-38	ga004_1943
450	LS15210206R2	Cut bank along main river channel	Aug. 1958	4/22/2010	Yes	152	102	6	BUL-1V-38	ga004_1943
451	LS15310234R1	On cut bank behind secondary channel, willow flat island in front, fields upland	Aug. 1958	4/22/2010	Yes	153	102	34	BUL-1V-38	ga004_1943
452	LS15310234R2	Cut bank along main river channel, fields upland	Aug. 1958	4/22/2010	Yes	153	102	34	BUL-1V-38	ga004_1943
453	LS15310234R3	Cut bank along main river channel, upland is established wooded area	Aug. 1958	4/22/2010	Yes	153	102	34	BUL-2V-7	ga004_1943
454	LS15310227R1	Cut bank along main river channel, scattered trees and fields above	Aug. 1958	4/22/2010	Yes	153	102	27	BUL-2V-8	ga004_1943
455	LS15310227R2	Cut bank along main river channel, scattered trees and fields above	Aug. 1958	4/22/2010	Yes	153	102	27	BUL-2V-8	ga004_1943
456	LS15310227R3	On main river channel, field upland	Aug. 1958	4/22/2010	Yes	153	102	27	BUL-2V-37	ga004_1943
457	LS15310222R1	On main river channel, sandbar in front and field upland	Aug. 1958	4/22/2010	Yes	153	102	22	BUL-2V-37	ga004_1943
458	LS15310227R4	Sandbar willow below, field upland	Aug. 1958	4/22/2010	Yes	153	102	27	BUL-2V-37	ga004_1943
459	LS15310226R1	Sandbar willows flat below with numerous channels though it, hayed field upland	Aug. 1958	4/22/2010	Yes	153	102	26	BUL-2V-6	ga004_1943
460	LS15310226R2	Sandbar willows flat below with numerous channels though it, hayed field upland	Aug. 1958	4/22/2010	Yes	153	102	26	BUL-2V-6	ga004_1943
461	LS15310226R3	Dense vegetation below with channel though willows, farming has been attempted in a portion of it below OHWL, OHWL follows road with drier fields above	Aug. 1958	4/22/2010	Yes	153	102	26	BUL-2V-6	ga004_1943
462	LS15310236R1	OHWL above back channel and willow flat, upland includes a road and fields	Aug. 1958	4/22/2010	Yes	153	102	36	BUL-2V-6	ga004_1943
463	LS15310225R1	OHWL above willow flat, sparse vegetation with road and a line of trees above	Aug. 1958	4/22/2010	Yes	153	102	25	BUL-2V-6	ga008_1943
464	LS15310225R2	OHWL on cut bank, willow flat below, more mature vegetation and fields above	Aug. 1958	4/22/2010	Yes	153	102	25	BUL-2V-5	ga008_1943
465	LS15310130R1	OHWL on cut bank, willow flat below, more mature vegetation and fields above	Aug. 1958	4/22/2010	Yes	153	101	30	BUL-2V-5	ga008_1943
466	LS15310130R2	Depositional dirt from upland, row of trees above OHWL	Aug. 1958	4/22/2010	Yes	153	101	30	BUL-2V-5	ga008_1943

OBJECTID	Transect	Comment	Photo_Date	Date_	Confidence	Township	Range	Section_	Photo_File	Topo
467	LS15310130R3	On main channel, road directly above that parallels river channel	Aug. 1958	4/22/2010	Yes	153	101	30	BUL-2V-40	ga008_1943
468	LS15310120R1	On main channel, road directly above that parallels river channel	Aug. 1958	4/22/2010	Yes	153	101	20	BUL-2V-40	ga008_1943
469	LS15310120R2	On main channel, road directly above that parallels river channel	Aug. 1958	4/22/2010	Yes	153	101	20	BUL-2V-40	ga008_1943
470	LS15310117R1	On main channel, road directly above that parallels river channel	Aug. 1958	4/22/2010	Yes	153	101	17	BUL-2V-40	ga007_1943
471	LS15310118R1	On main channel, road directly above that parallels river channel	Aug. 1958	4/22/2010	Yes	153	101	18	BUL-2V-40	ga007_1943
472	LS15310118R2	OHWL is behind a mostly barren depositional area, upland vegetation is mature trees	Aug. 1958	4/22/2010	Yes	153	101	18	BUL-2V-91	ga007_1943
473	LS15310107R1	OHWL follows old back channel with various flow striations, upland is more dense vegetation and fields	Aug. 1958	4/22/2010	Yes	153	101	7	BUL-2V-91	ga007_1943
474	LS15310107R2	OHWL follows old back channel with various flow striations, upland is more dense vegetation and fields	Aug. 1958	4/22/2010	Yes	153	101	7	BUL-2V-91	ga007_1943
475	LS15310106R1	OHWL follows old back channel with various flow striations, upland is more dense vegetation and fields	Aug. 1958	4/22/2010	Yes	153	101	6	BUL-2V-91	ga007_1943
476	LS15310106R2	OHWL above sandbar willow flat with line of trees and road upland	Aug. 1958	4/22/2010	Yes	153	101	6	BUL-2V-91	ga007_1943
477	LS15309402L2	Cut bank on former White Earth River, creek combined with river in the north edge of section 2, OHWL follows cut bank	Sept. 1951	4/28/2010	Yes	153	94	2	340-275	ga051_1943
478	LS15309402L3	Cut bank on former White Earth River, river combined with Missouri river in the north edge of section 2, OHWL follows cut bank	Sept. 1951	4/28/2010	Yes	153	94	2	340-275	ga051_1943
479	LS15309401L1	Cut bank on former White Earth River, river combined with Missouri river in the north edge of section 2, OHWL follows cut bank	Sept. 1951	4/28/2010	Yes	153	94	1	340-275	ga051_1943
480	LS15309401L2	Cut bank on former White Earth River, river combined with Missouri river in the north edge of section 2, OHWL follows cut bank	Sept. 1951	4/28/2010	Yes	153	94	1	340-275	ga051_1943
481	LS15309401L3	Cut bank on former White Earth River, river combined with Missouri river in the north edge of section 2, OHWL follows cut bank	Sept. 1951	4/28/2010	Yes	153	94	1	340-275	ga051_1943
482	LS15309306L1	Cut bank on former White Earth River, river combined with Missouri river in the north edge of section 2, OHWL follows cut bank	Sept. 1951	4/28/2010	Yes	153	93	6	340-275	ga051_1943
232	LS15409627R1	On main river channel, field above, large island in river	Sept. 1951	4/19/2010	Yes	154	96	27	340-271	ga037_1943
233	LS15409627R2	On main river channel, field above, large island in river	Sept. 1951	4/19/2010	Yes	154	96	27	340-271	ga039_1943
234	LS15409626R1	On main river channel, field above	Sept. 1951	4/19/2010	Yes	154	96	26	340-271	ga039_1943
235	LS15409626R2	On main river channel, '43 topo shows elevation change	Sept. 1951	4/19/2010	Yes	154	96	26	340-271	ga038_1943
236	LS15409626R3	Follows old channel, old island below OHWL, evidenced by '43 photos and follows 1800' '43 topo line	Sept. 1951	4/20/2010	No	154	96	26	340-271	ga039_1943
237	LS15409625R1	Follows old channel, old island below OHWL, evidenced by '43 photos and follows 1800' '43 topo line	Sept. 1951	4/20/2010	No	154	96	25	340-271	ga039_1943
238	LS15409624L1	On main river channel, fields above, cut bank	Sept. 1951	4/20/2010	Yes	154	96	24	340-273	ga038_1943
239	LS15409625L1	On main river channel, fields above, cut bank	Sept. 1951	4/20/2010	Yes	154	96	25	340-273	ga038_1943
240	LS15409530L1	On main river channel, fields above, cut bank	Sept. 1951	4/20/2010	Yes	154	95	30	340-273	ga040_1943
241	LS15409530L2	On secondary river channel. behind some islands, fields above	Sept. 1951	4/20/2010	Yes	154	95	30	340-273	ga040_1943
242	LS15409529L1	On secondary river channel. behind some islands, fields above	Sept. 1951	4/20/2010	Yes	154	95	29	340-273	ga040_1943
243	LS15409529L2	On secondary river channel. behind some islands, fields above	Sept. 1951	4/20/2010	Yes	154	95	29	340-273	ga041_1943
244	LS15409529L3	On main river channel, below stabilized oxbow area with trees above	Sept. 1951	4/20/2010	Yes	154	95	29	340-273	ga041_1943
245	LS15409533L1	On main river channel, below stabilized oxbow area with trees above	Sept. 1951	4/20/2010	Yes	154	95	33	340-273	ga041_1943
246	LS15409528L1	At edge of sandbar willow flat in oxbow, below older oxbow area, less dense vegetation and scattered trees above	Sept. 1951	4/20/2010	No	154	95	28	340-273	ga041_1943
247	LS15409528L2	At edge of sandbar willow flat in oxbow, below older oxbow area, less dense vegetation, trails below believe to be associated with pipeline in area	Sept. 1951	4/20/2010	No	154	95	28	340-273	ga041_1943
248	LS15409521L1	At edge of sandbar willow flat in oxbow, below older oxbow area, less dense vegetation, trails below believe to be associated with pipeline in area	Sept. 1951	4/20/2010	No	154	95	21	340-273	ga041_1943
249	LS15409522L1	At edge of sandbar willow flat in oxbow, below older oxbow area, less dense vegetation, trails below believe to be associated with pipeline in area	Sept. 1951	4/20/2010	No	154	95	22	340-273	ga041_1943
250	LS15409522L2	At edge of sandbar willow flat in oxbow, below older oxbow area, less dense vegetation, trails below believe to be associated with pipeline in area, trees above	Sept. 1951	4/20/2010	No	154	95	22	340-273	ga042_1943
251	LS15409526L1	On main river channel, behind islands, wooded growth above	Sept. 1951	4/20/2010	Yes	154	95	26	340-273	ga042_1943
252	LS15409625R2	Follows old channel, old island below OHWL, evidenced by '43 photos and follows 1800' '43 topo line	Sept. 1951	4/20/2010	No	154	96	25	340-273	ga039_1943
253	LS15409531R1	Follows old channel, old island below OHWL, evidenced by '43 photos and follows 1800' '43 topo line	Sept. 1951	4/20/2010	No	154	95	31	340-273	ga039_1943
254	LS15409531R2	Follows old channel, old island below OHWL, evidenced by '43 photos and follows 1800' '43 topo line	Sept. 1951	4/20/2010	No	154	95	31	340-273	ga041_1943
255	LS15409531R3	Follows old channel, old island below OHWL, evidenced by '43 photos and follows 1800' '43 topo line	Sept. 1951	4/20/2010	No	154	95	31	340-273	ga041_1943
256	LS15409532R1	Along main river channel, where it appears back channel enters river	Sept. 1951	4/20/2010	No	154	95	32	340-273	ga041_1943
257	LS15409532R2	On main river channel. wooded vegetation and fields above	Sept. 1951	4/20/2010	Yes	154	95	32	340-273	ga041_1943
258	LS15409533R1	On main river channel. wooded vegetation and fields above	Sept. 1951	4/20/2010	Yes	154	95	33	340-273	ga041_1943
259	LS15409533R2	On main river channel. wooded vegetation and fields above	Sept. 1951	4/20/2010	Yes	154	95	33	340-273	ga041_1943
260	LS15409534R1	On main river channel. wooded vegetation and fields above, turns above a small sandbar willow flat	Sept. 1951	4/20/2010	Yes	154	95	34	340-273	ga041_1943
261	LS15409527R1	On main river channel. wooded vegetation and fields above, turns along wood line edge downstream	Sept. 1951	4/20/2010	Yes	154	95	27	340-273	ga041_1943
262	LS15409527R2	Along edge of sandbar willow flat, below wooded vegetation	Sept. 1951	4/20/2010	Yes	154	95	27	340-273	ga043_1943
263	LS15409526R1	Along edge of sandbar willow flat, below wooded vegetation	Sept. 1951	4/20/2010	Yes	154	95	26	340-273	ga043_1943
264	LS15409526R2	Along edge of sandbar willow flat, below wooded vegetation	Sept. 1951	4/20/2010	Yes	154	95	26	340-273	ga043_1943
265	LS15409525R1	Along edge of sandbar willow flat, below wooded vegetation	Sept. 1951	4/20/2010	Yes	154	95	25	340-273	ga043_1943
266	LS15409536R1	On main river channel. trees above	Sept. 1951	4/20/2010	Yes	154	95	36	340-273	ga043_1943
267	LS15409526L2	On main river channel. trees above	Sept. 1951	4/20/2010	Yes	154	95	26	340-273	ga042_1943
268	LS15409526L3	On back channel, above sandbar willow flat, taller more mature trees above	Sept. 1951	4/20/2010	Yes	154	95	26	340-273	ga042_1943
269	LS15409525L1	On back channel, above sandbar willow flat, taller more mature trees above	Sept. 1951	4/20/2010	Yes	154	95	25	340-273	ga042_1943
270	LS15409525L2	On back channel, above sandbar willow flat, taller more mature trees above	Sept. 1951	4/20/2010	Yes	154	95	25	340-273	ga042_1943
271	LS15409430L1	On wider back channel, island below and taller more mature trees above	Sept. 1951	4/20/2010	Yes	154	94	30	340-273	ga042_1943
272	LS15409430L2	On wider back channel, island below and taller more mature trees above	Sept. 1951	4/20/2010	Yes	154	94	30	340-273	ga047_1943
273	LS15409431R1	On main river channel, cut bank, '43 topo shows elevation change	Sept. 1951	4/20/2010	Yes	154	94	31	340-273	ga043_1943
274	LS15409431R2	On main river channel, cut bank, '43 topo shows elevation change	Sept. 1951	4/20/2010	Yes	154	94	31	340-273	ga043_1943
275	LS15409431R3	On main river channel, cut bank, '43 topo shows elevation change, beginning of older oxbow downstream	Sept. 1951	4/20/2010	Yes	154	94	31	340-273	ga047_1943

OBJECTID	Transect	Comment	Photo_Date	Date_	Confidence	Township	Range	Section_	Photo_File	Topo
276	LS15409429L1	Above sandbar willow flat behind back channel, more mature vegetation above	Sept. 1951	4/20/2010	Yes	154	94	29	340-275	ga047_1943
277	LS15409429L2	Above sandbar willow flat behind back channel, more mature vegetation above	Sept. 1951	4/20/2010	Yes	154	94	29	340-275	ga047_1943
278	LS15409428L1	Above sandbar willow flat behind back channel, more mature vegetation above	Sept. 1951	4/20/2010	Yes	154	94	28	340-275	ga047_1943
279	LS15409428L2	Above sandbar willow flat behind back channel, more mature vegetation above	Sept. 1951	4/20/2010	Yes	154	94	28	340-275	ga047_1943
280	LS15409428L3	On main channel, cut bank, steep elevation change above	Sept. 1951	4/20/2010	Yes	154	94	28	340-275	ga047_1943
281	LS15409427L1	On main channel, cut bank, steep elevation change above	Sept. 1951	4/20/2010	Yes	154	94	27	340-275	ga047_1943
282	LS15409427L2	On main channel, cut bank, steep elevation change above	Sept. 1951	4/20/2010	Yes	154	94	27	340-275	ga051_1943
283	LS15409435L1	On main channel, cut bank, steep elevation change above	Sept. 1951	4/20/2010	Yes	154	94	35	340-275	ga051_1943
284	LS15409435L2	On main channel, cut bank, steep elevation change above	Sept. 1951	4/20/2010	Yes	154	94	35	340-275	ga051_1943
285	LS15309402L1	Cut bank, field directly above	Sept. 1951	4/20/2010	Yes	153	94	2	340-275	ga051_1943
286	LS15309307L1	Above willows behind back channel, steep elevation changes upland	Sept. 1951	4/20/2010	Yes	153	93	7	340-275	ga051_1943
287	LS15309307L2	Above willows behind back channel, steep elevation changes upland	Sept. 1951	4/20/2010	Yes	153	93	7	340-275	ga058_1943
288	LS15309308L1	Above sandbar willow flat, behind back channel, upland change to older river bed	Sept. 1951	4/20/2010	Yes	153	93	8	340-275	ga058_1943
289	LS15309317L1	On main river bank, farmland upland,	Sept. 1951	4/20/2010	Yes	153	93	17	340-275	ga058_1943
290	LS15309317L2	On main river bank, farmland upland,	Sept. 1951	4/20/2010	Yes	153	93	17	340-275	ga058_1943
291	LS15309320L1	On main river bank, mature vegetation upland	Sept. 1951	4/20/2010	Yes	153	93	20	340-275	ga058_1943
292	LS15309320L2	On main river bank, mature vegetation upland	Sept. 1951	4/20/2010	Yes	153	93	20	340-275	ga059_1943
293	LS15309620L3	On main river bank, mature woodland vegetation upland	Sept. 1951	4/20/2010	Yes	153	90	20	340-275	ga059_1943
294	LS15409432R1	On main river channel, old river bed upland, '43 topo shows elevation change	Sept. 1951	4/20/2010	Yes	154	94	32	340-275	ga047_1943
295	LS15409432R2	On main river channel, old river bed upland, '43 topo shows elevation change	Sept. 1951	4/20/2010	Yes	154	94	32	340-275	ga047_1943
296	LS15409433R1	On main river channel, old river bed upland, '43 topo shows elevation change	Sept. 1951	4/20/2010	Yes	154	94	33	340-275	ga047_1943
297	LS15409433R2	On main river channel, mature vegetation on upland peninsula	Sept. 1951	4/20/2010	Yes	154	94	33	340-275	ga047_1943
298	LS15409428R1	Elevation change above a barren area on main river channel, mature vegetation upland	Sept. 1951	4/20/2010	Yes	154	94	28	340-275	ga047_1943
299	LS15409434R1	Vegetation changes at OHWL, mature upland vegetation, sandbar willows below on back channel	Sept. 1951	4/20/2010	Yes	154	94	34	340-275	ga047_1943
300	LS15409433R3	Vegetation changes at OHWL, mature upland vegetation, sandbar willows below on back channel	Sept. 1951	4/20/2010	Yes	154	94	33	340-275	ga047_1943
301	LS15409433R4	Vegetation changes at OHWL, mature upland vegetation, sandbar willows below on back channel, large island formed between back channel and main channel	Sept. 1951	4/20/2010	Yes	154	94	33	340-275	ga047_1943
302	LS15309404R1	Vegetation changes at OHWL, mature upland vegetation, sandbar willows below on back channel, large island formed between back channel and main channel	Sept. 1951	4/20/2010	Yes	153	94	4	340-275	ga047_1943
303	LS15309404R2	Vegetation changes at OHWL, mature upland vegetation, behind a smaller back channel with sandbar willow flat	Sept. 1951	4/20/2010	Yes	153	94	4	340-275	ga047_1943
304	LS15309409R1	Along steep edge of upland, sandbar willow flat below	Sept. 1951	4/20/2010	Yes	153	94	9	340-275	ga047_1943
305	LS15309410R1	Along steep edge of upland, sandbar willow flat below	Sept. 1951	4/20/2010	Yes	153	94	10	340-275	ga047_1943
306	LS15309410R2	On bank of main channel, below steep upland elevation change, cut bank	Sept. 1951	4/20/2010	Yes	153	94	10	340-275	ga047_1943
307	LS15309410R3	On bank of main channel, below steep upland elevation change, cut bank	Sept. 1951	4/20/2010	Yes	153	94	10	340-275	ga051_1943
308	LS15309411R1	On bank of main channel, below steep upland elevation change, cut bank	Sept. 1951	4/20/2010	Yes	153	94	11	340-275	ga051_1943
309	LS15309411R2	Sandbar willows below OHWL, elevation change with mature vegetation upland	Sept. 1951	4/20/2010	Yes	153	94	11	340-275	ga051_1943
310	LS15309412R1	Sandbar willows below OHWL, elevation change with field upland	Sept. 1951	4/20/2010	Yes	153	94	12	340-275	ga051_1943
311	LS15309412R2	On main river channel, elevation change and woodland vegetation upland	Sept. 1951	4/20/2010	Yes	153	94	12	340-275	ga051_1943
312	LS15309307R1	On main river channel, elevation change and woodland vegetation upland	Sept. 1951	4/20/2010	Yes	153	93	7	340-275	ga051_1943
313	LS15309318R1	On main river channel, elevation change and field upland	Sept. 1951	4/20/2010	Yes	153	93	18	340-275	ga051_1943
314	LS15309318R2	On main river channel, elevation change and mature vegetation upland	Sept. 1951	4/20/2010	Yes	153	93	18	340-275	ga058_1943
315	LS15309317R1	On main river channel, elevation change and mature vegetation upland	Sept. 1951	4/20/2010	Yes	153	93	17	340-275	ga058_1943
316	LS15309317R2	Above sandbar willow flat with trees above, follows back channel	Sept. 1951	4/20/2010	Yes	153	93	17	340-275	ga058_1943
317	LS15309320R1	Follows back channel, above sandbar willow flat, old river bed behind	Sept. 1951	4/20/2010	Yes	153	93	20	340-275	ga058_1943
318	LS15309320R2	Follows back channel, above sandbar willow flat, old river bed behind	Sept. 1951	4/20/2010	Yes	153	93	20	340-275	ga059_1943
319	LS15309320R3	On main river channel behind sandbar, old river bed behind	Sept. 1951	4/20/2010	Yes	153	93	20	340-275	ga059_1943
320	LS15309329L1	On main river bank, on elevation change, mature vegetation upland	Sept. 1951	4/20/2010	Yes	153	93	29	340-301	ga059_1943
321	LS15309329L2	Above barren sand area on main river channel, mature vegetation above.	Sept. 1951	4/20/2010	Yes	153	93	29	340-301	ga059_1943
322	LS15309328L1	Above area with little vegetation. along main river channel, more mature vegetation above	Sept. 1951	4/20/2010	Yes	153	93	28	340-301	ga059_1943
323	LS15309328L2	Along flow line, slight change in vegetation cover, trees developing above on old river bed	Sept. 1951	4/20/2010	Yes	153	93	28	340-301	ga059_1943
324	LS15309327L1	Along flow line, slight change in vegetation cover, trees developing above on old river bed	Sept. 1951	4/20/2010	Yes	153	93	27	340-301	ga059_1943
325	LS15309327L2	Along vegetation line, created by backwater flooding, trees and fields above OHWL	Sept. 1951	4/20/2010	Yes	153	93	27	340-301	ga059_1943
326	LS15309328L3	Along vegetation line, created by backwater flooding, trees and fields above OHWL	Sept. 1951	4/20/2010	Yes	153	93	28	340-301	ga059_1943
327	LS15309321L1	Along vegetation line, created by backwater flooding, trees and fields above OHWL	Sept. 1951	4/20/2010	Yes	153	93	21	340-301	ga059_1943
328	LS15309322L1	Along vegetation line, created by backwater flooding, trees and fields above OHWL	Sept. 1951	4/20/2010	Yes	153	93	22	340-301	ga059_1943
329	LS15309327L3	Along vegetation line, created by backwater flooding, trees above OHWL	Sept. 1951	4/20/2010	Yes	153	93	27	340-301	ga059_1943
330	LS15309326L1	On main river channel, at elevation change	Sept. 1951	4/20/2010	Yes	153	93	26	340-301	ga066_1943
331	LS15309326L2	On main river channel, cut bank at elevation change	Sept. 1951	4/20/2010	Yes	153	93	26	340-301	ga066_1943
332	LS15309326L3	On main river channel, cut bank at elevation change, two-track above	Sept. 1951	4/20/2010	Yes	153	93	26	340-301	ga066_1943
333	LS15309335L1	On main river channel, mature trees upland	Sept. 1951	4/20/2010	Yes	153	93	35	340-301	ga066_1943
334	LS15309335L2	Above sandbar willow flat, upland with mature trees	Sept. 1951	4/20/2010	Yes	153	93	35	340-301	ga066_1943
335	LS15209304L1	Above back channel cut, mature trees upland, island in front of channel	Sept. 1951	4/20/2010	Yes	152	93	4	340-301	ga066_1943

OBJECTID	Transect	Comment	Photo_Date	Date_	Confidence	Township	Range	Section_	Photo_File	Topo
336	LS15209304L2	On main river channel, mature trees upland,	Sept. 1951	4/20/2010	Yes	152	93	4	340-301	ga066_1943
337	LS15209304L3	Above sandbar willow flat on main river channel, mature trees upland	Sept. 1951	4/20/2010	Yes	152	93	4	340-301	ga066_1943
338	LS15209310L1	Above sandbar willow flat on main river channel, mature trees upland	Sept. 1951	4/20/2010	Yes	152	93	10	340-301	ga066_1943
339	LS15209310L2	On main river channel, houses upland	Sept. 1951	4/20/2010	Yes	152	93	10	340-301	ga066_1943
340	LS15209311L1	On main river channel, two-track and major drainage upland, drainage enter river downstream	Sept. 1951	4/20/2010	Yes	152	93	11	340-301	ga066_1943
341	LS15209311L2	On main river channel, just below where drainage enters river, steep topo change	Sept. 1951	4/20/2010	Yes	152	93	11	340-301	ga074_1943
342	LS15209311L3	On main river channel, steep topo change, cut bank	Sept. 1951	4/20/2010	Yes	152	93	11	340-301	ga074_1943
343	LS15209314L1	On main river channel, steep topo change, cut bank	Sept. 1951	4/20/2010	Yes	152	93	14	340-301	ga074_1943
344	LS15309329R1	On topo change. above a sandbar with a band of sandbar willow	Sept. 1951	4/20/2010	Yes	153	93	29	340-301	ga059_1943
345	LS15309329R2	On main river channel, at topo elevation change, two-track on upland	Sept. 1951	4/20/2010	Yes	153	93	29	340-301	ga059_1943
346	LS15309332R1	On main river channel, at topo elevation change, two-track on upland	Sept. 1951	4/20/2010	Yes	153	93	29	340-301	ga059_1943
347	LS15309333R1	On main river channel, at topo elevation change, field upland	Sept. 1951	4/20/2010	Yes	153	93	33	340-301	ga059_1943
348	LS15309333R2	On main river channel, at topo elevation change, field upland	Sept. 1951	4/20/2010	Yes	153	93	33	340-301	ga059_1943
349	LS15309334R1	On main river channel, at topo elevation change, field upland	Sept. 1951	4/20/2010	Yes	153	93	34	340-301	ga059_1943
350	LS15309327R1	On main river channel, at topo elevation change, field upland	Sept. 1951	4/20/2010	Yes	153	93	27	340-301	ga059_1943
351	LS15309327R2	On main river channel, at topo elevation change, on old river bed	Sept. 1951	4/20/2010	Yes	153	93	27	340-301	ga066_1943
352	LS15309326R1	Follows water line on willow flat, field upland	Sept. 1951	4/20/2010	Yes	153	93	26	340-301	ga066_1943
353	LS15309335R1	On main river channel, topo change	Sept. 1951	4/20/2010	Yes	153	93	35	340-301	ga066_1943
354	LS15309335R2	On flow line above willow flat,	Sept. 1951	4/20/2010	Yes	153	93	35	340-301	ga066_1943
355	LS15209305R1	On flow line above willow flat,	Sept. 1951	4/20/2010	Yes	152	93	5	340-301	ga066_1943
356	LS15209305R2	On main river channel, small elevation change	Sept. 1951	4/20/2010	Yes	152	93	5	340-301	ga066_1943
357	LS15209304R1	On flow line, above willow flat	Sept. 1951	4/20/2010	Yes	152	93	5	340-301	ga066_1943
358	LS15209309R1	On main river channel, topo change, field upland	Sept. 1951	4/20/2010	Yes	152	93	9	340-301	ga066_1943
359	LS15209310R1	On main river channel, topo change, field upland	Sept. 1951	4/20/2010	Yes	152	93	10	340-301	ga066_1943
360	LS15209310R2	On main river channel, topo change, old depositional area with trees upland	Sept. 1951	4/20/2010	Yes	152	93	10	340-301	ga066_1943
361	LS15209310R3	On main river channel, topo change, old depositional area with trees upland	Sept. 1951	4/20/2010	Yes	152	93	10	340-301	ga067_1943
362	LS15209311R1	Above depositional willow flat with trees upland	Sept. 1951	4/20/2010	Yes	152	93	11	340-301	ga067_1943
363	LS15209314R1	Above depositional willow flat with trees upland	Sept. 1951	4/20/2010	Yes	152	93	14	340-301	ga067_1943
364	LS15409729L1	On main river channel, cut bank, mature trees upland, small willow trees on turning point of main river channel	Aug. 1958	4/21/2010	Yes	154	97	29	BUL-2V-189	ga031_1943
365	LS15409720L1	OHWL based on vegetation structure, low willows below and taller trees above	Aug. 1958	4/21/2010	Yes	154	97	20	BUL-2V-189	ga031_1943
366	LS15409720L2	OHWL above marshy area indicated by standing water, OHWL dissects trees area based on density of trees, more trees above OHWL vs. scattered trees below and indication of saturation area based on appearance of two-track	Aug. 1958	4/21/2010	Yes	154	97	20	BUL-2V-189	ga031_1943
367	LS15409720L3	OHWL above marshy area, upland has a row of trees in front of a silty barren area from drainage	Aug. 1958	4/21/2010	Yes	154	97	20	BUL-2V-189	ga031_1943
368	LS15409720L4	OHWL is above back channel, standing water below	Aug. 1958	4/21/2010	Yes	154	97	20	BUL-2V-189	ga031_1943
369	LS15409721L1	On cut bank, upland steep elevation change with barren hills, standing water below OHWL	Aug. 1958	4/21/2010	Yes	154	97	21	BUL-2V-189	ga031_1943
370	LS15409721L2	On cut bank, upland steep elevation change with barren hills, standing water below OHWL	Aug. 1958	4/21/2010	Yes	154	97	21	BUL-2V-189	ga031_1943
371	LS15409721L3	On cut bank, upland steep elevation change with barren hills, standing water below OHWL	Aug. 1958	4/21/2010	Yes	154	97	21	BUL-2V-189	ga031_1943
372	LS15409722L1	On cut bank, standing water below OHWL	Aug. 1958	4/21/2010	Yes	154	97	22	BUL-2V-188	ga034_1943
373	LS15409722L2	On cut bank, standing water below OHWL	Aug. 1958	4/21/2010	Yes	154	97	22	BUL-2V-186	ga034_1943
374	LS15409714L1	On cut bank, standing water below OHWL, Tobacco Garden Creek on upland above, low structure vegetation with two-tracks in area	Aug. 1958	4/21/2010	Yes	154	97	14	BUL-2V-186	ga034_1943
375	LS15409714L2	On cut bank, marshy below. above OHWL steep elevation change, fields upland	Aug. 1958	4/21/2010	Yes	154	97	14	BUL-2V-186	ga034_1943
376	LS15409723L1	On cut bank, along main river channel, sandbar in front, upland includes farmstead. roads and fields	Aug. 1958	4/21/2010	Yes	154	97	23	BUL-2V-186	ga034_1943
377	LS15309829L3	OHWL below mature trees, above willow flat with hayed fields	Aug. 1958	4/21/2010	Yes	153	98	29	BUL-1V-55	ga027_1943
378	LS15309821L1	OHWL below mature trees, above willow flat with hayed fields	Aug. 1958	4/21/2010	Yes	153	98	21	BUL-1V-55	ga027_1943
379	LS15309821L2	OHWL below mature trees, above willow flat with hayed fields, steep elevation change	Aug. 1958	4/21/2010	Yes	153	98	21	BUL-1V-55	ga027_1943
380	LS15309821L3	OHWL below mature trees, above willow flat with hayed fields, steep elevation change	Aug. 1958	4/21/2010	Yes	153	98	21	BUL-1V-55	ga027_1943
381	LS15210321L1	Above a mostly barren sandbar flat with vegetation beginning establishment on the farther downstream, mature trees on large old oxbow above that is farmed (1958); topo lines indicate low cut bank	Aug. 1958	4/22/2010	Yes	152	103	21	BUL-1V-13	ga002_1943
382	LS15210316L1	On main river channel, mature trees on large old oxbow above that is farmed (1958) above an irrigation ditch 1500' above bank, area within 1500' is drained, but does include some barren areas with wetland veg	Aug. 1958	4/22/2010	Yes	152	103	16	BUL-1V-13	ga002_1943
383	LS15210316L2	Above sandbar willow flat, below established trees, willow flats above assumed from drained field	Aug. 1958	4/22/2010	Yes	152	103	16	BUL-1V-13	ga002_1943
384	LS15210309L1	OHWL lies between an area with low dense sandbar willows below with mature trees and fields above with developed roads	Aug. 1958	4/22/2010	Yes	152	103	9	BUL-1V-13	ga002_1943
385	LS15210309L2	OHWL follows wooded line, fields above with developed roads, upland drainage channel, sandbar willow flat below	Aug. 1958	4/22/2010	Yes	152	103	9	BUL-1V-34	ga001_1943
386	LS15210309L3	Above willow flat, upland is blocked from over land drainage above from irrigation canal and roads, follows '43 topo line	Aug. 1958	4/22/2010	Yes	152	103	9	BUL-1V-34	ga001_1943
387	LS15210304L1	Above willow flat, upland is blocked from over land drainage above from irrigation canal and roads, follows '43 topo line	Aug. 1958	4/22/2010	Yes	152	103	4	BUL-1V-34	ga001_1943
388	LS15210303L1	cut channel on main river course, upland is blocked from over land drainage above from irrigation canal and roads, follows '43 topo line	Aug. 1958	4/22/2010	Yes	152	103	3	BUL-1V-34	ga001_1943
389	LS15210303L2	cut channel on main river course, upland is blocked from over land drainage above from irrigation canal and roads, follows '43 topo line	Aug. 1958	4/22/2010	Yes	152	103	3	BUL-1V-34	ga001_1943
390	LS15210303L3	cut channel on main river course, upland is blocked from over land drainage above from irrigation canal and roads, follows '43 topo line	Aug. 1958	4/22/2010	Yes	152	103	3	BUL-1V-35	ga001_1943
391	LS15210311L1	cut channel on main river course, upland is blocked from over land drainage above from irrigation canal and roads, follows '43 topo line	Aug. 1958	4/22/2010	Yes	152	103	11	BUL-1V-35	ga001_1943
392	LS15210311L2	cut channel on main river course, upland is blocked from over land drainage above from irrigation canal and roads, follows '43 topo line	Aug. 1958	4/22/2010	Yes	152	103	11	BUL-1V-35	ga002_1943
393	LS15210311L3	cut channel on main river course, upland is blocked from over land drainage above from irrigation canal and roads, follows '43 topo line	Aug. 1958	4/22/2010	Yes	152	103	11	BUL-1V-35	ga002_1943
394	LS15210314L1	On main river channel, below wooded area on depositional peninsula	Aug. 1958	4/22/2010	Yes	152	103	14	BUL-1V-11	ga002_1943
395	LS15210314L2	near end of depositional peninsula; barren sandbar below with island developing; developed vegetation above OHWL	Aug. 1958	4/22/2010	Yes	152	103	14	BUL-1V-11	ga002_1943

OBJECTID	Transect	Comment	Photo_Date	Date_	Confidence	Township	Range	Section_	Photo_File	Topo
396	LS15210313L1	On main river channel, below wooded area on depositional peninsula	Aug. 1958	4/22/2010	Yes	152	103	13	BUL-1V-11	ga005_1943
397	LS15210313L2	Wooded area with fields above OHWL, OHWL on main channel	Aug. 1958	4/22/2010	Yes	152	103	13	BUL-1V-11	ga005_1943
398	LS15210312L1	Wooded area with fields and irrigation canal above OHWL, OHWL on main channel	Aug. 1958	4/22/2010	Yes	152	103	12	BUL-1V-11	ga005_1943