

ORDINARY HIGH WATER MARK DELINEATION

YELLOWSTONE RIVER AND MISSOURI RIVER MAP SET

FROM ND/MT BORDER TO HWY 85 BRIDGE WESTERN NORTH DAKOTA

NOVEMBER 2010



BARTLETT & WEST

PROJECT:
**Ordinary High Water Mark
Delineation of the Yellowstone
and Missouri Rivers
16073.001**

CLIENT
State of North Dakota

PROJECT MANAGER C.E. DATE
James Landenberger P.E. 4881 01/10

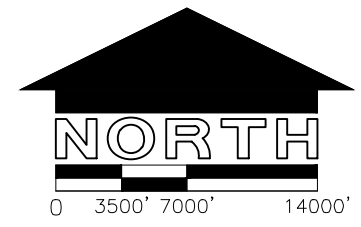
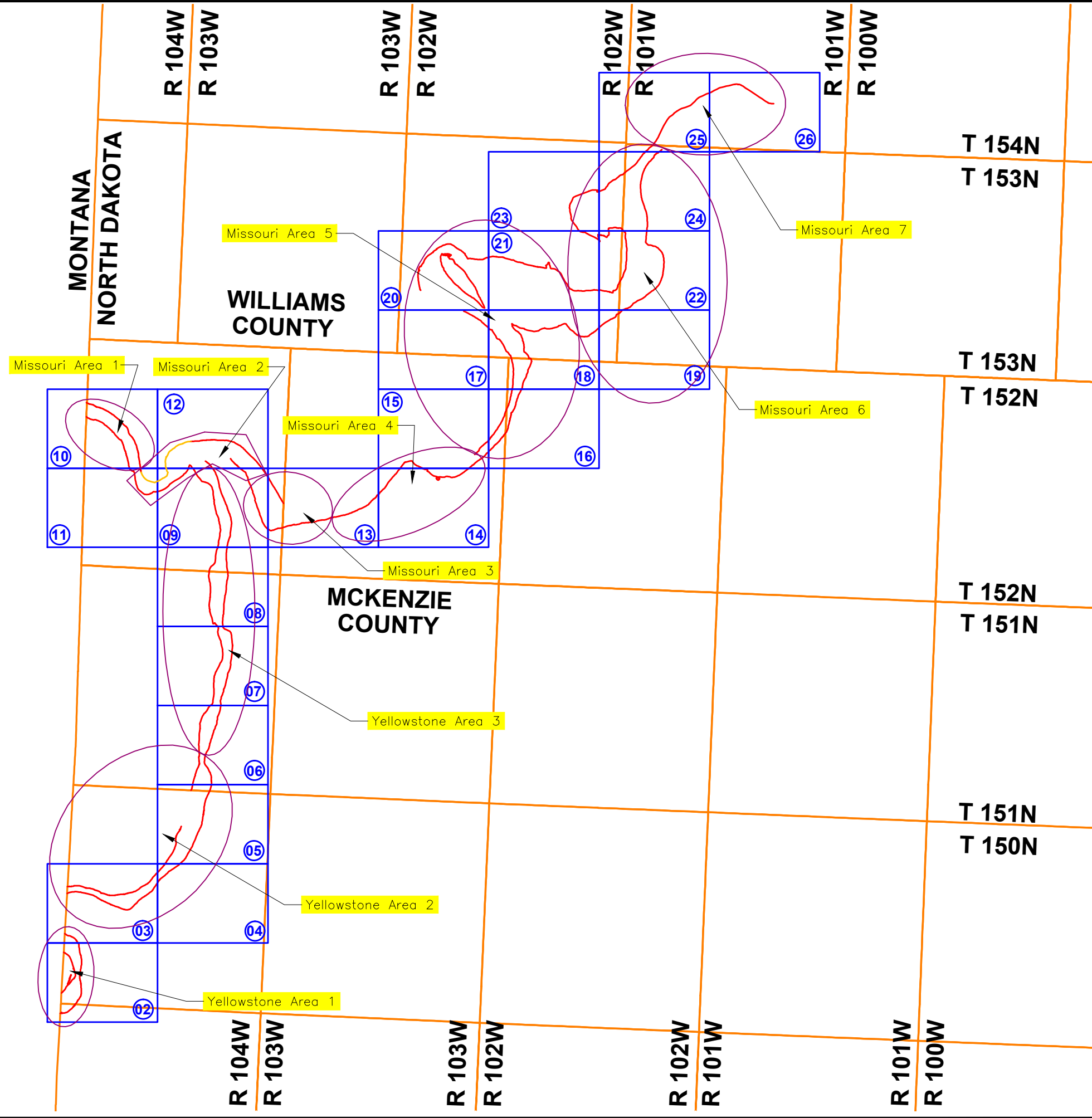
PROJECT MANAGER C.E. DATE
Bruce Zelmer L.S. 3756 01/10

ACCOUNT NUMBER FILE NUMBER
16073.001 16073.001

SHEET NUMBER **0** OF **26** SHEETS

Bartlett & West, Inc
Consulting Engineers
3456 East Century Avenue
Bismarck, ND 58503
Phone: (701) 258-1110
Fax: (701) 258-1111

Last edit on: Dec 05, 2005 by: DDM00439 Drawing name: F:\16000\16073 - OHWM Survey\16073.000\GIS-CADD\16073.000 OHWM Final Project.dwg Layout name: INDEX AERIAL Plotted on: Nov 30, 2010 - 8:59am



- DELINEATION POINT
- OHWM LINE
- TOWNSHIP BOUNDARY
- SHEET BOUNDARY
- 01 SHEET NUMBER
- PREVIOUSLY COMPLETED DELINEATION POINT
- PREVIOUSLY COMPLETED OHWM LINE

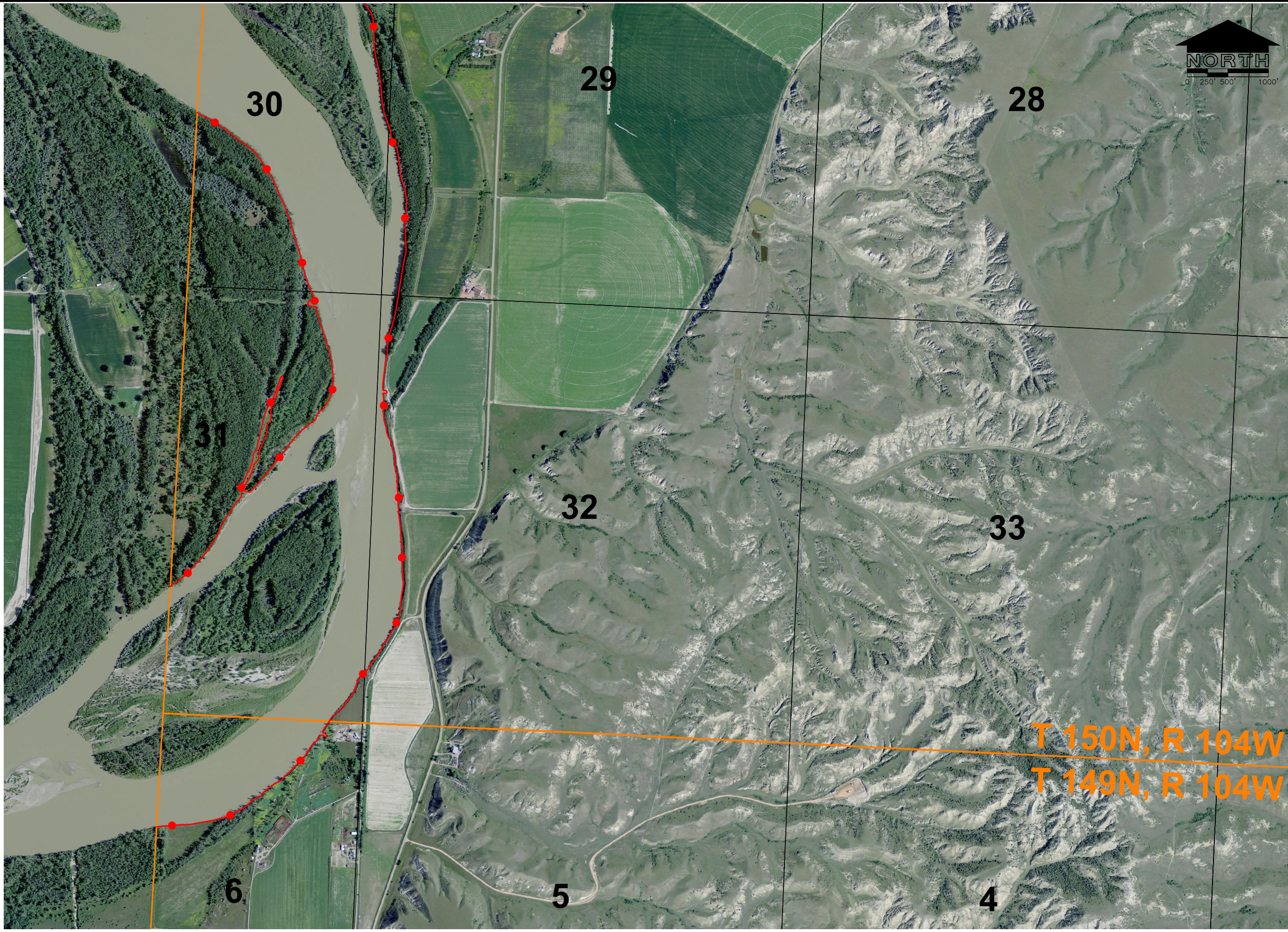
***Aerial photographs flown
June 23-July 25, 2009**

DISCLAIMER: THE WORK COMPLETED UNDER THIS CONTRACT WAS TO DELINEATE THE OHWM AND IS NOT A FINAL LEGAL DETERMINATION AS TO WHETHER ANY SPECIFIC PROPERTY IS SOVEREIGN LAND.

	BARTLETT & WEST
OHWM OVERALL INDEX SHEET	
DESIGNED BY: JMR DRAWN BY: JMR APPROVED BY: JDL DESIGN PROJ: 16073.000 CONST PROJ: SCALE: 1" = 7000' DATE: 11/10 SHEET NUMBER:	1 of 26

ALL RIGHTS RESERVED. ALL BARTLETT & WEST ENGINEERS PLANS, SPECIFICATIONS AND DRAWINGS ARE PROTECTED UNDER COPYRIGHT LAW, AND NO PART MAY BE COPIED, REPRODUCED, DISPLAYED PUBLICLY, USED TO CREATE DERIVATIVES, DISTRIBUTED, STORED IN A RETRIEVAL SYSTEM OR TRANSMITTED IN ANY FORM BY ANY MEANS WITHOUT PRIOR WRITTEN PERMISSION OF BARTLETT & WEST ENGINEERS.

Last edit on: Dec 05, 2005 by: DDM00439 Drawing name: F:\16000\16073 - OHWM Survey\16073.000\GIS-CADD\16073.000 OHWM Final Project.dwg Layout name: 02 Plotted by: DDP01105 Plotted on: Nov 24, 2010 - 8:18am



DESIGNED BY:	JMR
DRAWN BY:	JMR
APPROVED BY:	JDL
DESIGN PROJ.:	16073.000
CONST PROJ.:	
SCALE:	1" = 500'
DATE:	11/10
SHEET NUMBER:	2
	2 of 26



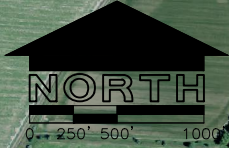
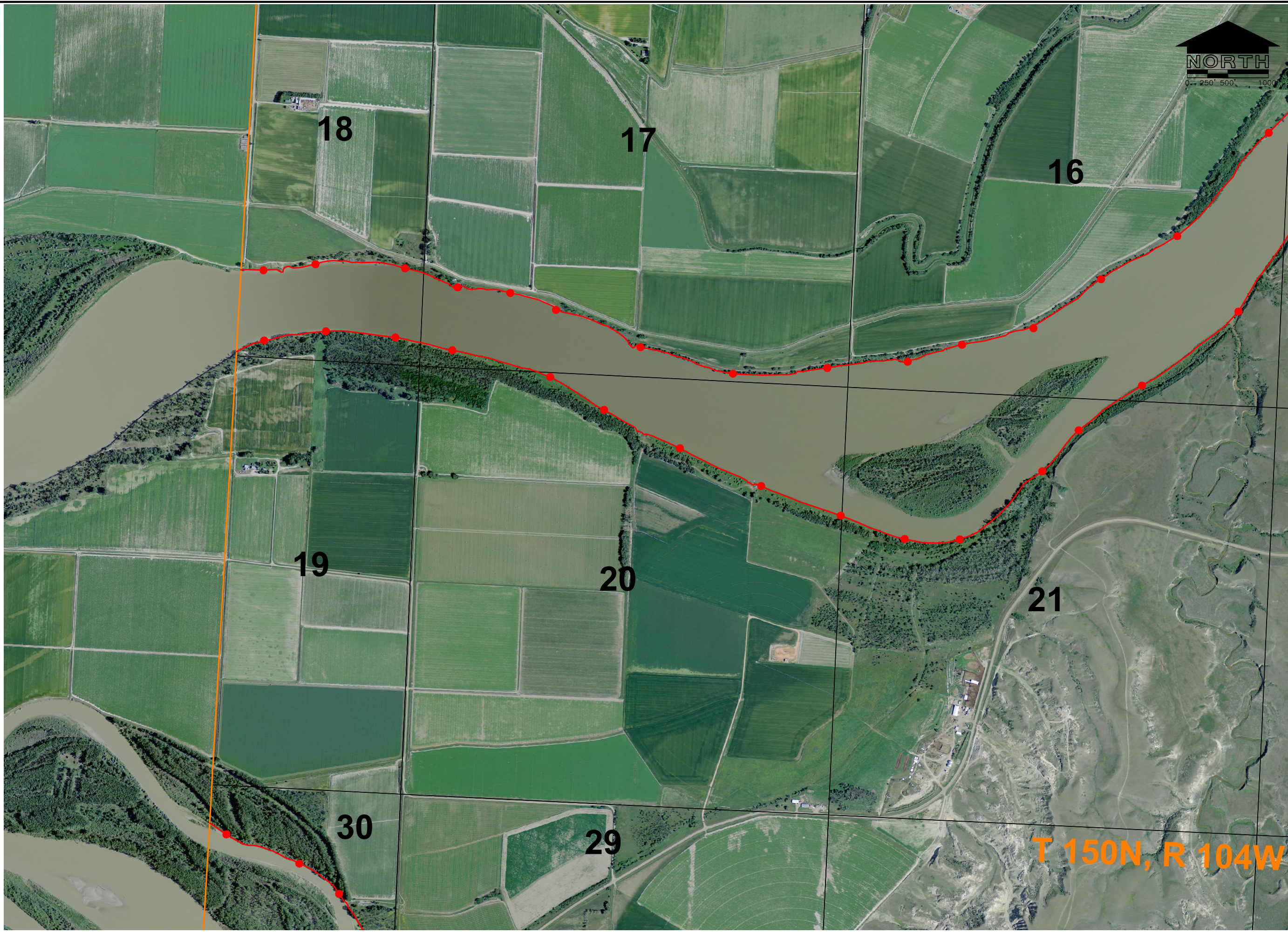
OHWM
YELLOWSTONE RIVER

T 150N, R 104W
T 149N, R 104W

DISCLAIMER: THE WORK COMPLETED UNDER THIS CONTRACT WAS TO DELINEATE THE OHWM AND IS NOT A FINAL LEGAL DETERMINATION AS TO WHETHER ANY SPECIFIC PROPERTY IS SOVEREIGN LAND.

ALL RIGHTS RESERVED. ALL BARTLETT & WEST ENGINEERS PLANS, SPECIFICATIONS AND DRAWINGS ARE PROTECTED UNDER COPYRIGHT LAW, AND NO PART MAY BE COPIED, REPRODUCED, DISPLAYED PUBLICLY, USED TO CREATE DERIVATIVES, DISTRIBUTED, STORED IN A RETRIEVAL SYSTEM OR TRANSMITTED IN ANY FORM BY ANY MEANS WITHOUT PRIOR WRITTEN PERMISSION OF BARTLETT & WEST ENGINEERS.

Last edit on: Dec 05, 2005 by: DDM00439 Drawing name: F:\16000\16073 - OHWM Survey\16073.000\GIS-CADD\16073.000 OHWM Final Project.dwg Layout name: 03 Plotted by: DDP01105 Plotted on: Nov 24, 2010 - 8:18am



DESIGNED BY: JMR	DATE: 11/10
DRAWN BY: JMR	SHEET NUMBER: 3
APPROVED BY: JDL	3 of 26
DESIGN PROJ: 16073.000	
CONST PROJ:	
SCALE: 1" = 500'	

OHWM YELLOWSTONE RIVER

BARTLETT & WEST

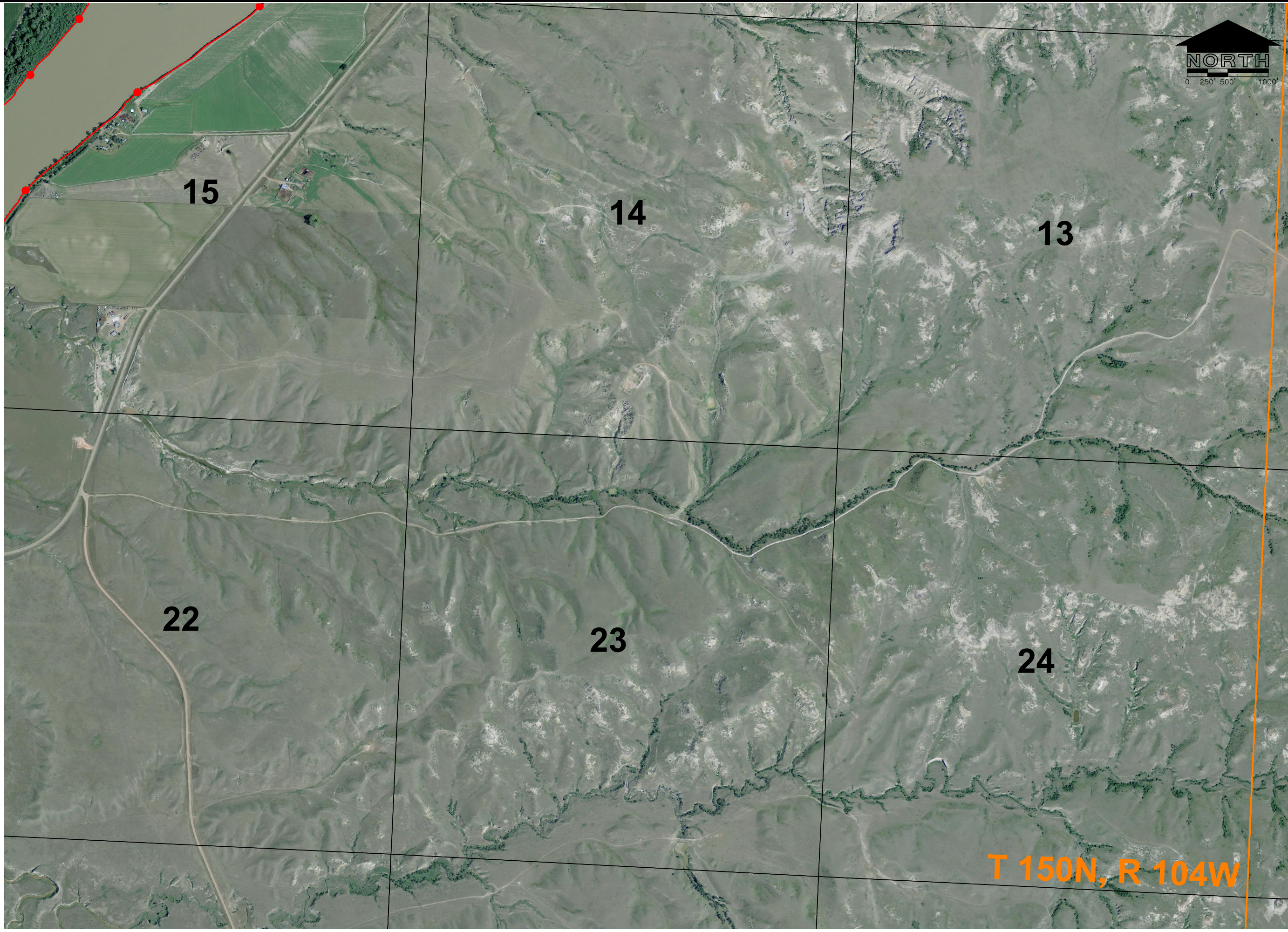
ND STATE LAND DEPARTMENT

ALL RIGHTS RESERVED. ALL BARTLETT & WEST ENGINEERS' PLANS, SPECIFICATIONS AND DRAWINGS ARE PROTECTED UNDER COPYRIGHT LAW, AND NO PART MAY BE COPIED, REPRODUCED, DISTRIBUTED, STORED IN A RETRIEVAL SYSTEM OR TRANSMITTED IN ANY FORM BY ANY MEANS WITHOUT PRIOR WRITTEN PERMISSION OF BARTLETT & WEST ENGINEERS.

T 150N, R 104W

DISCLAIMER: THE WORK COMPLETED UNDER THIS CONTRACT WAS TO DELINEATE THE OHWM AND IS NOT A FINAL LEGAL DETERMINATION AS TO WHETHER ANY SPECIFIC PROPERTY IS SOVEREIGN LAND.

Last edit on: Dec 05, 2005 by: DDM00439 Drawing name: F:\16000\16073 - OHWM Survey\16073.000\GIS-CADD\16073.000 OHWM Final Project.dwg Layout name: 04 Plotted by: DDP01105 Plotted on: Nov 24, 2010 - 8:18am



15

14

13

22

23

24

T 150N, R 104W

DESIGNED BY:	JMR
DRAWN BY:	JMR
APPROVED BY:	JDL
DESIGN PROJ:	16073.000
CONST PROJ:	
SCALE:	1" = 500'
DATE:	11/10
SHEET NUMBER	4
	4 of 26

BARTLETT & WEST

ND STATE LAND DEPARTMENT

OHWM
YELLOWSTONE RIVER

DESCRIPTION

DISCLAIMER: THE WORK COMPLETED UNDER THIS CONTRACT WAS TO DELINEATE THE OHWM AND IS NOT A FINAL LEGAL DETERMINATION AS TO WHETHER ANY SPECIFIC PROPERTY IS SOVEREIGN LAND.

ALL RIGHTS RESERVED. ALL BARTLETT & WEST ENGINEERS PLANS, SPECIFICATIONS AND DRAWINGS ARE PROTECTED UNDER COPYRIGHT LAW, AND NO PART MAY BE COPIED, REPRODUCED, DISPLAYED PUBLICLY, USED TO CREATE DERIVATIVES, DISTRIBUTED, STORED IN A RETRIEVAL SYSTEM OR TRANSMITTED IN ANY FORM BY ANY MEANS WITHOUT PRIOR WRITTEN PERMISSION OF BARTLETT & WEST ENGINEERS.

Last edit on: Dec 05, 2005 by: DMM00439 Drawing name: F:\16000\16073 - OHWM Survey\16073.000\GIS-CADD\16073.000 OHWM Final Project.dwg Layout name: 05 Plotted by: DDP01105 Plotted on: Nov 24, 2010 - 8:19am



T 151N, R 104W
T 150N, R 104W



OHWM
YELLOWSTONE RIVER

DESIGNED BY: JMR
DRAWN BY: JMR
APPROVED BY: JDL
DESIGN PROJ: 16073.000
CONST PROJ:
SCALE: 1" = 500'
DATE: 11/10
SHEET NUMBER
5
5 of 26



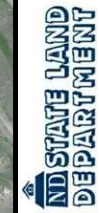
DISCLAIMER: THE WORK COMPLETED UNDER THIS CONTRACT WAS TO DELINEATE THE OHWM AND IS NOT A FINAL LEGAL DETERMINATION AS TO WHETHER ANY SPECIFIC PROPERTY IS SOVEREIGN LAND.

ALL RIGHTS RESERVED. ALL BARTLETT & WEST ENGINEERS PLANS, SPECIFICATIONS AND DRAWINGS ARE PROTECTED UNDER COPYRIGHT LAW, AND NO PART MAY BE COPIED, REPRODUCED, DISPLAYED PUBLICLY, USED TO CREATE DERIVATIVES, DISTRIBUTED, STORED IN A RETRIEVAL SYSTEM OR TRANSMITTED IN ANY FORM BY ANY MEANS WITHOUT PRIOR WRITTEN PERMISSION OF BARTLETT & WEST ENGINEERS.

Last edit on: Dec 05, 2005 by: DDM00439 Drawing name: F:\16000\16073 - OHWM Survey\16073.000\GIS-CADD\16073.000 OHWM Final Project.dwg Layout name: 06 Plotted by: DDP01105 Plotted on: Nov 24, 2010 - 8:19am



DESIGNED BY:	JMR
DRAWN BY:	JMR
APPROVED BY:	JDL
DESIGN PROJ.:	16073.000
CONST PROJ.:	
SCALE:	1" = 500'
DATE:	11/10
SHEET NUMBER	6
	6 of 26

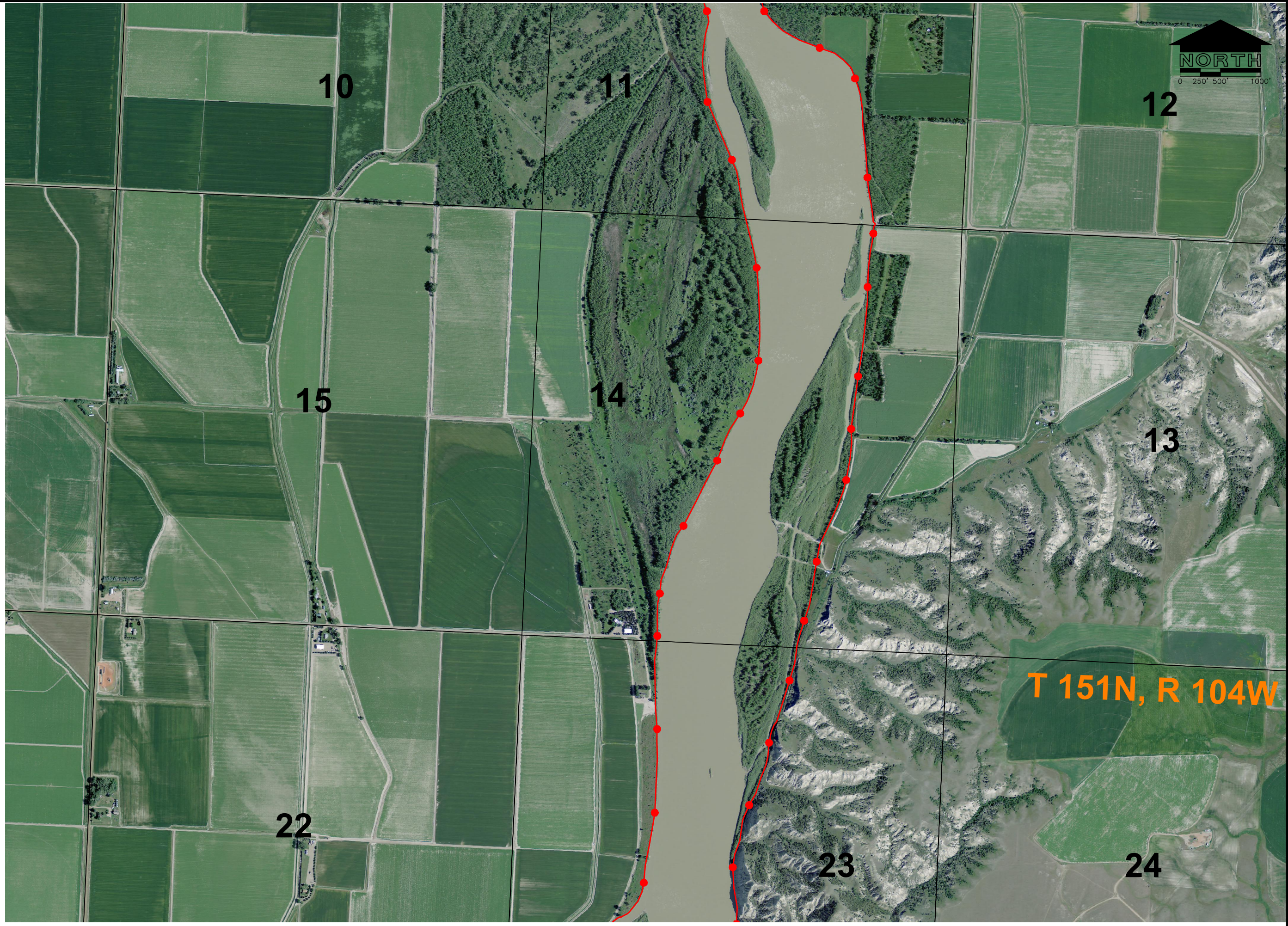


OHWM
YELLOWSTONE RIVER

ALL RIGHTS RESERVED. ALL BARTLETT & WEST ENGINEERS PLANS, SPECIFICATIONS AND DRAWINGS ARE PROTECTED UNDER COPYRIGHT LAW, AND NO PART MAY BE COPIED, REPRODUCED, DISTRIBUTED, STORED IN A RETRIEVAL SYSTEM OR TRANSMITTED IN ANY FORM BY ANY MEANS WITHOUT PRIOR WRITTEN PERMISSION OF BARTLETT & WEST ENGINEERS.

DISCLAIMER: THE WORK COMPLETED UNDER THIS CONTRACT WAS TO DELINEATE THE OHWM AND IS NOT A FINAL LEGAL DETERMINATION AS TO WHETHER ANY SPECIFIC PROPERTY IS SOVEREIGN LAND.

Last edit on: Dec 05, 2005 by: DDM00439 Drawing name: F:\16000\16073 - OHWM Survey\16073.000\GIS-CADD\16073.000 OHWM Final Project.dwg Plotted by: DDP01105 Plotted on: Nov 24, 2010 - 8:19am



DESIGNED BY:	JMR
DRAWN BY:	JMR
APPROVED BY:	JDL
DESIGN PROJ.:	16073.000
CONST PROJ.:	
SCALE:	1" = 500'
DATE:	11/10
SHEET NUMBER:	7
	7 of 26

OHWM
YELLOWSTONE RIVER

BARTLETT & WEST

ND STATE LAND DEPARTMENT

DISCLAIMER: THE WORK COMPLETED UNDER THIS CONTRACT WAS TO DELINEATE THE OHWM AND IS NOT A FINAL LEGAL DETERMINATION AS TO WHETHER ANY SPECIFIC PROPERTY IS SOVEREIGN LAND.

ALL RIGHTS RESERVED. ALL BARTLETT & WEST ENGINEERS PLANS, SPECIFICATIONS AND DRAWINGS ARE PROTECTED UNDER COPYRIGHT LAW, AND NO PART MAY BE COPIED, REPRODUCED, DISPLAYED PUBLICLY, USED TO CREATE DERIVATIVES, DISTRIBUTED, STORED IN A RETRIEVAL SYSTEM OR TRANSMITTED IN ANY FORM BY ANY MEANS WITHOUT PRIOR WRITTEN PERMISSION OF BARTLETT & WEST ENGINEERS.

Last edit on: Dec 05, 2005 by: DDM00439 Drawing name: F:\16000\16073 - OHWM Survey\16073.000\GIS-CADD\16073.000 OHWM Final Project.dwg Layout name: 08 Plotted by: DDP01105 Plotted on: Nov 24, 2010 - 8:19am



T 152N, R 104W
T 151N, R 104W

DESIGNED BY:	JMR
DRAWN BY:	JMR
APPROVED BY:	JDL
DESIGN PROJ.:	16073.000
CONST PROJ.:	
SCALE:	1" = 500'
DATE:	11/10
SHEET NUMBER	8
	8 of 26

OHWM
YELLOWSTONE RIVER

BARTLETT & WEST

ND STATE LAND DEPARTMENT

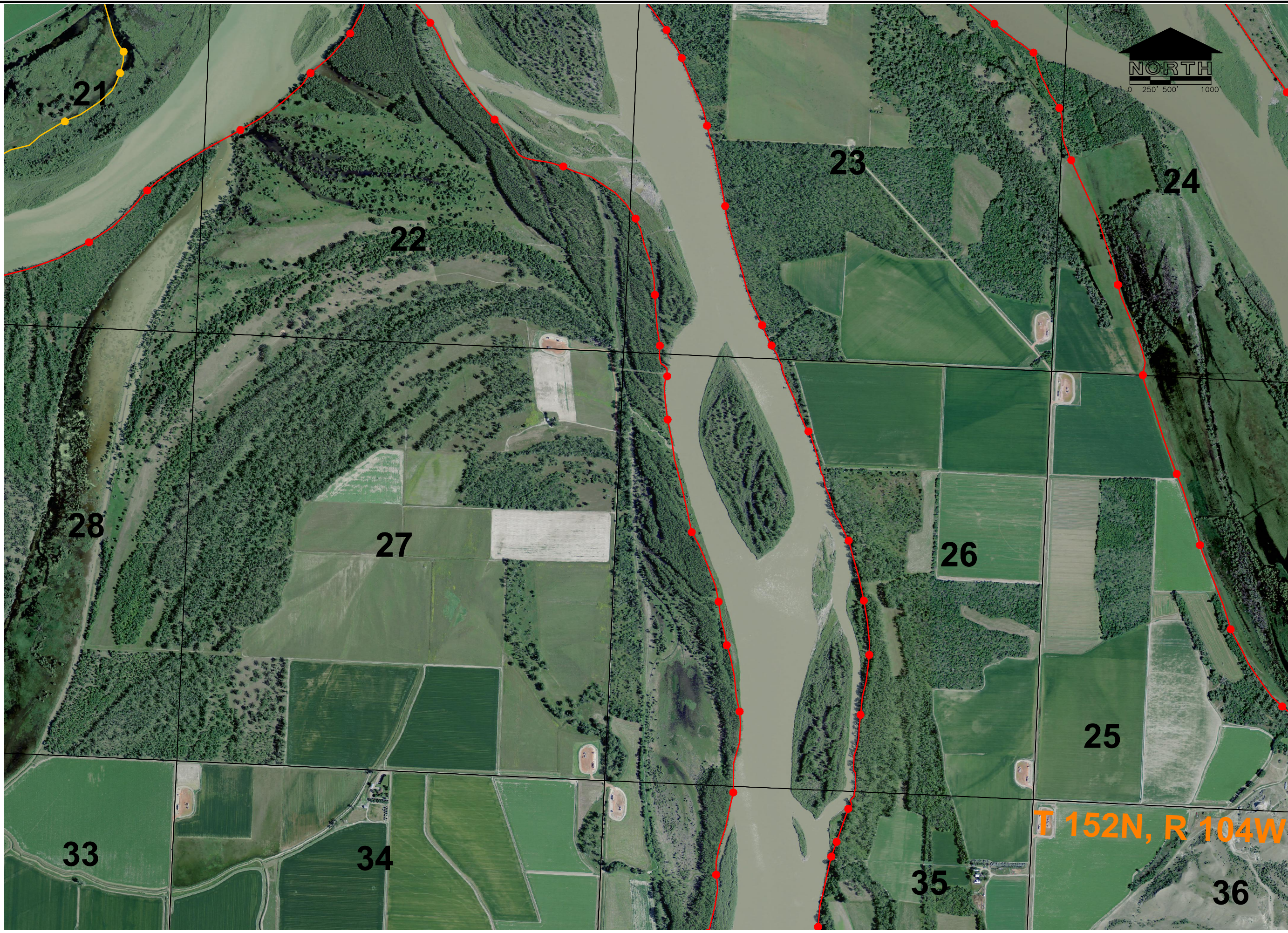
DESCRIPTION

REV. DATE

DISCLAIMER: THE WORK COMPLETED UNDER THIS CONTRACT WAS TO DELINEATE THE OHWM AND IS NOT A FINAL LEGAL DETERMINATION AS TO WHETHER ANY SPECIFIC PROPERTY IS SOVEREIGN LAND.

ALL RIGHTS RESERVED. ALL BARTLETT & WEST ENGINEERS PLANS, SPECIFICATIONS AND DRAWINGS ARE PROTECTED UNDER COPYRIGHT LAW, AND NO PART MAY BE COPIED, REPRODUCED, DISPLAYED PUBLICLY, USED TO CREATE DERIVATIVES, DISTRIBUTED, STORED IN A RETRIEVAL SYSTEM OR TRANSMITTED IN ANY FORM BY ANY MEANS WITHOUT PRIOR WRITTEN PERMISSION OF BARTLETT & WEST ENGINEERS.

Last edit on: Dec 05, 2005 by: DDM00439 Drawing name: F:\16000\16073 - OHWM Survey\16073.000\GIS-CADD\16073.000 OHWM Final Project.dwg Layout name: 09 Plotted by: DDP01105 Plotted on: Nov 24, 2010 - 8:18am



DESIGNED BY	JMR
DRAWN BY	JMR
APPROVED BY	JDL
DESIGN PROJ.	16073.000
CONST PROJ.	
SCALE	1" = 500'
DATE	11/10
SHEET NUMBER	9
	9 of 26

OHWM YELLOWSTONE-MISSOURI RIVER CONFLUENCE

BARTLETT & WEST

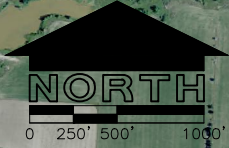
ND STATE LAND DEPARTMENT

REV.	DATE	DESCRIPTION

ALL RIGHTS RESERVED. ALL BARTLETT & WEST ENGINEERS PLANS, SPECIFICATIONS AND DRAWINGS ARE PROTECTED UNDER COPYRIGHT LAW, AND NO PART MAY BE COPIED, REPRODUCED, DISTRIBUTED, STORED IN A RETRIEVAL SYSTEM OR TRANSMITTED IN ANY FORM BY ANY MEANS WITHOUT PRIOR WRITTEN PERMISSION OF BARTLETT & WEST ENGINEERS.

DISCLAIMER: THE WORK COMPLETED UNDER THIS CONTRACT WAS TO DELINEATE THE OHWM AND IS NOT A FINAL LEGAL DETERMINATION AS TO WHETHER ANY SPECIFIC PROPERTY IS SOVEREIGN LAND.

Last edit on: Dec 05, 2005 by: DDM00439 Drawing name: F:\16000\16073 - OHWM Survey\16073.000\GIS-CADD\16073.000 OHWM Final Project.dwg Layout name: 10 Plotted by: DDP01105 Plotted on: Nov 24, 2010 - 8:20am



REV.	DATE	DESCRIPTION



OHWM
MISSOURI RIVER

DESIGNED BY: JMR
 DRAWN BY: JMR
 APPROVED BY: JDL
 DESIGN PROJ: 16073.000
 CONST PROJ:
 SCALE: 1" = 500'
 DATE: 11/10
 SHEET NUMBER
10
 10 of 26

DISCLAIMER: THE WORK COMPLETED UNDER THIS CONTRACT WAS TO DELINEATE THE OHWM AND IS NOT A FINAL LEGAL DETERMINATION AS TO WHETHER ANY SPECIFIC PROPERTY IS SOVEREIGN LAND.

ALL RIGHTS RESERVED. ALL BARTLETT & WEST ENGINEERS PLANS, SPECIFICATIONS AND DRAWINGS ARE PROTECTED UNDER COPYRIGHT LAW, AND NO PART MAY BE COPIED, REPRODUCED, DISPLAYED PUBLICLY, USED TO CREATE DERIVATIVES, DISTRIBUTED, STORED IN A RETRIEVAL SYSTEM OR TRANSMITTED IN ANY FORM BY ANY MEANS WITHOUT PRIOR WRITTEN PERMISSION OF BARTLETT & WEST ENGINEERS.

Last edit on: Dec 05, 2005 by: DDM00439 Drawing name: F:\16000\16073 - OHWM Survey\16073.000\GIS-CADD\16073.000 OHWM Final Project.dwg Layout name: 11 Plotted by: DDP01105 Plotted on: Nov 24, 2010 - 8:20am



T 152N, R 104W

19

20

21

30

29

28

31

32

33

NO.	SCALE	DESCRIPTION



BARTLETT & WEST

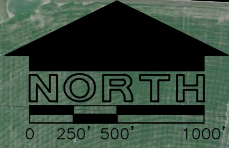
OHWM
MISSOURI RIVER

DESIGNED BY: JMR
 DRAWN BY: JMR
 APPROVED BY: JDL
 DESIGN PROJ: 16073.000
 CONST PROJ:
 SCALE: 1" = 500'
 DATE: 11/10
 SHEET NUMBER
11
 11 of 26

DISCLAIMER: THE WORK COMPLETED UNDER THIS CONTRACT WAS TO DELINEATE THE OHWM AND IS NOT A FINAL LEGAL DETERMINATION AS TO WHETHER ANY SPECIFIC PROPERTY IS SOVEREIGN LAND.

ALL RIGHTS RESERVED. ALL BARTLETT & WEST ENGINEERS PLANS, SPECIFICATIONS AND DRAWINGS ARE PROTECTED UNDER COPYRIGHT LAW, AND NO PART MAY BE COPIED, REPRODUCED, DISPLAYED PUBLICLY, USED TO CREATE DERIVATIVES, DISTRIBUTED, STORED IN A RETRIEVAL SYSTEM OR TRANSMITTED IN ANY FORM BY ANY MEANS WITHOUT PRIOR WRITTEN PERMISSION OF BARTLETT & WEST ENGINEERS.

Last edit on: Dec 05, 2005 by: DDM00439 Drawing name: F:\16000\16073 - OHWM Survey\16073.000\GIS-CADD\16073.000 OHWM Final Project.dwg Layout name: 12 Plotted by: DDP01105 Plotted on: Nov 24, 2010 - 8:20am



T 152N, R 104W

DESIGNED BY:	JMR
DRAWN BY:	JMR
APPROVED BY:	JDL
DESIGN PROJ:	16073.000
CONST PROJ:	
SCALE:	1" = 500'
DATE:	11/10
SHEET NUMBER:	12
	of 26

OHWM YELLOWSTONE-MISSOURI RIVER CONFLUENCE

BARTLETT & WEST

ND STATE LAND DEPARTMENT

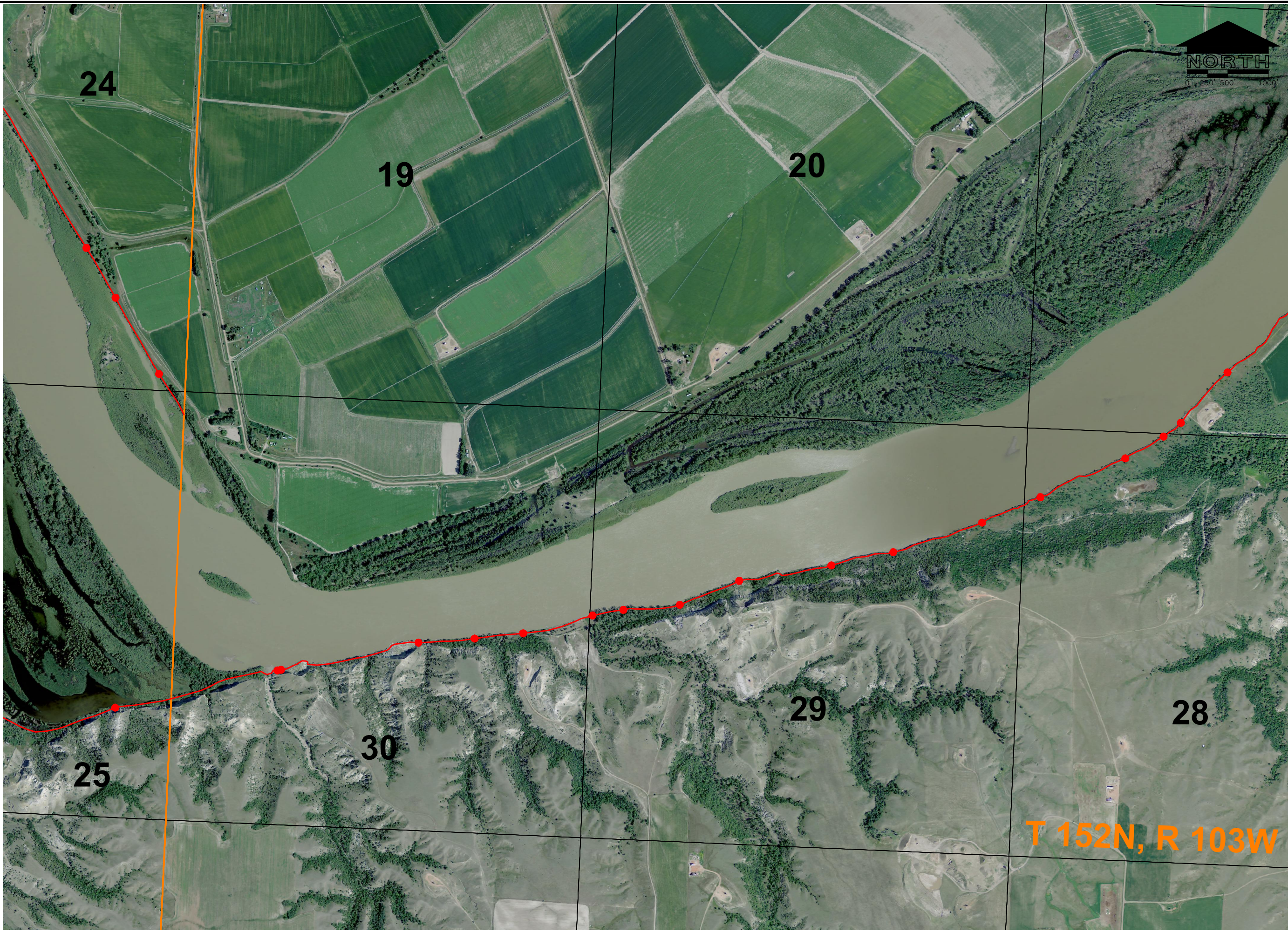
DESCRIPTION

REC. DATE

DISCLAIMER: THE WORK COMPLETED UNDER THIS CONTRACT WAS TO DELINEATE THE OHWM AND IS NOT A FINAL LEGAL DETERMINATION AS TO WHETHER ANY SPECIFIC PROPERTY IS SOVEREIGN LAND.

ALL RIGHTS RESERVED. ALL BARTLETT & WEST ENGINEERS PLANS, SPECIFICATIONS AND DRAWINGS ARE PROTECTED UNDER COPYRIGHT LAW, AND NO PART MAY BE COPIED, REPRODUCED, DISTRIBUTED, STORED IN A RETRIEVAL SYSTEM OR TRANSMITTED IN ANY FORM BY ANY MEANS WITHOUT PRIOR WRITTEN PERMISSION OF BARTLETT & WEST ENGINEERS.

Last edit on: Dec 05, 2005 by: DDM00439 Drawing name: F:\16000\16073 - OHWM Survey\16073.000\GIS-CAOD\16073.000 OHWM Final Project.dwg Layout name: 13 Plotted by: DDP01105 Plotted on: Nov 24, 2010 - 8:20am



DESIGNED BY:	JMR
DRAWN BY:	JMR
APPROVED BY:	JDL
DESIGN PROJ.:	16073.000
CONST PROJ.:	
SCALE:	1" = 500'
DATE:	11/10
SHEET NUMBER:	13
	13 of 26

**OHWM
MISSOURI RIVER**

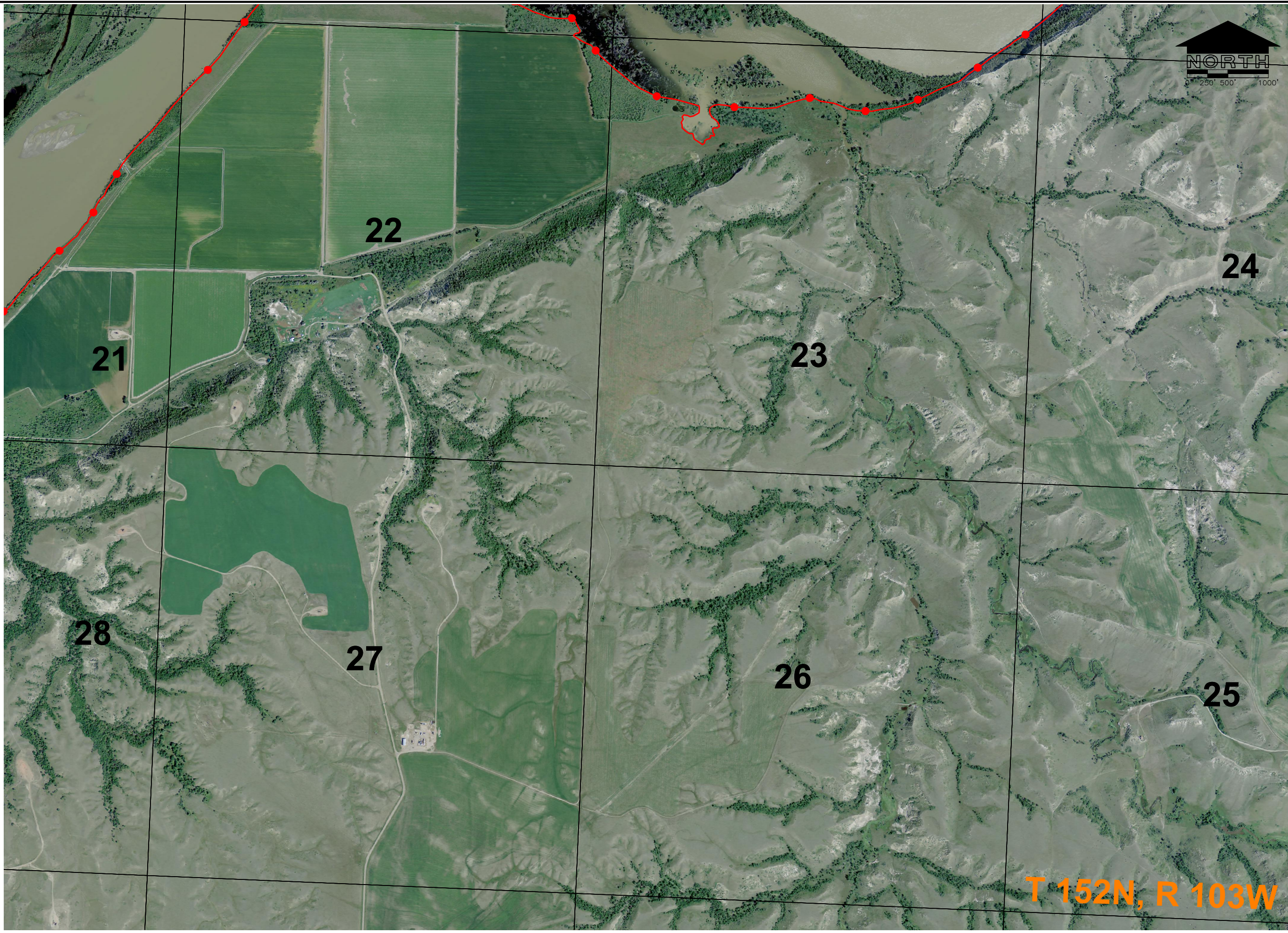
BARTLETT & WEST

**ND STATE LAND
DEPARTMENT**

DISCLAIMER: THE WORK COMPLETED UNDER THIS CONTRACT WAS TO DELINEATE THE OHWM AND IS NOT A FINAL LEGAL DETERMINATION AS TO WHETHER ANY SPECIFIC PROPERTY IS SOVEREIGN LAND.

ALL RIGHTS RESERVED. ALL BARTLETT & WEST ENGINEERS PLANS, SPECIFICATIONS AND DRAWINGS ARE PROTECTED UNDER COPYRIGHT LAW, AND NO PART MAY BE COPIED, REPRODUCED, DISPLAYED PUBLICLY, USED TO CREATE DERIVATIVES, DISTRIBUTED, STORED IN A RETRIEVAL SYSTEM OR TRANSMITTED IN ANY FORM BY ANY MEANS WITHOUT PRIOR WRITTEN PERMISSION OF BARTLETT & WEST ENGINEERS.

Last edit on: Dec 05, 2005 by: DDM00439 Drawing name: F:\16000\16073 - OHWM Survey\16073.000\GIS-CADD\16073.000 OHWM Final Project.dwg Layout name: 14 Plotted by: DDP01105 Plotted on: Nov 24, 2010 - 8:21am



T 152N, R 103W

DESIGNED BY:	JMR
DRAWN BY:	JMR
APPROVED BY:	JDL
DESIGN PROJ:	16073.000
CONST PROJ:	
SCALE:	1" = 500'
DATE:	11/10
SHEET NUMBER	14
	14 of 26

OHWM
MISSOURI RIVER

BARTLETT & WEST

ND STATE LAND DEPARTMENT

DESCRIPTION

REV. DATE

DISCLAIMER: THE WORK COMPLETED UNDER THIS CONTRACT WAS TO DELINEATE THE OHWM AND IS NOT A FINAL LEGAL DETERMINATION AS TO WHETHER ANY SPECIFIC PROPERTY IS SOVEREIGN LAND.

ALL RIGHTS RESERVED. ALL BARTLETT & WEST ENGINEERS PLANS, SPECIFICATIONS AND DRAWINGS ARE PROTECTED UNDER COPYRIGHT LAW, AND NO PART MAY BE COPIED, REPRODUCED, DISPLAYED PUBLICLY, USED TO CREATE DERIVATIVES, DISTRIBUTED, STORED IN A RETRIEVAL SYSTEM OR TRANSMITTED IN ANY FORM BY ANY MEANS WITHOUT PRIOR WRITTEN PERMISSION OF BARTLETT & WEST ENGINEERS.

Last edit on: Dec 05, 2005 by: DDM00439 Drawing name: F:\16000\16073 - OHWM Survey\16073.000\GIS-CADD\16073.000 OHWM Final Project.dwg Layout name: 15 Plotted by: DDP01105 Plotted on: Nov 24, 2010 - 8:21am



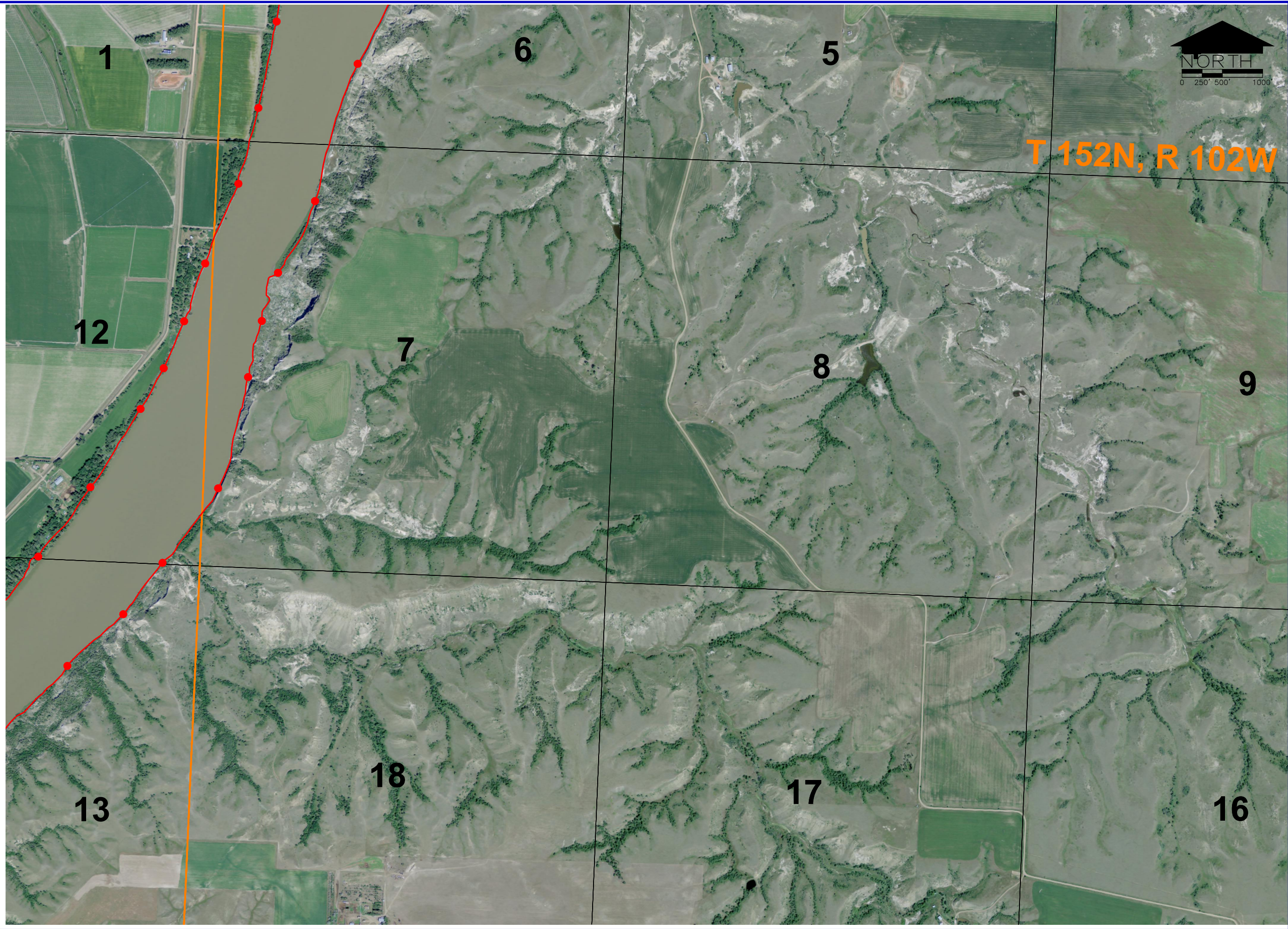
T 152N, R 103W



DESIGNED BY: JMR	  OHWM MISSOURI RIVER
DRAWN BY: JMR	
APPROVED BY: JDL	
DESIGN PROJ: 16073.000	
CONST PROJ:	
SCALE: 1" = 500'	SHEET NUMBER 15 15 of 26
DATE: 11/10	
<small>DISCLAIMER: THE WORK COMPLETED UNDER THIS CONTRACT WAS TO DELINEATE THE OHWM AND IS NOT A FINAL LEGAL DETERMINATION AS TO WHETHER ANY SPECIFIC PROPERTY IS SOVEREIGN LAND.</small>	

ALL RIGHTS RESERVED. ALL BARTLETT & WEST ENGINEERS PLANS, SPECIFICATIONS AND DRAWINGS ARE PROTECTED UNDER COPYRIGHT LAW, AND NO PART MAY BE COPIED, REPRODUCED, DISPLAYED PUBLICLY, USED TO CREATE DERIVATIVES, DISTRIBUTED, STORED IN A RETRIEVAL SYSTEM OR TRANSMITTED IN ANY FORM BY ANY MEANS WITHOUT PRIOR WRITTEN PERMISSION OF BARTLETT & WEST ENGINEERS.

Last edit on: Dec 05, 2005 by: DDM00439 Drawing name: C:\Users\jmr01000\AppData\Local\Temp\AcPublish_7152\16073.000 OHWM Final Project.dwg Layout name: 16 Plotted by: JMR01000 Plotted on: Dec 01, 2010 - 11:09am



T 152N, R 102W



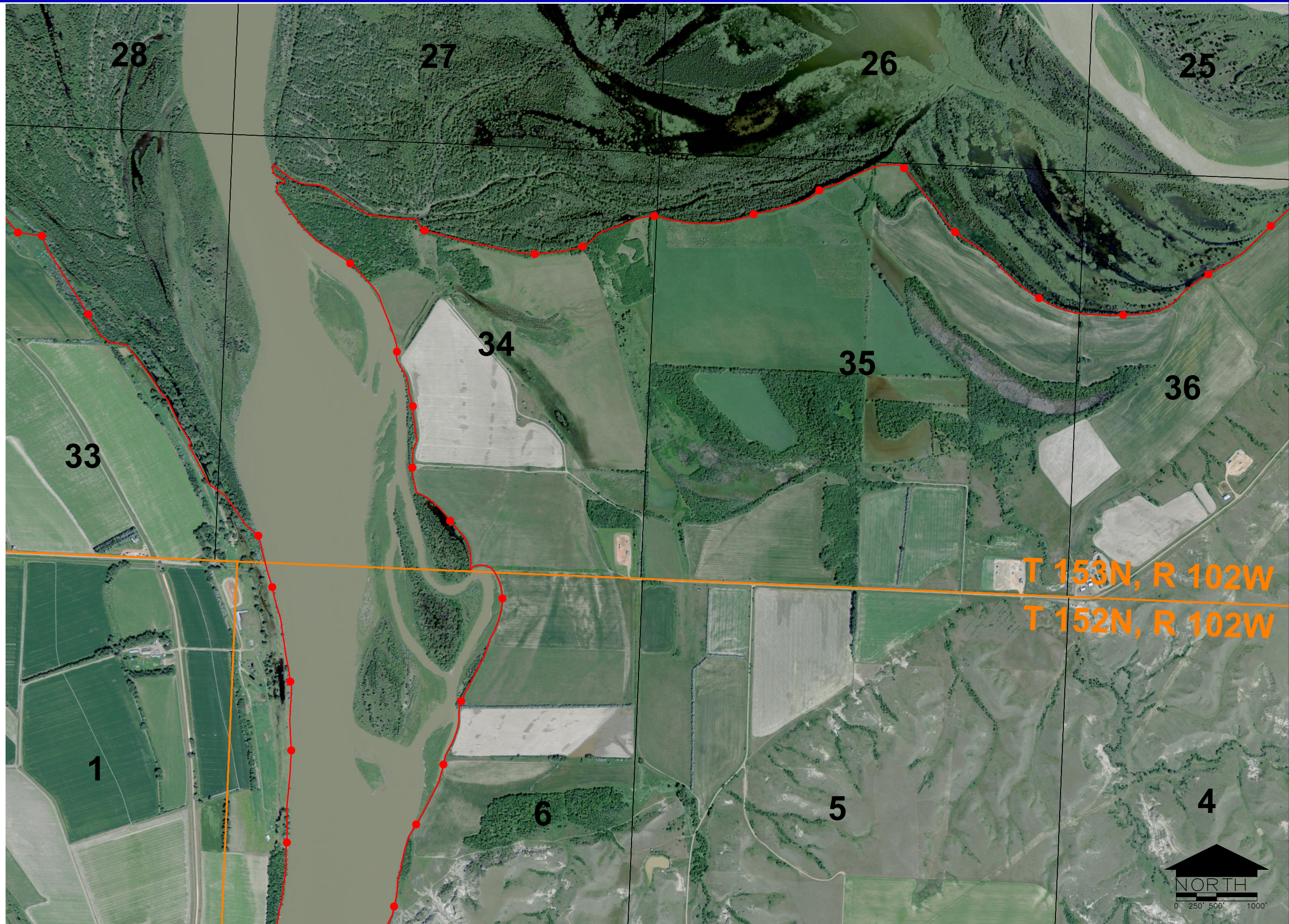
BARTLETT & WEST

OHWM
MISSOURI RIVER

DATE	JMR
BY	JMR
CHECKED BY	JDL
SCALE	16073.000
SCALE	1" = 500'
DATE	11/10

ALL RIGHTS RESERVED. ALL BARTLETT & WEST ENGINEERS PLANS, SPECIFICATIONS AND DRAWINGS ARE PROTECTED UNDER COPYRIGHT LAW, AND NO PART MAY BE COPIED, REPRODUCED, DISPLAYED PUBLICLY, USED TO CREATE DERIVATIVES, DISTRIBUTED, STORED IN A RETRIEVAL SYSTEM OR TRANSMITTED IN ANY FORM BY ANY MEANS WITHOUT PRIOR WRITTEN PERMISSION OF BARTLETT & WEST ENGINEERS.

Last edit on: Dec 05, 2005 by: DDM00439 Drawing name: C:\Users\jmr01000\AppData\Local\Temp\AcPublish_7152\16073.000 OHWM Final Project.dwg Layout name: 18 Plotted by: JMR01000 Plotted on: Dec 01, 2010 - 11:09am



T 153N, R 102W
T 152N, R 102W



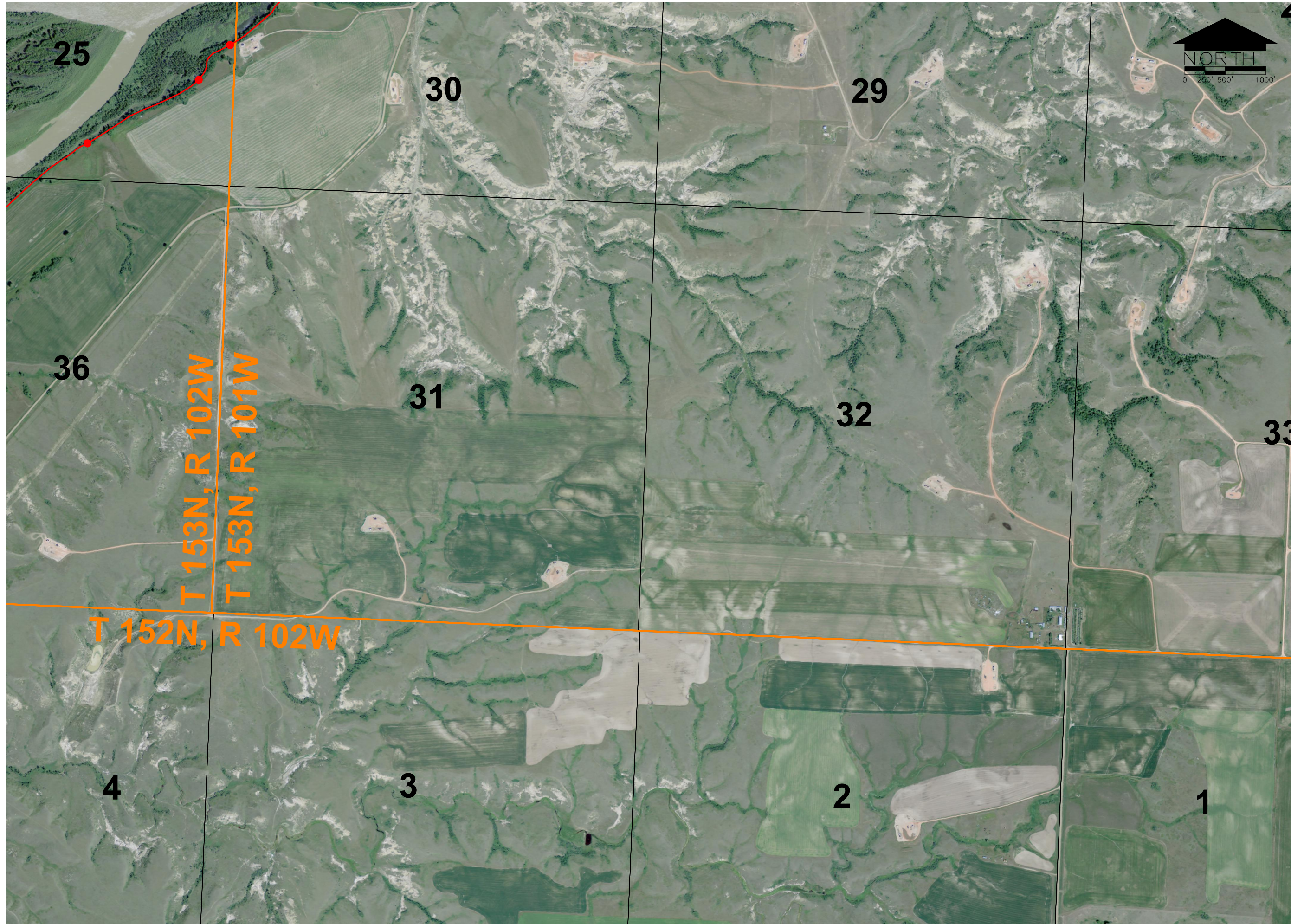
OHWM
MISSOURI RIVER

DATE	JMR
BY	JMR
CHECKED BY	JDL
SCALE	16073.000
SCALE	1" = 500'
DATE	11/10
NO.	18
TOTAL	26

DISCLAIMER: THE WORK COMPLETED UNDER THIS CONTRACT WAS TO DELINEATE THE OHWM AND IS NOT A FINAL LEGAL DETERMINATION AS TO WHETHER ANY SPECIFIC PROPERTY IS SOVEREIGN LAND.

ALL RIGHTS RESERVED. ALL BARTLETT & WEST ENGINEERS PLANS, SPECIFICATIONS AND DRAWINGS ARE PROTECTED UNDER COPYRIGHT LAW, AND NO PART MAY BE COPIED, REPRODUCED, DISPLAYED PUBLICLY, USED TO CREATE DERIVATIVES, DISTRIBUTED, STORED IN A RETRIEVAL SYSTEM OR TRANSMITTED IN ANY FORM BY ANY MEANS WITHOUT PRIOR WRITTEN PERMISSION OF BARTLETT & WEST ENGINEERS.

Last edit on: Dec 05, 2005 by: DDM00439 Drawing name: C:\Users\jmr01000\AppData\Local\Temp\AcPublish_7152\16073.000 OHWM Final Project.dwg Layout name: 19 Plotted by: JMR01000 Plotted on: Dec 01, 2010 - 11:10am



DATE	BY
11/10	JMR
DATE	BY
	JMR
DATE	BY
	JDL
SCALE	16073.000
SCALE	1" = 500'
DATE	11/10
NO.	19
	26

OHWM
MISSOURI RIVER

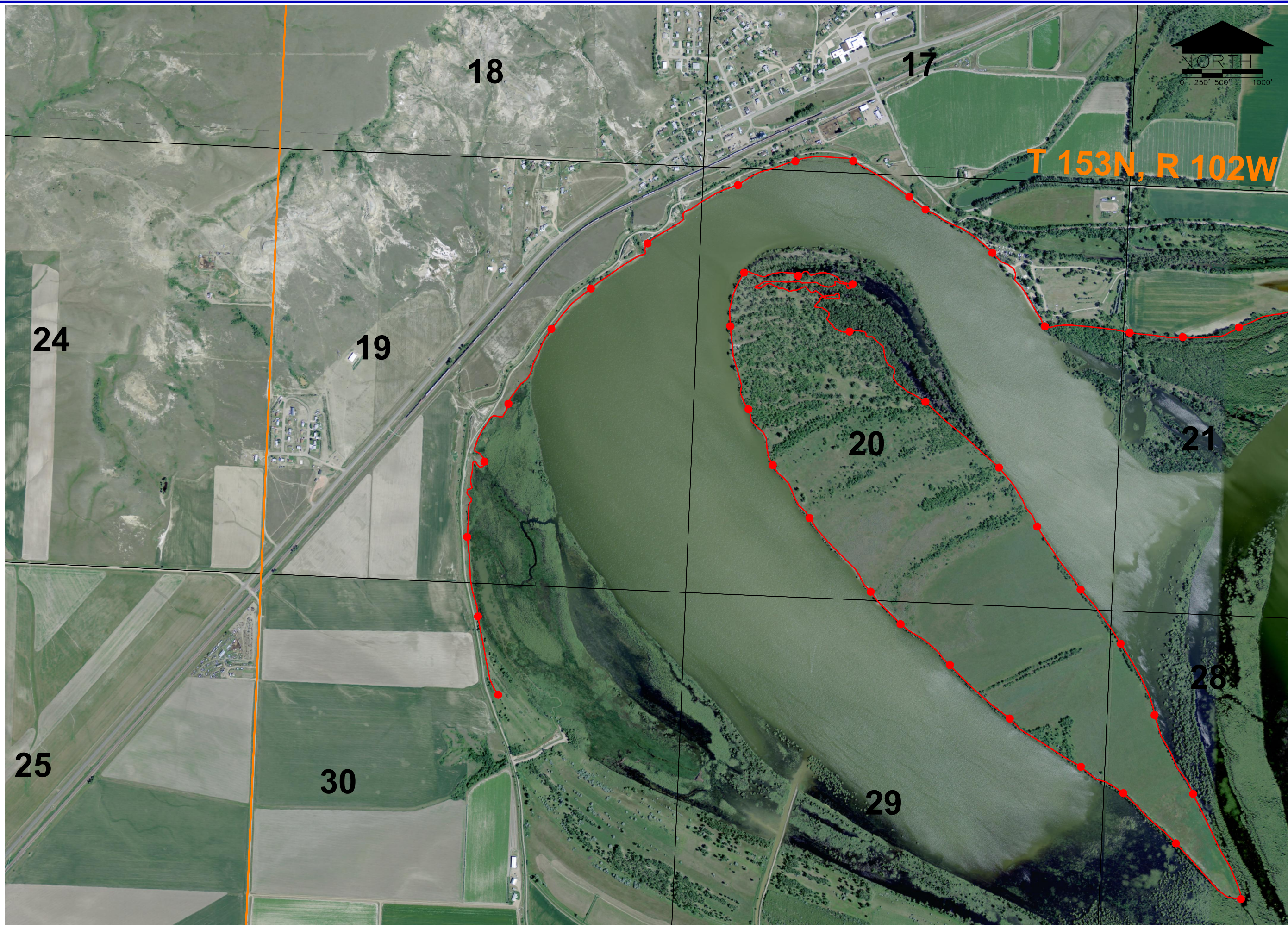
BARTLETT & WEST

ND STATE LAND
DEPARTMENT

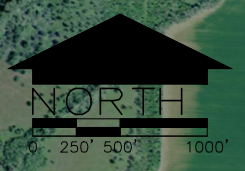
DISCLAIMER: THE WORK COMPLETED UNDER THIS CONTRACT WAS TO DELINEATE THE OHWM AND IS NOT A FINAL LEGAL DETERMINATION AS TO WHETHER ANY SPECIFIC PROPERTY IS SOVEREIGN LAND.

ALL RIGHTS RESERVED. ALL BARTLETT & WEST ENGINEERS PLANS, SPECIFICATIONS AND DRAWINGS ARE PROTECTED UNDER COPYRIGHT LAW, AND NO PART MAY BE COPIED, REPRODUCED, DISPLAYED PUBLICLY, USED TO CREATE DERIVATIVES, DISTRIBUTED, STORED IN A RETRIEVAL SYSTEM OR TRANSMITTED IN ANY FORM BY ANY MEANS WITHOUT PRIOR WRITTEN PERMISSION OF BARTLETT & WEST ENGINEERS.

Last edit on: Dec 05, 2005 by: DDM00439 Drawing name: C:\Users\jmr01000\appdata\local\temp\AcPublish_7152\16073.000 OHWM Final Project.dwg Layout name: 20 Plotted by: JMR01000 Plotted on: Dec 01, 2010 - 11:10am



T 153N, R 102W



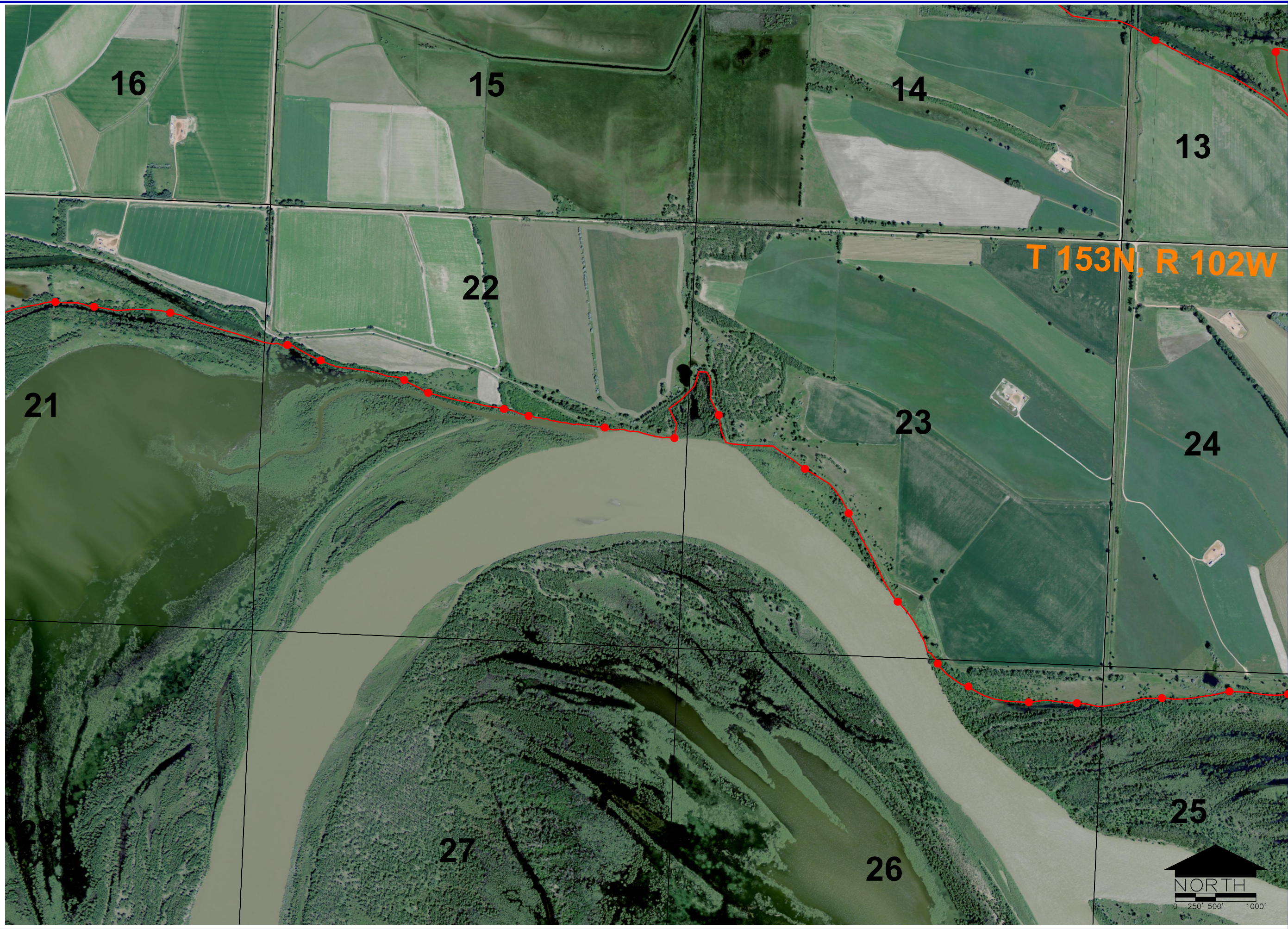
OHWM
MISSOURI RIVER

DATE	11/10
SCALE	1" = 500'
PROJECT NO.	16073.000
DRAWN BY	JDL
CHECKED BY	JMR
DESIGNED BY	JMR
DATE	20
NO.	26

DISCLAIMER: THE WORK COMPLETED UNDER THIS CONTRACT WAS TO DELINEATE THE OHWM AND IS NOT A FINAL LEGAL DETERMINATION AS TO WHETHER ANY SPECIFIC PROPERTY IS SOVEREIGN LAND.

ALL RIGHTS RESERVED. ALL BARTLETT & WEST ENGINEERS PLANS, SPECIFICATIONS AND DRAWINGS ARE PROTECTED UNDER COPYRIGHT LAW, AND NO PART MAY BE COPIED, REPRODUCED, DISPLAYED PUBLICLY, USED TO CREATE DERIVATIVES, DISTRIBUTED, STORED IN A RETRIEVAL SYSTEM OR TRANSMITTED IN ANY FORM BY ANY MEANS WITHOUT PRIOR WRITTEN PERMISSION OF BARTLETT & WEST ENGINEERS.

Last edit on: Dec 05, 2005 by: DDM00439 Drawing name: C:\Users\jmr01000\AppData\Local\Temp\AcPublish_7152\16073.000 OHWM Final Project.dwg Layout name: 21 Plotted by: JMR01000 Plotted on: Dec 01, 2010 - 11:10am



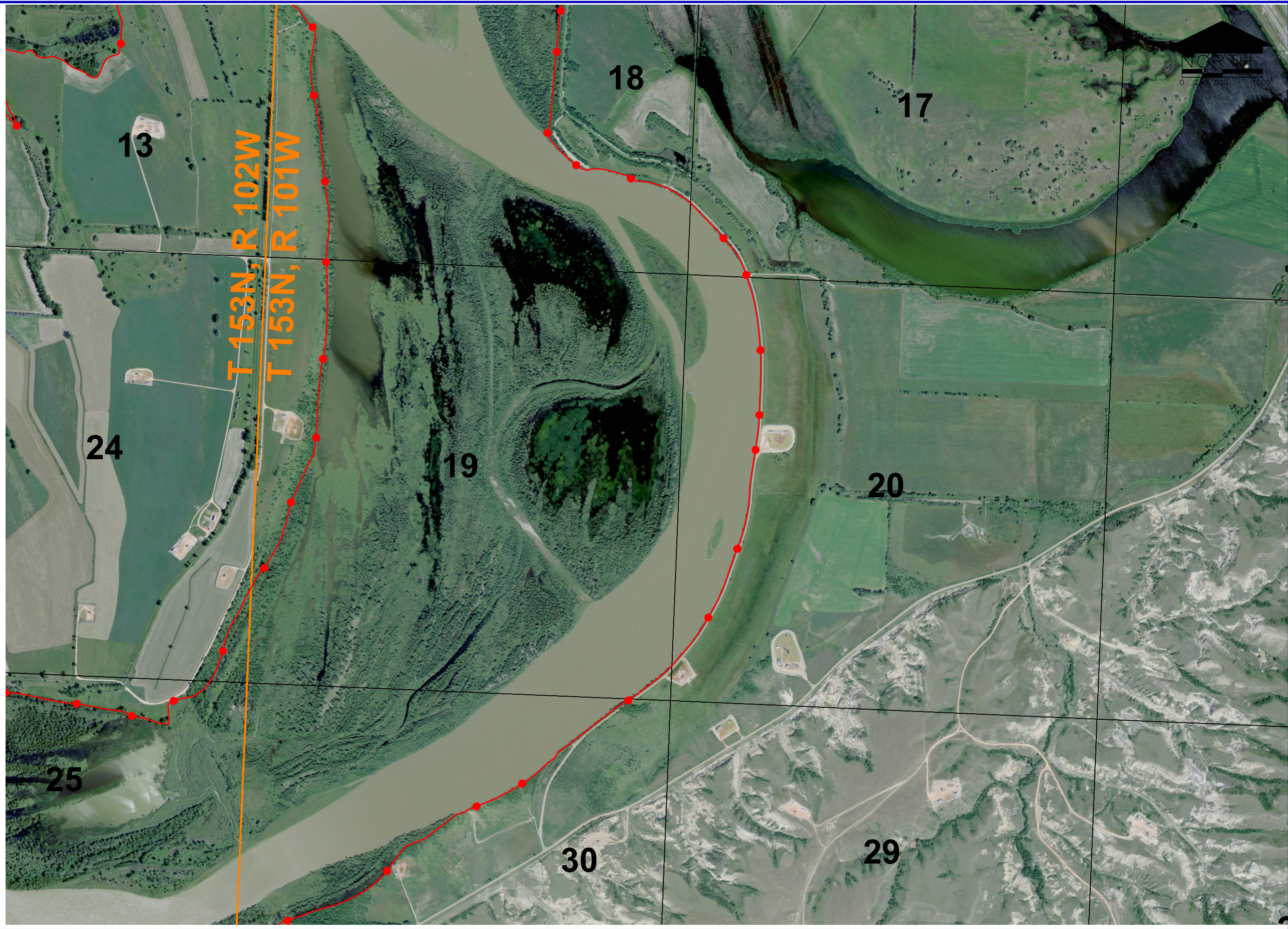
ND STATE LAND DEPARTMENT	
BARTLETT & WEST	
OHWM MISSOURI RIVER	
DATE	JMR
BY	JMR
CHECKED BY	JDL
SCALE	16073.000
SCALE	1" = 500'
DATE	11/10
SECTION	21
OF	26



DISCLAIMER: THE WORK COMPLETED UNDER THIS CONTRACT WAS TO DELINEATE THE OHWM AND IS NOT A FINAL LEGAL DETERMINATION AS TO WHETHER ANY SPECIFIC PROPERTY IS SOVEREIGN LAND.

ALL RIGHTS RESERVED. ALL BARTLETT & WEST ENGINEERS PLANS, SPECIFICATIONS AND DRAWINGS ARE PROTECTED UNDER COPYRIGHT LAW, AND NO PART MAY BE COPIED, REPRODUCED, DISPLAYED PUBLICLY, USED TO CREATE DERIVATIVES, DISTRIBUTED, STORED IN A RETRIEVAL SYSTEM OR TRANSMITTED IN ANY FORM BY ANY MEANS WITHOUT PRIOR WRITTEN PERMISSION OF BARTLETT & WEST ENGINEERS.

Last edit: on: Dec 05, 2005 by: DDM00439 Drawing name: C:\Users\jmr01000\AppData\Local\Temp\AcPublish_7152\16073.000 OHWM Final Project.dwg Layout name: 22 Plotted by: JMR01000 Plotted on: Dec 01, 2010 - 11:10am

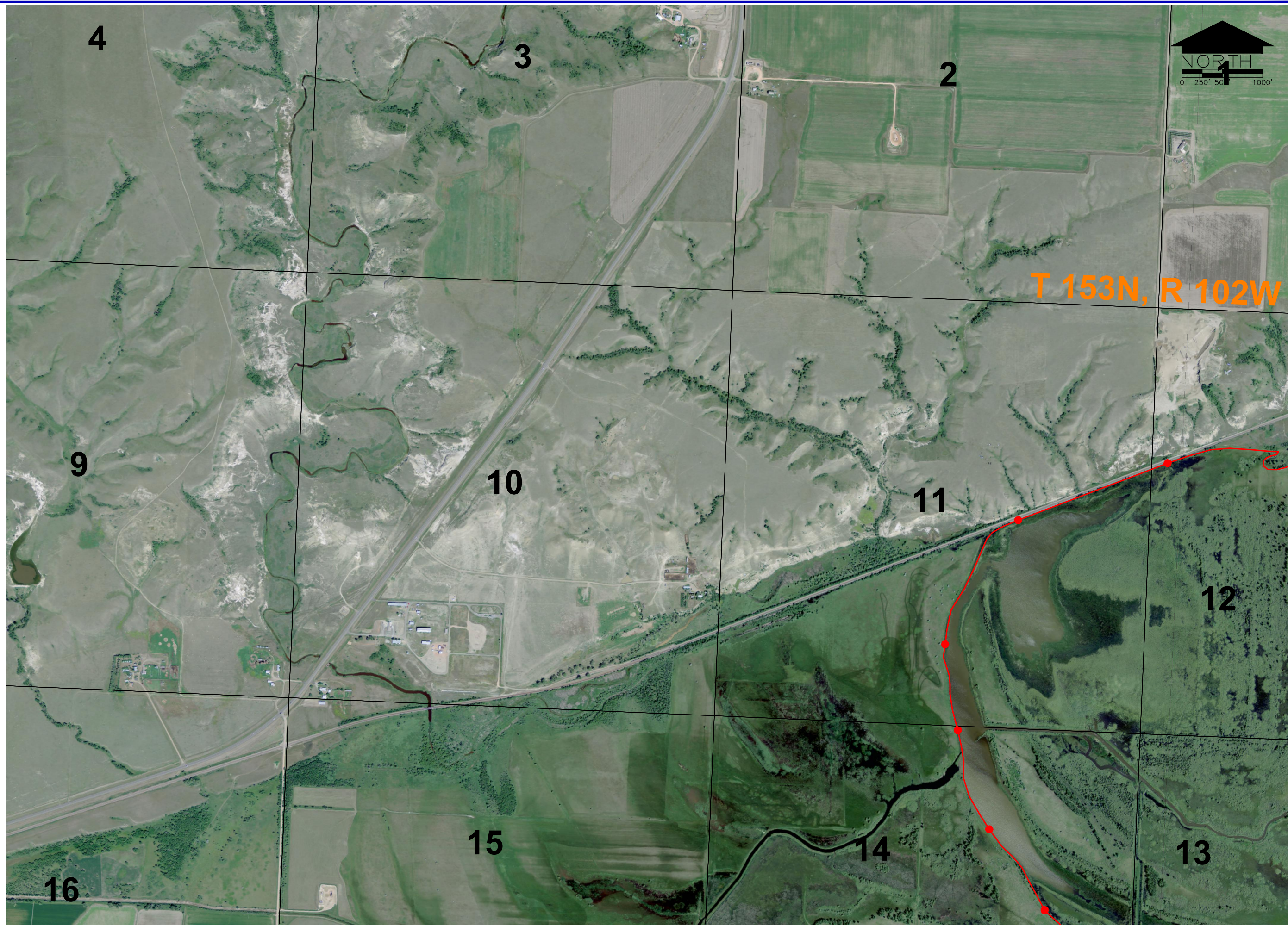


BARTLETT & WEST	
OHWM MISSOURI RIVER	
Date: 11/10	Drawn by: JMR
Scale: 1" = 500'	Project No: 16073.000
22	
22 of 26	

DISCLAIMER: THE WORK COMPLETED UNDER THIS CONTRACT WAS TO DELINEATE THE OHWM AND IS NOT A FINAL LEGAL DETERMINATION AS TO WHETHER ANY SPECIFIC PROPERTY IS SOVEREIGN LAND.

ALL RIGHTS RESERVED. ALL BARTLETT & WEST ENGINEERS PLANS, SPECIFICATIONS AND DRAWINGS ARE PROTECTED UNDER COPYRIGHT LAW, AND NO PART MAY BE COPIED, REPRODUCED, DISPLAYED PUBLICLY, USED TO CREATE DERIVATIVES, DISTRIBUTED, STORED IN A RETRIEVAL SYSTEM OR TRANSMITTED IN ANY FORM BY ANY MEANS WITHOUT PRIOR WRITTEN PERMISSION OF BARTLETT & WEST ENGINEERS.

Last edit on: Dec 05, 2005 by: DDM00439 Drawing name: C:\Users\jmr01000\appdata\local\temp\AcPublish_7152\16073.000 OHWM Final Project.dwg Layout name: 23 Plotted by: JMR01000 Plotted on: Dec 01, 2010 - 11:10am

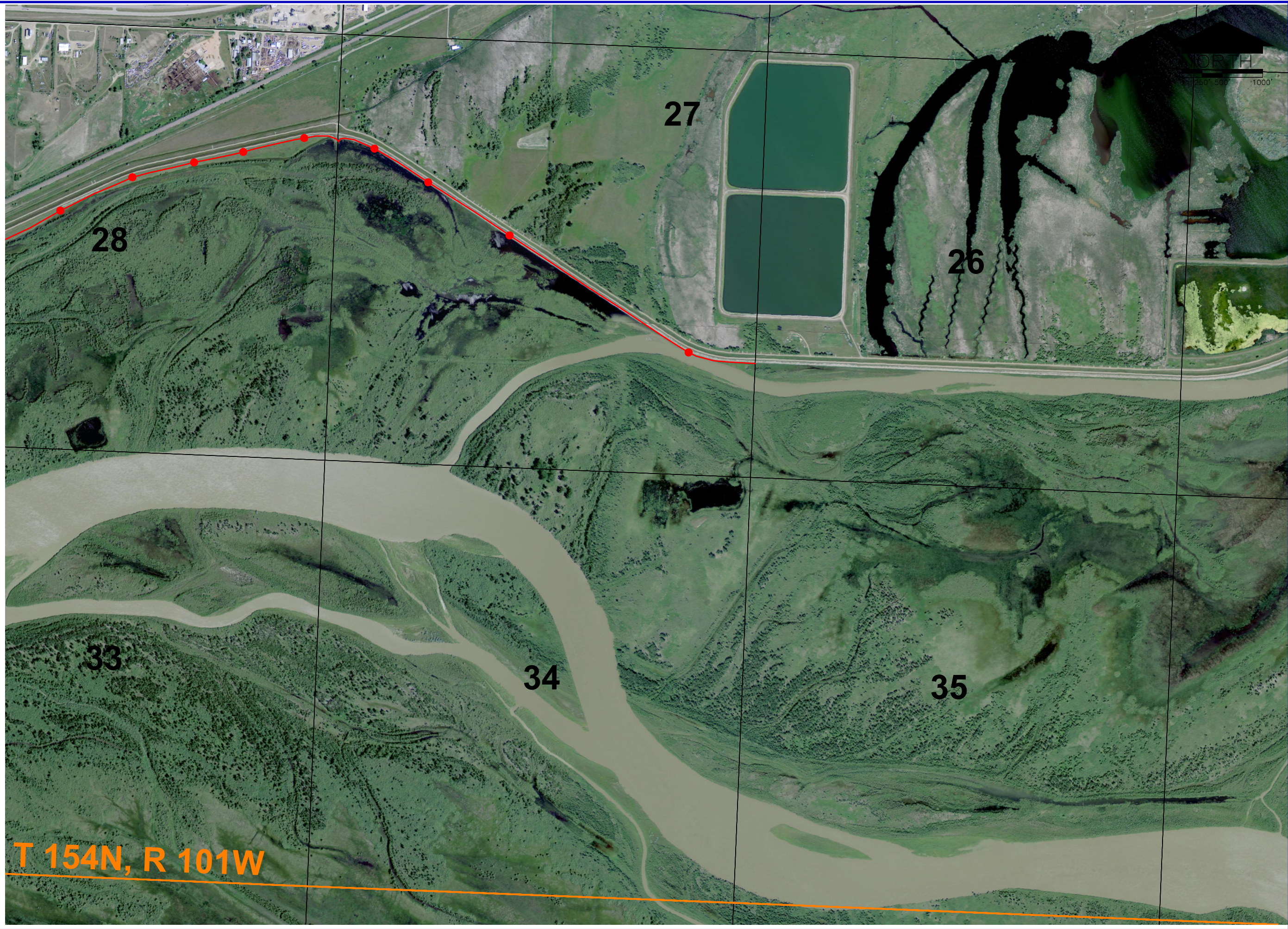


ND STATE LAND DEPARTMENT	
BARTLETT & WEST	
OHWM MISSOURI RIVER	
DATE	JMR
DESIGNED BY	JMR
DRAWN BY	JDL
SCALE	16073.000
SCALE	1" = 500'
DATE	11/10
23	26

DISCLAIMER: THE WORK COMPLETED UNDER THIS CONTRACT WAS TO DELINEATE THE OHWM AND IS NOT A FINAL LEGAL DETERMINATION AS TO WHETHER ANY SPECIFIC PROPERTY IS SOVEREIGN LAND.

ALL RIGHTS RESERVED. ALL BARTLETT & WEST ENGINEERS PLANS, SPECIFICATIONS AND DRAWINGS ARE PROTECTED UNDER COPYRIGHT LAW, AND NO PART MAY BE COPIED, REPRODUCED, DISPLAYED PUBLICLY, USED TO CREATE DERIVATIVES, DISTRIBUTED, STORED IN A RETRIEVAL SYSTEM OR TRANSMITTED IN ANY FORM BY ANY MEANS WITHOUT PRIOR WRITTEN PERMISSION OF BARTLETT & WEST ENGINEERS.

Last edit on: Dec 05, 2005 by: DDM00439 Drawing name: C:\Users\jmr01000\AppData\Local\Temp\AcPublish_7152\16073.000\OHWM Final Project.dwg Layout name: 26 Plotted by: JMR01000 Plotted on: Dec 01, 2010 - 11:11am



T 154N, R 101W

OHWM MISSOURI RIVER	
DRAWN BY: JMR CHECKED BY: JMR DATE: JDL SCALE: 16073.000 SCALE: 1" = 500' DATE: 11/10	26 26 of 26

ALL RIGHTS RESERVED. ALL BARTLETT & WEST ENGINEERS PLANS, SPECIFICATIONS AND DRAWINGS ARE PROTECTED UNDER COPYRIGHT LAW, AND NO PART MAY BE COPIED, REPRODUCED, DISPLAYED PUBLICLY, USED TO CREATE DERIVATIVES, DISTRIBUTED, STORED IN A RETRIEVAL SYSTEM OR TRANSMITTED IN ANY FORM BY ANY MEANS WITHOUT PRIOR WRITTEN PERMISSION OF BARTLETT & WEST ENGINEERS.